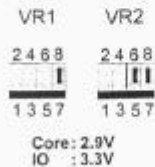
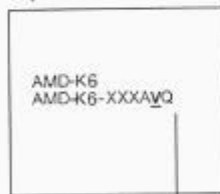


**To : Users of Manual PA-2005 (for Ver. Ax)**  
 (Part No. : 25-10493-28)

The mainboards now support AMD-K6, Cyrix MX, and IBM MX series processors. Their voltages are 2.9V. The corresponding jumper settings are listed as below:



**AMD-K6 CPU  
 Top Side Marking**



V (Identifier for Operation Voltage) :  
 N 3.1-3.3V Core/3.135-3.6V I/O  
 L 2.755-3.045V Core/3.135-3.6V I/O

**AMD-K6 Series**

Model	CPU Speed	External (CPU/CLK)	CLK1	CLK2	CPU Clock Rate		
					Internal	FREQ1	FREQ2
K6-200	200 MHz	66 MHz	1- 1	1- 1	3x	1- 1	1- 1
K6-166	166 MHz	66 MHz	1- 1	1- 1	2.5x	1- 1	1- 1

**Cyrix/IBM 6x86MX Series**

Model	CPU Speed	External (CPU/CLK)	CLK1	CLK2	CPU Clock Rate		
					Internal	FREQ1	FREQ2
6x86MX-PR200*	166 MHz	66 MHz	1- 1	1- 1	2.5x	1- 1	1- 1
6x86MX-PR166	150 MHz	60 MHz	1- 1	1- 1	2.5x	1- 1	1- 1

\* : This CPU had not been tested when this page was printed.