

Replacing the Gateway M320 Keyboard

This package includes a replacement keyboard for your Gateway M320 notebook and these printed instructions.

Tools you need

You need a small Phillips and a small flat-blade screwdriver to replace the keyboard.

Preventing static electricity discharge

The components inside your notebook are extremely sensitive to static electricity, also known as *electrostatic discharge* (ESD).

Warning



To avoid exposure to dangerous electrical voltages and moving parts, turn off your notebook and unplug the power cord, the modem cable, and the network cable before opening the case.

Caution



ESD can permanently damage electrostatic discharge-sensitive components in your notebook. Prevent ESD damage by following ESD guidelines every time you replace the keyboard.

Before replacing the keyboard, follow these guidelines:

- Turn off your notebook.
- Wear a grounding wrist strap (available at most electronics stores) and attach it to a bare metal part of your workbench or other grounded connection.

Warning



To prevent risk of electric shock, do not insert any object into the vent holes of your notebook.

- Touch a bare metal surface on your workbench or other grounded object.
- Unplug the power cord, the modem cable, and the network cable.
- Remove the battery. For more information, see “Changing batteries” in your user guide.
- Disconnect all peripheral devices and remove any PC Cards.

Before working with notebook components, follow these guidelines:

- Avoid static-causing surfaces such as carpeted floors, plastic, and packing foam.
- Remove components from their antistatic bags only when you are ready to use them. Do not lay components on the outside of antistatic bags because only the inside of the bags provide electrostatic protection.
- Always hold components by their edges. Avoid touching the edge connectors. Never slide components over any surface.

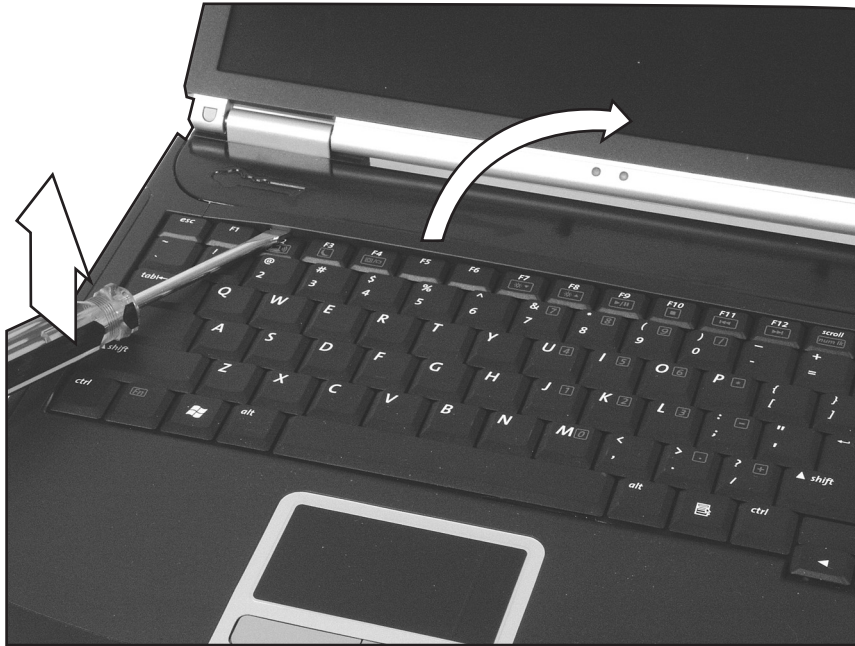
Removing the keyboard



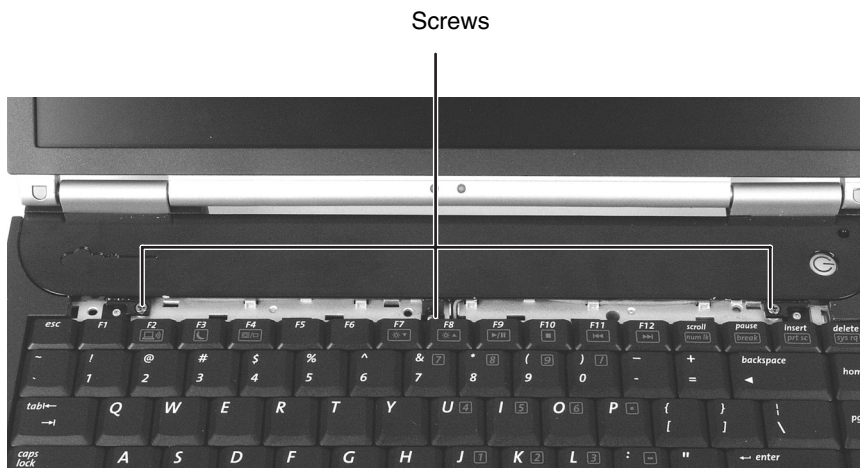
To remove the keyboard:

- 1 Follow the instructions under [“Preventing static electricity discharge”](#) on page 1.
- 2 Turn off your notebook.
- 3 Disconnect the AC adapter and modem and network cables.
- 4 Turn your notebook over so the bottom is facing up.
- 5 Remove the battery. For instructions, see [“Changing batteries”](#) in your user guide.
- 6 Turn your notebook over so the top is facing up, then open the LCD panel.

- 7** Find the plastic strip located between the keyboard and the keyboard bezel. Insert the small flat-blade screwdriver under the bottom of the strip near the F2 key and gently pry it up.

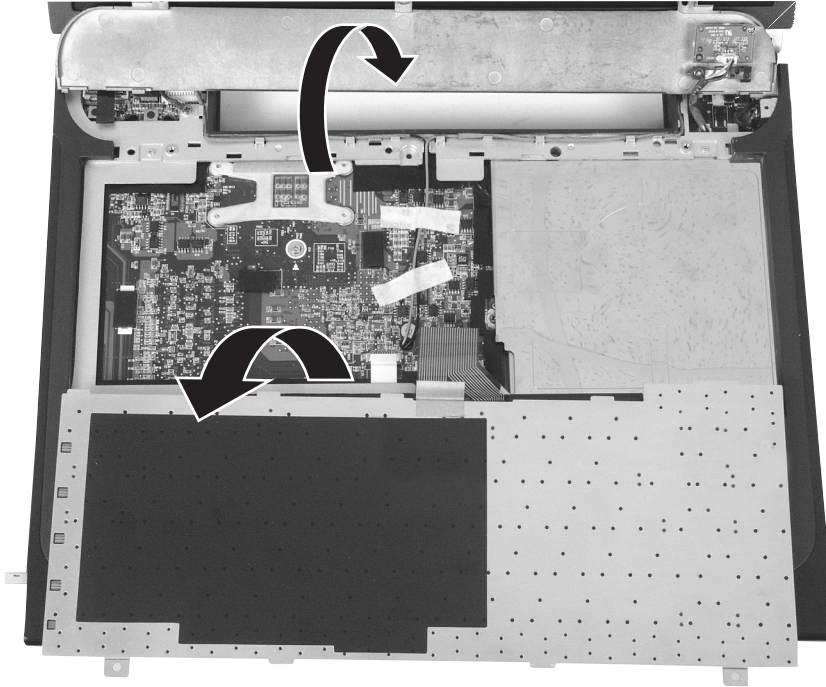


- 8** With a small Phillips screwdriver, remove the three keyboard bezel screws and put them in a safe place.

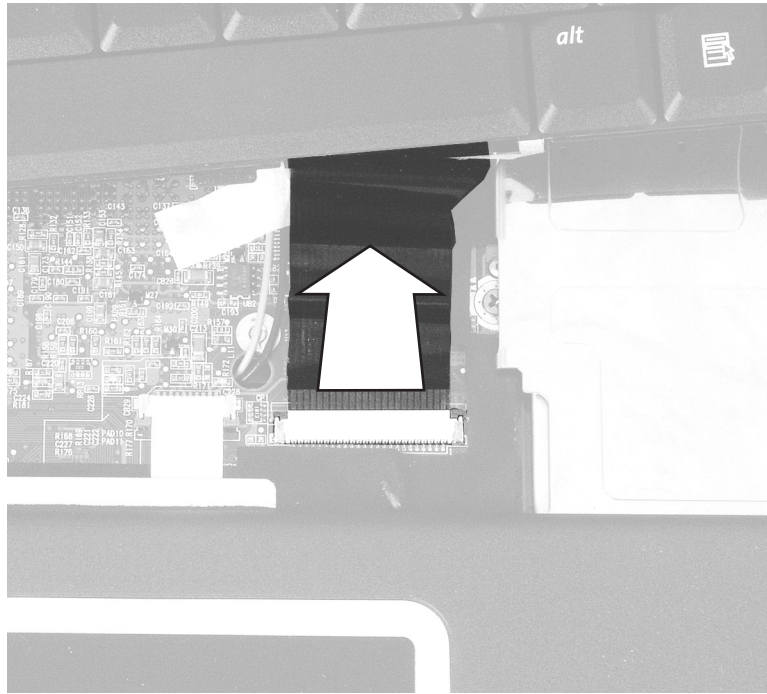


- 9** Open the LCD panel to the fully opened position so it lies flat on your workbench.

- 10 Lift the front edge of the keyboard bezel, then rotate it away from you so it lies face-down on top of the LCD panel. Be careful not to damage the LCD panel.
- 11 Lift the back edge of the keyboard slightly, then slowly push it toward the LCD panel to release the keyboard retaining tabs.
- 12 Slowly rotate the keyboard toward you so it lies **keys-down** on top of your notebook. Be careful not to damage the LCD panel.



- 13 Lift the brown keyboard connector latch to unlock the keyboard connector.
- 14 Lift the keyboard connector and remove the keyboard cable. Be careful not to touch or damage any other components.



Installing the keyboard



To install the keyboard:

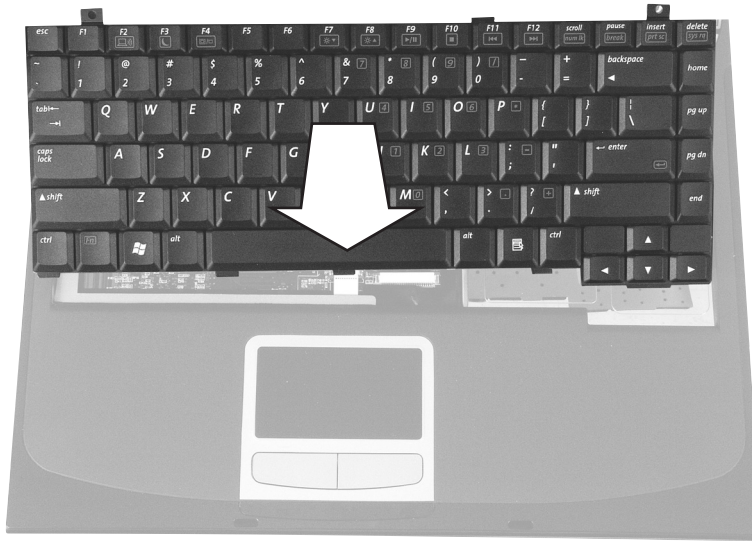
- 1 Place the new keyboard **keys-down** on your notebook with the space bar away from you.
- 2 Insert the keyboard plug, on the end of the keyboard cable, onto the keyboard connector, then press down on the brown keyboard connector latch to lock the keyboard connector in place.

Important



The plug is correctly oriented if the cable is not twisted.

- 3 Rotate the keyboard toward the LCD panel until the keyboard is almost face-up.
- 4 Insert the tabs on the front edge of the keyboard into the slot under the palm rest. It may be necessary to press down on the keyboard keys along the front edge of the keyboard to seat the retaining tabs into their corresponding slots.



- 5 Gently press the keyboard down until it is flat all the way across. The keyboard should easily fall into place. Be careful not to damage the LCD panel.
- 6 Replace the keyboard bezel. Press down on the bezel in several places until it clicks in place.
- 7 Replace the three keyboard bezel screws.
- 8 Replace the plastic keyboard strip. Press down on the strip in several places until it clicks in place. The strip is correctly mounted when you can run your finger along the strip and find no loose spots. The strip should be flat all the way across.

Caution



If the strip is not correctly replaced, your notebook could be damaged when you try to close the LCD panel.

- 9 Close the LCD panel, then turn your notebook over so the bottom is facing up.
- 10 Install the battery.
- 11 Connect the power adapter, the modem cable, and the network cable, then turn on your notebook.



Technical Support

See your user guide for Gateway Technical Support information.

Safety, Regulatory, and Legal Information

See your user guide for important safety, regulatory, and legal information.

© 2004 Gateway, Inc. All rights reserved. Gateway, Gateway Country, the Gateway stylized logo, and the black-and-white spot design are trademarks or registered trademarks of Gateway, Inc. in the United States and other countries. All other brands and product names are trademarks or registered trademarks of their respective companies.



MAN STM RPL KBD INST GDE R0 7/04

