

Addendum to UM88 10P-AIO User's Manual Version 1.0-N. 1

The **description** of DX4 on page 1, the **jumper settings** for Cache Size on page 8, the **Fixed Disk Setup screen 1 & 2** on page 26, and the **Integrated Peripherals screen** information on page 28 of the UM8810P-AIO version 1.1 User's Manual have been modified

The modification are related to *the addition of description for DX4, the function categories* under CPU size jumper settings, *the change or addition of, the "IDE Adapter O/I Master", the "IDE Adapter O/I Slave", "the 32 Bit I/O", and "the LPT mode" & "CMD IDE Mode 3 Feature"* options within the Fixed Disk Setup screen 1/2 & Integrated Peripherals screen respectively. Please refer to the following for a detailed description of the changes implemented.

★DX4 is only supported on the version of motherboard that has the 3.3V regulator. (Please verify before plugging any 3.3V CPU).

Function		Jumper Settings
Cache Size	512KB- with 64Kx8	JP13 open JP14 short 2-3 JP16 short 1-2 JP33 short JP35 short

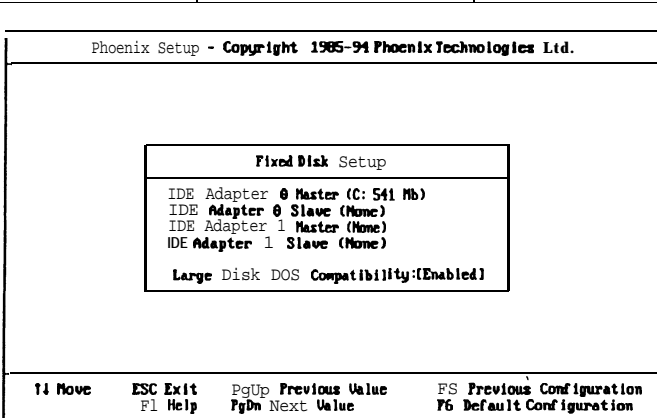


Figure 4-3. Fixed Disk Setup Screen 1

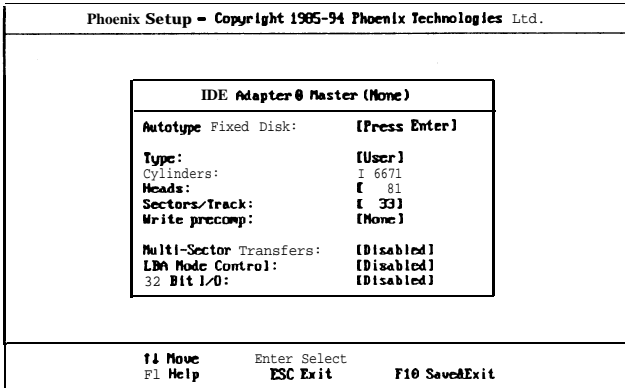


Figure 4-4. Fixed Disk Setup Screen 2

32 bit I/O - it is only for PCI IDE card, if you want to use the ISA IDE card, you have to disable it.

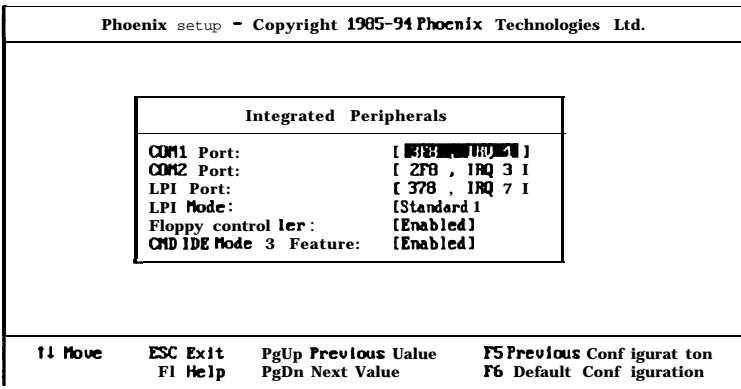


Figure 4-6. Integrated Peripherals Screen

CMD IDE Mode 3 Feature - enables 32 Bit I/O and CMD IDE Mode 3 Feature to support CMD DOS driver.