

EN-7180

# USER MANUAL



# Series EN-7180

**\*\*\*Important**-First please check your model number before proceeding. The user manual is set up to correspond to the model number and installation will vary depending on the model.

**Required tools:** Phillips head screwdriver, pliers

*\*\*\*(Photos shown may vary according to different model number)*

## Step 1. Remove front bezel

Place case on edge of table (Fig.1).  
With 1 hand holding top of chassis, pull quickly from the bottom of the bezel to remove it (Fig. 2).

**\*\*Note**-It might require some force to remove due to the snug fit to the chassis.

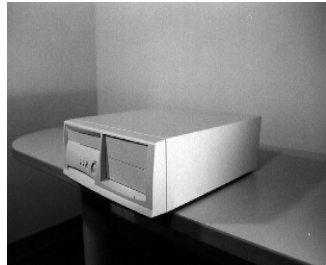


Fig:1

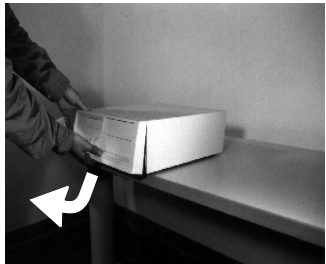


Fig:2

## Step 2. Remove top cover

Remove screws. Place hands on sides of top cover, and thumbs firmly on chassis. Slide top cover towards you 1". Spread sides and lift straight up to remove (Fig. 3).



Fig:3



Fig:4

### Step 3. Install fan and speaker

Install fan using countersink screws and place fan in housing (Fig. 4). Connect fan and speaker wiring to M/B as instructed in M/B user manual (After M/B is installed!).

### Step 4. Install FDD, HDD, CD-ROM, 5.25" FDD, DVD



Fig:5

#### Install 3.5" HDD and FDD (floppy)

**A.** Squeeze tab on top and remove 3.5in. drive cassette (Fig.5). Slide HDD into bottom of cassette and fasten with coarse thread flat head screws. Slide floppy into the top of the same cassette and fasten with fine thread flat head screws.

**B.** Then slide cassette back in to drive bay and snap in to place.



Fig:6

#### Install CD-ROM, (DVD or 5.25" FDD)

**A.** Fasten slide guides to the side of CD-ROM (DVD or 5.25" FDD) Using fine thread flat head screws (Fig. 6).

**B.** Slide CD-ROM in to 5.25" bay and snap in to place (Fig 7).

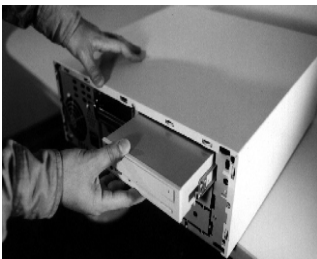


Fig:7

## Step 5. Install motherboard (M/B)

- A. Identify if M/B is ATX or microATX.
- B. Remove center bar to allow easy access to electronic bay (Fig 8).
- C. Make sure punch out holes for I/O ports on the I/O plate are punched out matching ports on the M/B.
- D. Install at an angle, first by lining up the I/O Ports on the M/B with I/O plate (Fig 9).
- E. Once holes are lined up, set M/B on standoffs, make sure the M/B is seated properly and fasten M/B using hex head screws.  
(M/B mounting screw holes will vary with manufacturer. Please refer to M/B user manual for more details.)
- F. Connect wires as directed in M/B user manual.
- G. Reinstall center bar.

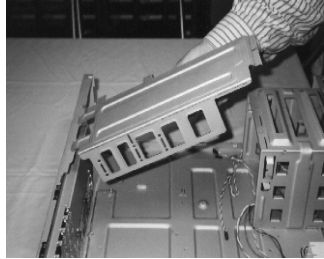


Fig:8

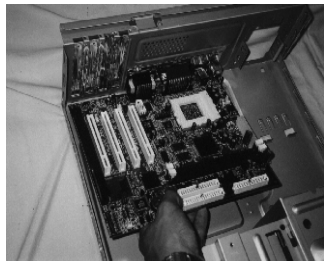


Fig:9

## Step 6. Install the power supply (P/S)

Slide in to P/S area and fasten with hex head screws (Fig 10). Connect wires as directed in M/B manual.



Fig:10



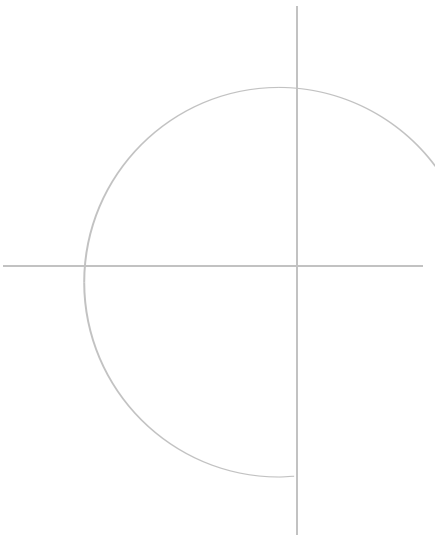
Fig:11

## Step 7. Reinstall top cover

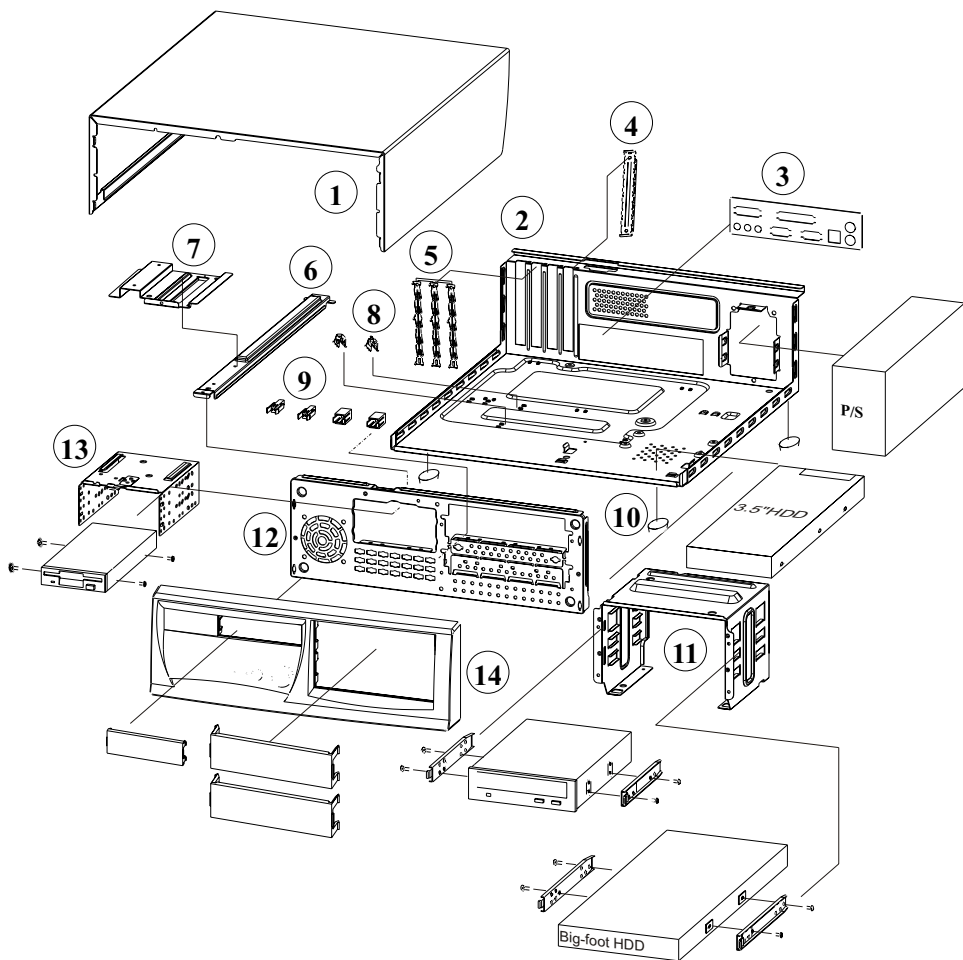
- A.** Orient top cover and spread sides.  
Slide vertically down and make sure slide fastener guides are properly set in the rails (Fig11). once top cover is set properly on the rails, slide away from you to close the top Cover.
- B.** Use Hex Head screws to fasten top Cover.

## Step 8. Reinstall front bezel

Line up snaps with holes on chassis and snap into place starting with top snaps.



# Schematic



## Part List

EN-7180	SERIES	P/N:3635047
NO	P/N	PART NAME
1	3221138	COVER
2	3221127	CHASSIS
3	5208455	I/O PLATE
4	3214577	ADAPTER PLATE
5	3220443	ADAPTER EMI-SPRING
6	3221149	LINK
7	3221162	3.5" HDD BRACKET SUPPORT
8	3214566	M/B STAKE-1(SCREWED)
9	3408384	LED HOLDER
10	3132574	RUBBER FOOT
11	3221151	5.25" BRACKET
12	3221116	CHASSIS FRONT
13	5206983	3.5" HDD BRACKET
14	5107387	BEZEL
<i>ACCESSORY PARTS LIST</i>		
NO	P/N	PART NAME
A	5208012	SLIDE GUIDE
B	3214566	M/B STAKE-1(SCREWED)
C	3214602	M/B STAKE-2(HOOKED)
D	3500851	SCREW-PAN HEAD #6-32*5
E	3501171	SCREW-HEX HEAD #6-32
F	3501592	SCREW-PAN HEAD M3*5
G	3602055	POLYBAG 8*12
H	3602102	INNER BOX
I	3214054	I/O PLATE