

# Intel<sup>®</sup> Boot Agent

*User's Guide*

*February 2000*

# Where to go for more information

## Readme Files

For more information about installation topics and product errata, see the readme text files. To view the files, open the README.TXT file with any text editor.

## Online Services

You can use the Internet to download software updates, troubleshooting tips, installation notes, and more. Online services are on the World Wide Web at:

*<http://support.intel.com>*

This Intel® Boot Agent User's Guide as well as the software described in it is furnished under license and may only be used or copied in accordance with the terms of the license. The information in this manual is furnished for informational use only, is subject to change without notice, and should not be construed as a commitment by Intel Corporation. Intel Corporation assumes no responsibility or liability for any errors or inaccuracies that may appear in this document or any software that may be provided in association with this document.

Except as permitted by such license, no part of this document may be reproduced, stored in a retrieval system, or transmitted in any form or by any means without the express written consent of Intel Corporation.

Copyright © 2000, Intel Corporation. All rights reserved.

Intel Corporation, 5200 N.E. Elam Young Parkway, Hillsboro, OR 97124-6497

Intel Corporation assumes no responsibility for errors or omissions in this document. Nor does Intel make any commitment to update the information contained herein.

\* Other product and corporate names may be trademarks of other companies and are used only for explanation and to the owners' benefit, without intent to infringe.

A13716-01

# Contents

Introduction . . . . .	1
Product Contents . . . . .	1
Operating Environment . . . . .	2
Boot Services . . . . .	2
Client Computer Hardware Installation . . . . .	3
Setup for a Known Configuration . . . . .	3
Identifying the Client Computer Configuration . . . . .	5
Flash ROM and Intel WfM-Compatible Adapters . . . . .	6
Installing Flash ROM Upgrades . . . . .	7
Installing the Boot Agent Software Image . . . . .	9
Installing/Updating in DOS Environment . . . . .	9
Updating in Windows Environments Using PROSet II . . . . .	12
Server System Setup . . . . .	15
Windows* 2000 RIS Server Setup . . . . .	15
Linux* Server Setup . . . . .	15
Other Server Setup Information . . . . .	16
Configuration Setup . . . . .	18
Configuring the Boot Agent in a Pre-Boot Environment . . . . .	18
Configuring the Boot Agent in a Windows Environment . . . . .	21
Auxiliary DOS Utilities . . . . .	25
fboot Utility . . . . .	25
BROW Utility . . . . .	28
Running BROW . . . . .	28
Examples . . . . .	29
Boot Agent Messages . . . . .	30
Information Messages . . . . .	30
Adapter-Related Error Messages . . . . .	30
System-Level Error Messages . . . . .	30
Troubleshooting Procedures . . . . .	32
Glossary . . . . .	34
Licensing and Support . . . . .	35
Network Software License Agreement . . . . .	35
Year 2000 Statement . . . . .	36
Intel® Automated Customer Support . . . . .	37
Web and Internet Sites . . . . .	37
Customer Support Technicians . . . . .	37



# Introduction

The Intel® Boot Agent is a software product that allows your networked client computer to boot start using a program code image supplied by a remote server. The features offered by this product are:

- Compliant with the Wired for Management Baseline 2.0 (WfM 2.0) specification
- Incorporates the software defined in the Pre-boot eXecution Environment (PXE) version 2.0 and 2.1 specifications
- Some versions of the Boot Agent also include support for Remote Program Load (RPL) runtime and loader software (10/100 adapters only)
- Compatible with legacy boot agent environments that use BOOTP protocol
- Customizable in a pre-execution, stand-alone environment, or with a user-friendly, graphical user interface when running under a Windows operating system

## Product Contents

When you purchase an Intel WfM-compatible adapter, the product package includes the following items related to the Boot Agent:

- A Boot Agent software image integrated into the adapter's flash ROM device
- A CD-ROM containing a set of DOS utilities, an Intel® Boot Agent User's Guide, and a readme file

Intel may occasionally provide Boot Agent software updates. A Boot Agent software update package consists of:

- A Boot Agent software image that can be loaded onto your client network adapter's flash ROM device
- A CD-ROM containing a set of DOS utilities, an Intel® Boot Agent User's Guide, and a readme file

This software and documentation as well as updates are available at the following web site:

*<http://support.intel.com>*

Then, search for "Boot Agent".

## **Operating Environment**

The Boot Agent operates in a client/server environment. Often, in this environment, one or more servers provide remote boot services to a large number of client computers through a common network.

### **Boot Services**

The Intel® Boot Agent has been tested using the following third-party operating systems/boot services:

- Microsoft\* Windows\* NT\* 4.0 Remote Boot Service
- Microsoft\* Windows 2000 Remote Installation Service (RIS)
- Linux\* PXE Server
- Novell\* NetWare\* RPL Module
- IBM\* OS/2\* RIPL Service

The computer system where the Boot Agent is loaded is considered to be a client with respect to the remote boot capability even if that system acts as a server after the system has finished booting.

# Client Computer Hardware Installation

Before you install the Boot Agent, make sure the client computer's hardware is installed properly—a compatible network adapter is installed and the Boot Agent software image resides within the network adapter's flash ROM.

The following sections guide you through the hardware installation process:

- Setup for a Known Configuration
- Determining the Client Computer Configuration
- Flash ROM and Intel WfM-Compatible Adapters
- Installing Flash ROM Upgrades

## Setup for a Known Configuration

If you have an Intel WfM-compatible adapter (such as the Intel® PRO/100+ Management Adapter) installed in your client computer, the flash ROM device is already available in your adapter, and no further installation steps are necessary. However, you may still wish to configure the Boot Agent software. To do so, see “Configuration Setup”.

If you do not have an Intel WfM-compatible adapter installed on your client computer, but you know the hardware configuration of your client computer, you can perform the steps indicated in Table 1 and then proceed directly to the proper installation section indicated in the table.

**Table 1: Boot Agent Installation Procedures**

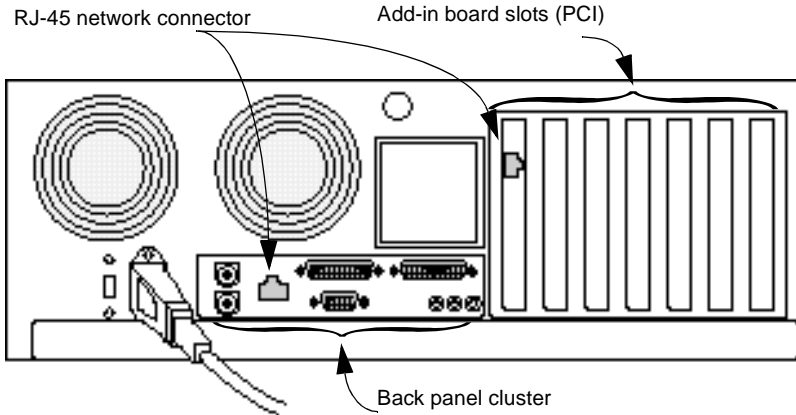
<b>Client Computer Hardware Configuration</b>	<b>Perform These Steps:</b>
<p>No network adapter is installed in client computer</p>	<ol style="list-style-type: none"> <li>1 Install a compatible network adapter. The adapter documentation gives installation instructions. (Compatible adapters include the Intel® PRO/100+ Management Adapter and the Intel® PRO/100+ Server Adapter. These adapters include an integrated flash ROM device.)</li> <li>2 If the adapter has an empty flash ROM socket, install a 64 KB (or larger) flash ROM device. See “Installing Flash ROM Upgrades” for installation instructions.</li> </ol>
<p>A network adapter is installed in client computer, but no flash ROM device is installed (or the flash ROM is smaller than 64 KB)</p>	<ol style="list-style-type: none"> <li>1 Remove the adapter. The adapter documentation gives removal/installation instructions.</li> <li>2 Install a 64 KB (or larger) flash ROM device containing a Boot Agent software image. See “Installing Flash ROM Upgrades” for installation instructions.</li> <li>3 Reinstall the adapter. The adapter documentation gives removal/installation instructions.</li> </ol>
<p>Client computer motherboard incorporates compatible LAN on motherboard (LOM) hardware</p>	<ol style="list-style-type: none"> <li>1 Follow the motherboard manufacturer’s update instructions to install the BIOS code that incorporates the Boot Agent software.</li> <li>2 Alternatively, if the motherboard has a separate ROM socket that accepts a 64 KB (or larger) flash ROM device containing a Boot Agent software image, see “Installing Flash ROM Upgrades” for installation instructions. Contact the motherboard manufacturer to get the code that must be loaded into the flash ROM in this case.</li> </ol>



## Identifying the Client Computer Configuration

To determine the hardware configuration of your client computer without removing its cover:

- 1 Examine the back panel of the computer to determine if there is a network adapter already installed. The following figure shows the back panel of a typical computer, and indicates the areas you should examine:



- 2 As shown in the figure, the network connector is an RJ-45 connector. If there is a network connector in the back panel cluster only, it is possible that the computer motherboard incorporates compatible LAN on motherboard (LOM) hardware. Contact the motherboard manufacturer to verify this information. If your motherboard is equipped with LOM hardware, perform either of the following:
  - a Follow the motherboard manufacturer's instructions to check if your computer's BIOS already handles Boot Agent capability. Otherwise, ask your manufacturer for a new BIOS upgrade for your system.
  - b Alternatively, if the motherboard has a separate ROM socket that accepts a 64 KB (or larger) flash ROM device containing a Boot Agent software image, see "Installing Flash ROM Upgrades" for installation instructions. Contact the motherboard manufacturer to get the code that must be loaded into the flash ROM in this case.
- 3 If there is no network connector at the back of your computer, you must install a network adapter and possibly a flash ROM device on the adapter. Refer to the installation procedures for the adapter for any setup requirements; then follow the procedures in "Installing Flash ROM Upgrades" before installing the adapter.
- 4 If there is a network connector in one of the add-in board slots, there might be a compatible network adapter already installed in the computer. Perform the following substeps to identify all compatible network adapters already installed in your computer:

- a Boot your computer to DOS (a DOS Command Prompt window will not work).
- b From the drive or directory containing the Boot Agent software, type `fboot` and then press Enter.

If there is no flash ROM device installed, you will get the following type of message:

NIC	Network Address	PWA Number	Flash Memory	Size	Valid
1	xxxxx00000000	xxxxxxx-xxx	No Flash	0	No

**NOTE:** If the flash ROM device installed in the adapter ROM socket is not large enough (64 KB or larger), `fboot` returns a message stating that the flash is too small, and does not allow you to proceed.

At this time, (assuming there is a large enough flash device installed) `fboot` will prompt you to update the flash ROM.

- c Update the flash ROM. See “Installing/Updating in DOS Environment” for instructions.
- d If there is no flash device installed, or if the installed flash device is too small, see “Installing Flash ROM Upgrades” for instructions.

## Flash ROM and Intel WfM-Compatible Adapters

All Intel Wired-for-Management-compatible (WfM-compatible) adapters are equipped with an integrated flash ROM device. The Boot Agent software image is pre-programmed into the flash ROM device at the factory; therefore, no software installation is required.

In some cases, such as when upgrading to a newer software version, you may need to update the flash ROM with a new Boot Agent software image. See “Installing/Updating in DOS Environment” for information about installing or updating the flash ROM with a new Boot Agent software image in a DOS environment (when Windows is not running). See “Updating in Windows Environments Using PROSet II” for information about updating the flash ROM with a new Boot Agent software image in Windows environments.

## Installing Flash ROM Upgrades

If your adapter is not equipped with an integrated flash ROM device, install a flash ROM device in your adapter.

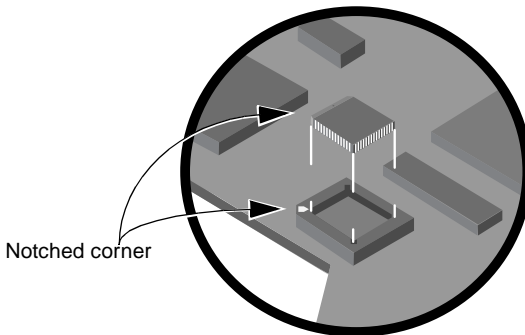
To install a flash ROM device:

- 1 Turn off and unplug your computer. Then, remove its cover.

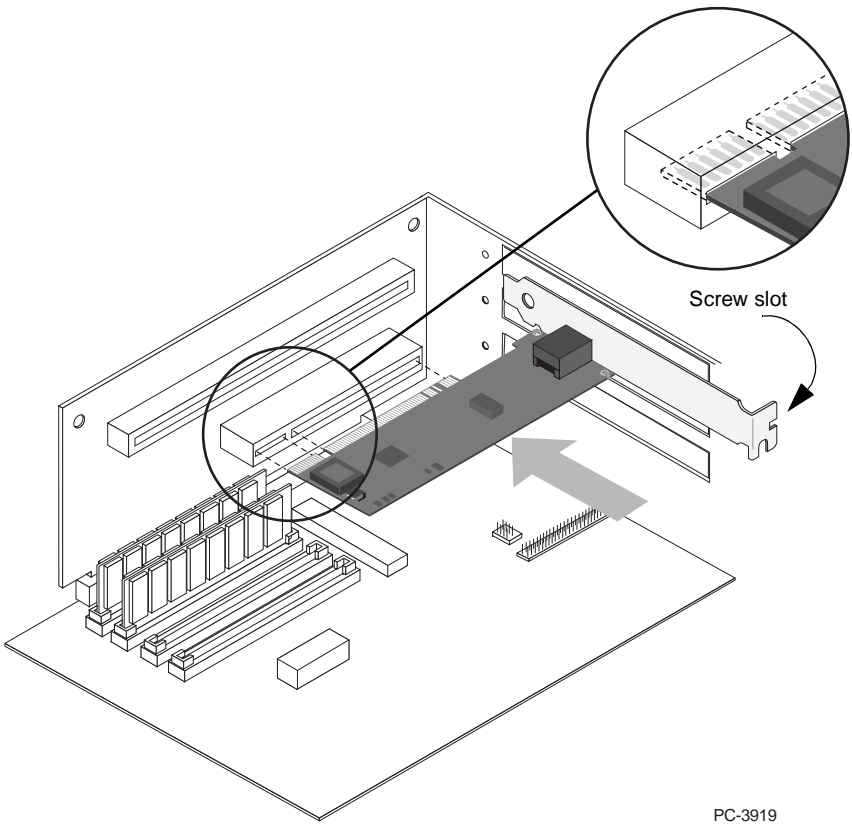


Turn off and unplug the computer before removing the computer cover. Failure to do so could endanger you and might damage the adapter or computer. Observe appropriate static electricity handling precautions when working with components, adapters, and the computer.

- 2 Identify the adapter and the adapter slot in which it is installed. Then, remove the adapter bracket screw.
- 3 Remove the adapter and move it to an area free of static electricity. The following figure shows how to install the flash ROM device in the socket:



- 4 Refer to the figure and install the flash ROM device in the socket of the adapter. Note the location of the notched corner of the flash ROM device and the corresponding notch in the socket. There is only one correct orientation for the flash ROM device.
- 5 Reinstall the adapter in the slot from which you removed it. If you are installing the adapter for the first time, follow the adapter installation instructions and install it in an appropriate PCI expansion slot (refer to the following figure).



PC-3919

- 6 Push the adapter into the slot until the adapter is firmly seated. Then, secure the adapter bracket with a screw.
- 7 Replace the computer cover and plug in the power cord.
- 8 Turn on the power. The computer BIOS automatically assigns resources to a PCI adapter. If you get a configuration error, see the troubleshooting instructions in the adapter's installation guide.

# Installing the Boot Agent Software Image

All Intel WfM-compatible adapters, such as the Intel PRO/100+ Management Adapter, have a factory-installed, integrated flash ROM device that has been pre-programmed with a Boot Agent software image. Therefore, no software installation is required.

Installation of the Boot Agent on other Intel adapters requires a flash ROM device (non-volatile storage device) to be present within the client computer system. This flash ROM can take these forms:

- A factory-installed, integrated flash ROM device on the computer motherboard with remote boot enabled LOM (LAN On Motherboard) hardware support
- A field-upgraded, add-on flash ROM device installed into your network adapter

In cases involving hardware upgrades, once a flash ROM device is available within the client computer, a valid Boot Agent software image must be installed onto the flash ROM device. The way in which the Boot Agent software image is installed within the flash ROM depends upon your hardware configuration.

- If your computer includes the network adapter on its motherboard, the Boot Agent software might need to be installed as part of a motherboard BIOS code upgrade. Contact your computer or motherboard manufacturer to upgrade your motherboard BIOS code. Alternatively, it is possible that the motherboard has a ROM socket with a 64 KB (or larger) flash ROM device. In this case, contact the motherboard manufacturer to get the code that must be loaded into the flash ROM.
- If your computer uses a flash ROM-equipped adapter, use one of the following procedures depending upon whether you are installing or updating the Boot Agent software in a DOS environment or updating the Boot Agent in a Windows\* environment:

## Installing/Updating in DOS Environment

To install or update the Boot Agent software in a DOS environment:

- 1 The following operation requires use of a DOS bootable floppy disk containing an executable image of the fboot.exe utility as well as the current flash ROM image file, which will have an .FLS extension. If you do not have fboot.exe on your DOS bootable floppy disk, copy it to your system disk from the CD ROM that came with your product under the \BOOTAGNT directory or acquire the most up-to-date version from Intel's website at:

*<http://support.intel.com>*

- Using your DOS bootable floppy disk, boot your computer to a DOS prompt.



The next several steps require that your computer be booted *only* to DOS, and *not* from a Windows “DOS box”. These steps cannot be performed from a DOS Command Prompt window or using a DOS task within Windows.

**NOTE:** If the flash ROM device installed in the adapter ROM socket is already programmed (not blank), you may need to take steps to enable your computer to boot from the floppy drive. If necessary, disable the network boot function from either the BIOS Setup program or the Boot Agent’s configuration setup menu. Then reboot to the DOS bootable floppy disk containing the fboot utility that you just prepared.

- Type:

fboot

The following message appears showing a list of all compatible network adapters found in your system, assuming both the adapter and the flash ROM device are properly installed:

```
[FBOOT ver x.x] - Intel PCI NIC BOOT FLASH Update Utility
Copyright (C), 1995 - 2000 Intel Corporation
```

NIC	Network Address	PWA Number	FLASH Memory	Size	Valid
1	00A0C9A4230B	689661-003	SST 29LE512	64	Yes

Select NIC to update or ESC to exit:

- If more than one adapter is installed in your system, you will need to enter the NIC number (from the displayed list) that corresponds to the Ethernet MAC address of the desired adapter. In cases where only one adapter is present, however, press “1” to continue. The next question appears:

Select Option (U)pdate or (R)estore:

- Type U (update) if you want the fboot utility to update the flash ROM device with the current version of Boot Agent software. Type R (restore) if you want the fboot utility to write a previously-stored flash image file onto the flash ROM device.

**NOTE:** As part of the Update operation, fboot creates a backup file on the floppy disk. Make sure that the write-enable tab on the floppy disk is properly set.

Prior to the Restore operation, make sure that a flash image file is available in the same directory as the fboot utility. This file will have an automatically-generated filename with an .FLS extension.

If you select the U (update) response, this prompt appears:

Create Restore Image (Y)es or (N)o:

- 6 Type Y (yes) to create a flash image file from the current (not yet updated) image of the flash ROM device. Type N (no) to cause fboot to proceed without first saving a copy of the current contents of the flash ROM device.

If you choose not to save a copy of the current contents of the flash ROM device (type N), fboot asks you the following question:

Continue Update Without Restore Image (Y)es or (N)o:

- 7 Type Y (yes) to continue, which will update the flash image. Type N (no) to cancel the update, which will leave the flash contents unchanged.

**NOTE:** The fboot utility automatically names the flash image file (backup file) as XXXXXXXX.FLS, where XXXXXXXX are the last eight digits of the adapter's Ethernet address. If there is already a flash image file in the fboot directory, delete it first if you want to save a new version of the flash ROM device image. The fboot utility will not overwrite this file.

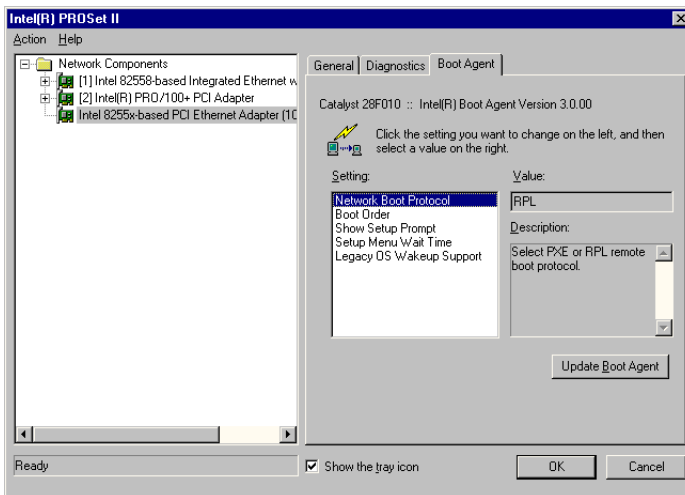
Once you have answered the questions posed by the fboot utility, it creates the flash image file (if appropriate), and then writes the current version of the Boot Agent image to the flash ROM device used by your network adapter. The Boot Agent image is embedded in the fboot utility itself. This process takes approximately one minute and then fboot exits to the DOS prompt.

## Updating in Windows Environments Using PROSet II

**NOTE:** The Boot Agent update operation involves writing the Boot Agent image into the flash ROM, which may temporarily disable the operation of the Windows network device driver. Depending on what software is installed in your system, you may need to reboot the computer following this operation.

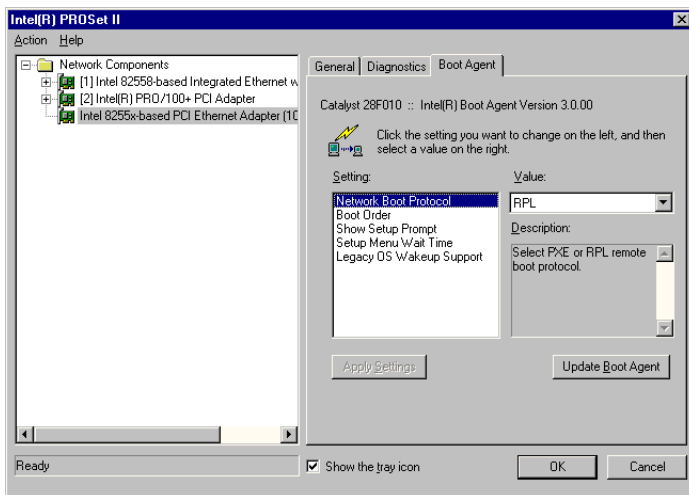
To update the Boot Agent software in Windows environments using PROSet II:

- 1 When downloading a flash ROM image file from Intel's web site, be sure to save it to a temporary directory or a location where you can easily locate it for this procedure.
- 2 From the Windows Start menu, click Settings, and then click Control Panel. The Control Panel window appears.
- 3 Double-click the Intel PROSet icon.
- 4 Click the Boot Agent tab. The Boot Agent tab appears. If the tab does not appear, update your network driver or make sure you have Intel® PROSet II Version 4.0 or higher.

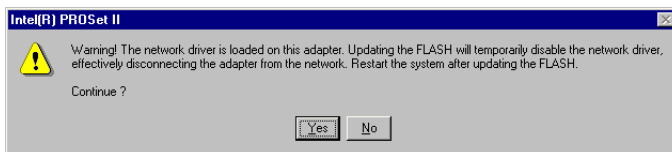


- 5 Press Ctrl+S to enable a special capability allowing you to copy a Boot Agent image, stored on disk, into the flash ROM. Once you press Ctrl+S, the appearance of the Boot Agent tab changes to include a grayed-out (disabled) Apply Settings button.

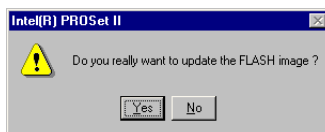




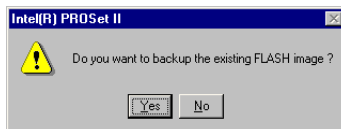
- 6 Click the Update Boot Agent button. If the Windows network device driver is active (loaded and enabled), the following dialog box appears:



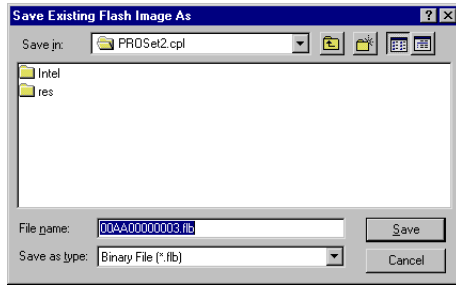
If the Windows network device driver is inactive (disabled or not loaded), the following dialog box appears:



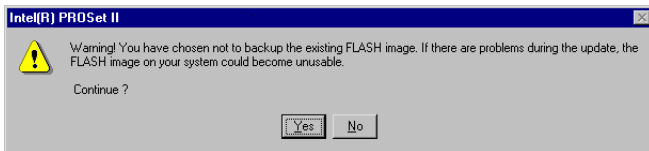
- 7 In either case, click Yes to continue with the update process. The following dialog box appears:



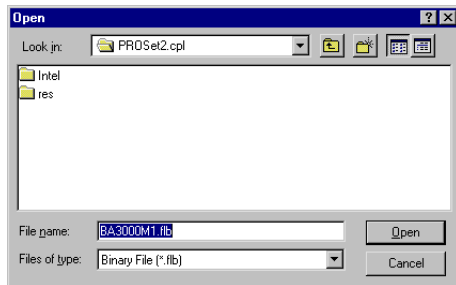
- 8 If you want to create a backup of the current flash ROM image before updating the flash, click Yes. The Save Existing Flash Image As dialog appears. Proceed to Step 9.



If not saving a backup of the current flash ROM image to a file, click No. The following dialog box appears. Click Yes to continue and then proceed to Step 10.



- 9 Click Save if you want to accept the default path and filename (the filename defaults to the adapter's unique MAC address). Otherwise, modify these parameters and then click Save.
- 10 At the Open File dialog box, click Open if the desired flash ROM image file you stored in Step 1 appears as the screen's default path and filename. Otherwise, modify the path and filename and then click Open.



The flash ROM update process takes between five and ten seconds, and a progress control gauge appears while the update operation is in progress. The Boot Agent software image is now copied to the flash ROM.

# Server System Setup

**NOTE:** When the Boot Agent software is installed as an upgrade for an earlier version boot ROM, the associated server-side software may not be compatible with the updated Boot Agent. Contact your system administrator to determine if any server updates are necessary.

For the Boot Agent software to perform its intended job, there must be a server set up on the same network as the client computer. That server must recognize and respond to the PXE or RPL boot protocols that are used by the Boot Agent software.

The following sections describe the actions you should take to set up various types of servers to work with the Boot Agent. If you have questions concerning the setup of your server system, contact the manufacturer of your server hardware or your server operating system vendor for assistance. The following sections provide pointers to server setup instructions:

- Windows 2000 RIS Server Setup
- Linux Server Setup
- Other Server Setup Information

## Windows\* 2000 RIS Server Setup

For information about setting up a Windows 2000 RIS Server:

- 1 Consult the following web site:  
*<http://www.microsoft.com/windows2000>*
- 2 Select Technical Library.
- 3 Select How it Works.
- 4 Select Remote Operating System Installation under the Management tab.
- 5 Select Download this document.

## Linux\* Server Setup

Consult your Linux vendor for information about setting up the Linux Server.

## Other Server Setup Information

Various hardware and software manufacturers provide products that support remote boot technology, conforming either to the Wired for Management (WfM) specifications or the PXE/RPL/BOOTP/DHCP protocols. The following web sites provide useful information on setting up your server to such remote boot capabilities:

- <http://www.microsoft.com>  
Microsoft produces operating systems that are used by both client and server systems in a remote boot environment. Search this site for technical information and commercial products applying to Intel WfM-compatible systems, PXE and RPL environments, and remote booting.
- <http://www.sco.com>  
SCO produces SCO\* Unix, an operating system used on many servers. Search this site for technical information and commercial products related to remote boot servers.
- <http://www.bootix.com>  
Bootix Technology GmbH produces software for boot management solutions. The available products include a large range of special-purpose tools concentrating on LAN and WAN technology for large internal networks. Search this site for remote boot products supporting BOOTP, RPL, and PXE protocols on a range of client and server types.
- <http://www.weird-solutions.com>  
Weird Solutions produces client and server support software for Windows NT or Windows 98 computers. Search this site for support software products supporting BOOTP, TFTP, and DHCP services on computers based on Windows NT or Windows 98.
- <http://www.sun.com>  
<http://java.sun.com>  
Sun produces both hardware and software that can be used in either a client or a server application. Search these sites for technical information and commercial products applying to WfM-compatible systems, PXE and RPL environments, and remote booting.
- <http://samba.org/samba>  
The Samba organization produces and supports software that runs on UNIX servers and clients. The software available through Samba complies with GNU Public License requirements. Search this site for information on implementing remote booting on UNIX servers.

- <http://www.novell.com>  
Novell produces network operating systems and related support software. Search this site for technical information and commercial products applying to WfM-compatible systems, PXE and RPL environments, and remote booting.
- <http://www.ibm.com>  
IBM produces both hardware and software that can be used in either a client or a server application. Search this site for technical information and commercial products applying to WfM-compatible systems, PXE and RPL environments, and remote booting.
- <http://www.altiris.com>  
Altiris, Inc. produces software for boot management solutions. The available products include special-purpose tools concentrating on LAN and WAN technology for internal networks. Search this site for remote boot products supporting a range of client and server types.
- <http://www.xpoint-tech.com>  
Xpoint Technologies, Inc. provides disaster recovery applications that use PXE to restore system configurations from servers. Search this site for information about their products that provide instant recovery for your PC.

# Configuration Setup

The Boot Agent software provides configuration options that allow you to customize the behavior of the Boot Agent software. Changing the Boot Agent configuration will usually be required only the first time you add a new network adapter to a client computer within your network. You can configure the Boot Agent either within a pre-boot environment (before an operating system is loaded), or you can configure the Boot Agent using a Windows interface.

## Configuring the Boot Agent in a Pre-Boot Environment

You can customize the behavior of the Boot Agent software through a pre-boot (operating system independent) configuration program contained within the adapter's flash ROM. You can access this pre-boot configuration setup program each time the client computer cycles through the boot process. The boot process is triggered whenever you perform any of the following boot events:

- Power on
- Hard reset (Reset button on system, if available)
- Soft reset (Ctrl+Alt+Del)
- Operating system or application-initiated system restart

When the boot process begins, the screen clears and the computer begins its Power On Self Test (POST) sequence. Shortly after completion of the POST, the Boot Agent software stored in flash ROM executes. The Boot Agent then displays an initialization message, similar to the one below, indicating that the Boot Agent is active.

```
Initializing Intel(R) Boot Agent Version 3.X.XX
PXE m.m Build nnn (WfM w.w), RPL Vm.mm

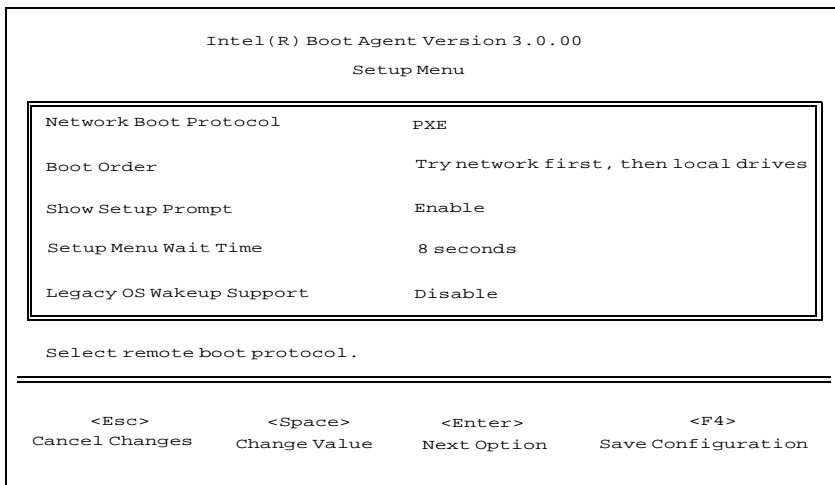
Press Ctrl+S to enter the Setup Menu.
```

**NOTE:** This display may be hidden by the manufacturer's splash screen. Consult your manufacturer's documentation for details.

To customize the behavior of the Boot Agent software:

- 1 Press Ctrl+S immediately after the initialization message appears. A configuration setup menu appears allowing you to set configuration values for the Boot Agent.

**NOTE:** Immediately after the initialization message appears, and before any subsequent messages appear, you have several seconds in which to press Ctrl+S to display the Boot Agent's configuration setup menu. If you do not press Ctrl+S, the Boot Agent software will proceed with the boot process, eventually bringing up the operating system. If you miss your opportunity to press Ctrl+S within the allowed number of seconds, reboot the computer to try again. If the setup message is disabled (Show Setup Prompt: Disable), you will not be prompted to press Ctrl+S, even though you can still enter the configuration setup menu using this key combination.



The configuration setup menu shows a list of configuration settings on the left and their corresponding values on the right. Key descriptions near the bottom of the menu indicate how to change setting values. For each selected setting, a brief “mini-Help” description of its function also appears near the bottom of the menu.

- 2 Select the setting you want to change by pressing Enter to select among settings.
- 3 Once you have accessed the setting you want to change, press the spacebar until the desired value appears.
- 4 If you want to change additional settings, repeat Steps 2 and 3.
- 5 Once you have completed your changes, press F4 to update the adapter with the new values.

Table 2 provides a list of configuration settings, their possible values, and their detailed descriptions.

**Table 2: Boot Agent Configuration Settings**

Configuration Setting	Possible Values	Description
Network Boot Protocol	PXE RPL	<p>Select PXE for use with WfM-compatible network management programs, such as Intel® LANDesk® Management Suite, Windows 2000 RIS, and Linux.</p> <p>Select RPL for legacy-style remote booting.</p> <p><b>NOTE:</b> If your Boot Agent does not support RPL, this setting will be unchangeable.</p>
Boot Order	<p>“Use BIOS Setup Boot Order”</p> <p>“Try network first, then local drives”</p> <p>“Try local drives first, then network”</p> <p>“Try network only”</p> <p>“Try local drives only”</p>	<p>Allows you to select the order in which boot devices are queried when the system boots. If your client computer’s BIOS supports the BIOS Boot Specification (BBS) or allows PnP-compliant selection of the boot order in the BIOS setup program, then this setting will always be “Use BIOS Setup Boot Order” and cannot be changed. In this case, refer to the BIOS setup manual specific to your client computer to set up boot options.</p> <p>If your client computer does not support BBS- or PnP-compliant BIOS, you can select any one of the values listed in the Possible Values column of this table for this setting except for “Use BIOS Setup Boot Order”.</p>
Setup Menu Wait Time	2 seconds 3 seconds 5 seconds 8 seconds	The number of seconds the Boot Agent waits for you to press Ctrl+S during the system boot process.
Show Setup Prompt	Enable Disable	<p>If you select Enable, the Ctrl+S prompt appears during your computer’s POST sequence.</p> <p>If you select Disable, the Ctrl+S prompt does not appear. However, you can still press Ctrl+S to enter the setup program during your computer’s POST sequence.</p>



Configuration Setting	Possible Values	Description
Legacy OS Wakeup Support	Enable Disable	<p>This setting applies only to Intel PRO/100+ WfM-compatible, 82559-based (or later) adapters.</p> <p>Select Disable for this setting when using an ACPI Windows operating system such as Windows 2000 or Windows 98SE.</p> <p>Select Enable to allow non-Windows operating systems (such as DOS or NetWare) to make use of the Intel WfM-compatible adapter's remote wakeup capability.</p> <p><b>NOTE:</b> Consult your operating system instructions to determine if your operating system supports remote wakeup, as well as how to use this capability.</p>

## Configuring the Boot Agent in a Windows Environment

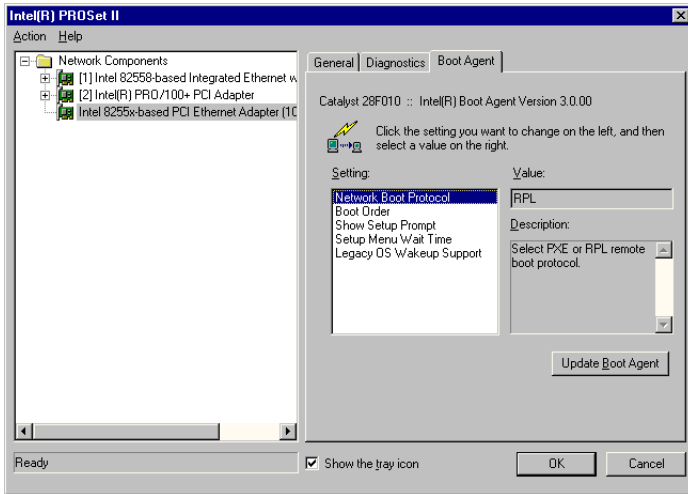
If you use Windows on your client computer, you can use the Intel® PROSet II program to configure and update the Boot Agent software. The PROSet II program is available under the standard Windows Control Panel facility. The PROSet II program provides a special tab, called the Boot Agent tab, used for configuring and updating the Boot Agent software.

To access the PROSet Boot Agent tab:

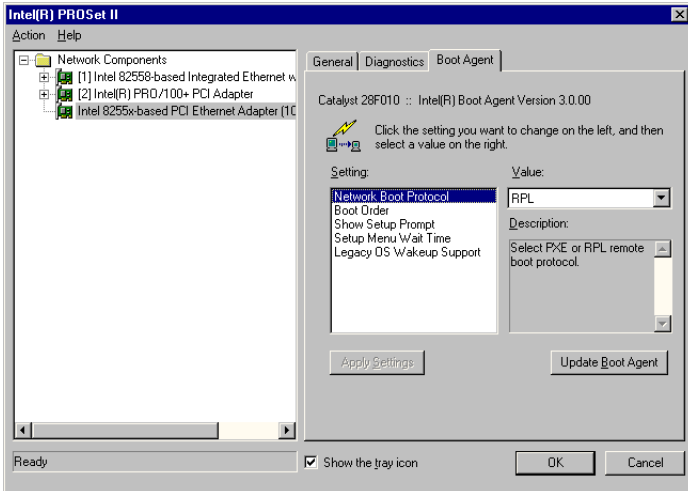
**NOTE:** Changing the Boot Agent configuration settings requires Intel® PROSet II Version 4.0 or higher, and involves changes to the Windows network device driver. Updating the configuration settings will temporarily disable the operation of the Windows network device driver. Depending on what software is installed on your system, you may need to reboot the computer following this operation.

- 1 From the Windows Start menu, click Settings, and then click Control Panel. The Control Panel window appears.
- 2 Double-click the Intel PROSet icon.

3 Click the Boot Agent tab. The Boot Agent tab appears.



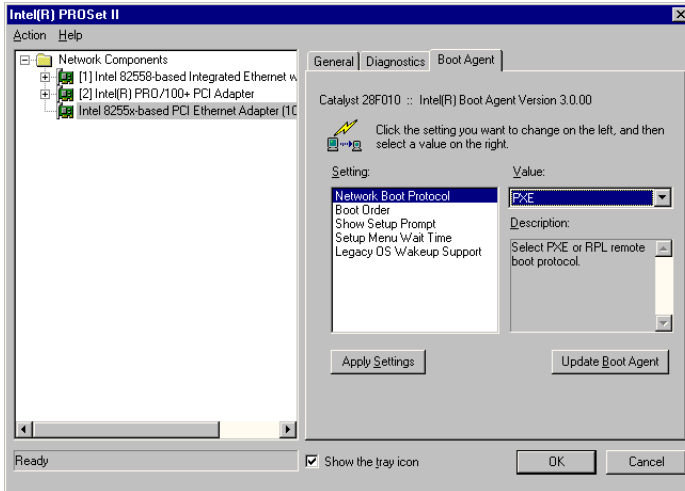
4 Press Ctrl+S to enable a special capability allowing you to change the Boot Agent configuration settings. Once you press Ctrl+S, the appearance of the Boot Agent tab changes to include a grayed-out (disabled) Apply Settings button.



The Boot Agent tab shows a list of configuration parameters and their corresponding values. For each configuration parameter within the Setting selection list, its corresponding value is shown in the Value drop-down list. For each selected setting, a brief description of its function appears in the Description box. See Table 2 on page 20 for a list of configuration parameters, their possible values, and detailed descriptions.

- 5 Select a setting you want to change from the Setting selection box.
- 6 Select a value for that setting from the Value drop-down list.

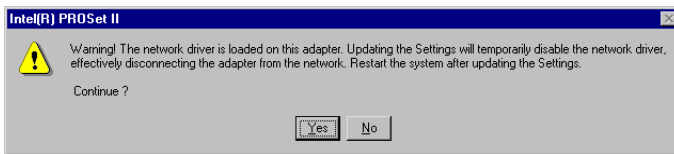
**NOTE:** Notice that once you change a value, the Apply Settings button is no longer grayed.



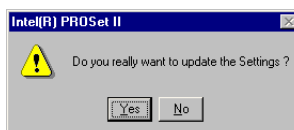
- 7 Repeat Steps 5 and 6 to change any additional settings.
- 8 Once you have completed your changes, click Apply Settings to immediately update the adapter with the new values.

**NOTE:** Exiting Intel® PROSet II by clicking the OK button also updates the adapter with the new values.

After you click Apply Settings, if the Windows network device driver is active (loaded and enabled), the following dialog box appears:



If the Windows network device driver is inactive (disabled or not loaded), the following dialog box appears:



- 9 In either case, click Yes to continue with the configuration update process. Clicking Yes updates the adapter with the new settings. If the network driver is loaded on the adapter, be sure to reboot the system after the update operation completes.

# Auxiliary DOS Utilities

The Intel® PROSet II configuration and diagnostic utility requires use of the Windows operating environment. For systems without Windows, Intel provides utilities for installing and configuring the Boot Agent using the DOS environment. These utilities include:

- The fboot utility backs up the current flash ROM image to a file and copies a new Boot Agent image file into the flash ROM using a simplified, menu-based user interface.
- The BROW utility provides an alternative means for modifying the adapter configuration settings.

Both of the above auxiliary DOS utilities are available on Intel's web site at:

<http://support.intel.com>

Both of these DOS utilities are also located on the CD-ROM in the directory:

\BOOTAGNT

## fboot Utility

The fboot utility is an interactive method that most users follow to install or upgrade the Boot Agent software. To use this utility, you must have an adapter (along with a 64 KB (or larger) flash ROM device) installed in your computer.

- 1 The following operation requires use of a DOS bootable floppy disk containing an executable image of the fboot.exe utility as well as the current flash ROM image file, which will have an .FLS extension. If you do not have fboot.exe on your DOS bootable floppy disk, copy it to your system disk from the CD ROM that came with your product under the directory, \BOOTAGNT, or acquire the most up-to-date version from Intel's website at:

<http://support.intel.com>

- 2 Using your DOS bootable floppy disk, boot your computer to a DOS prompt.



The next several steps require that your computer be booted *only* to DOS, and *not* from a Windows "DOS box". These steps cannot be performed from a DOS Command Prompt window or using a DOS task within Windows.

**NOTE:** If the flash ROM device installed in the adapter ROM socket is already programmed (not blank), you may need to take steps to enable your computer to boot from the floppy drive. If necessary, disable the network boot function from either the BIOS Setup program or the Boot Agent's configuration setup menu. Then reboot to the DOS bootable floppy disk containing the fboot utility that you just prepared.

### 3 Type:

fboot

The following message appears showing a list of all compatible network adapters found in your system, assuming both the adapter and the flash ROM device are properly installed:

```
[FBOOT ver x.x] - Intel PCI NIC BOOT FLASH Update Utility  
Copyright (C), 1995 - 2000 Intel Corporation
```

NIC	Network Address	PWA Number	FLASH Memory	Size	Valid
1	00A0C9A4230B	689661-003	SST 29LE512	64	Yes

Select NIC to update or ESC to exit:

- 4 If more than one adapter is installed in your system, you will need to enter the NIC number (from the displayed list) that corresponds to the Ethernet MAC address of the desired adapter. In cases where only one adapter is present, however, press "1" to continue. The next question appears:

Select Option (U)pdate or (R)estore:

- 5 Type U (update) if you want the fboot utility to update the flash ROM device with the current version of Boot Agent software. Type R (restore) if you want the fboot utility to write a previously-stored flash image file onto the flash ROM device.

**NOTE:** As part of the Update operation, fboot creates a backup file on the floppy disk. Make sure that the write-enable tab on the floppy disk is properly set.

Prior to the Restore operation, make sure that a flash image file is available in the same directory as the fboot utility. This file will have an automatically-generated filename with an .FLS extension.

If you select the U (update) response, this prompt appears:

Create Restore Image (Y)es or (N)o:

- 6 Type Y (yes) to create a flash image file from the current (not yet updated) image of the flash ROM device. Type N (no) to cause fboot to proceed without first saving a copy of the current contents of the flash ROM device.

If you choose not to save a copy of the current contents of the flash ROM device (type N), fboot asks you the following question:

Continue Update Without Restore Image (Y)es or (N)o:

- 7 Type Y (yes) to continue, which will update the flash image. Type N (no) to cancel the update, which will leave the flash contents unchanged.

**NOTE:** The fboot utility automatically names the flash image file (backup file) as XXXXXXXX.FLS, where XXXXXXXX are the last eight digits of the adapter's Ethernet address. If there is already a flash image file in the fboot directory, delete it first if you want to save a new version of the flash ROM device image. The fboot utility will not overwrite this file.

Once you have answered the questions posed by the fboot utility, it creates the flash image file (if appropriate), and then writes the current version of the Boot Agent image to the flash ROM device used by your network adapter. The Boot Agent image is embedded in the fboot utility itself. This process takes approximately one minute and then fboot exits to the DOS prompt.

## BROW Utility

BROW, which stands for Boot ROM / Wake-on-LAN\*, is a utility program that changes the default settings of your WfM-compatible adapter. These settings can only be changed with BROW. Once set, these settings cannot be changed from the Boot Agent's configuration setup menu or from PROSet's Boot Agent tab. BROW can be used to enable or disable the Wake-on-LAN and Boot Agent capabilities, as well as enable or disable some settings used by the Boot Agent.

If you disable Wake-on-LAN on an adapter, that adapter is unable to respond to a wake-up packet and remotely power on the computer. Disabling Wake-on-LAN also reduces the amount of current the adapter draws from the standby power supply when the computer is powered off.

Disabling the Boot Agent prevents it from executing during the computer power up/boot sequence.

### Running BROW

BROW must be run with the computer booted to DOS only, with no software drivers loaded. This utility cannot be run in a DOS window in any Microsoft Windows product or in DOS compatibility mode in IBM OS/2.

BROW can be run with any of the command line options found in Table 3 using the following syntax:

```
BROW [-option]...
```



**Table 3: BROW Options**

Option	Short Form	Description
-ALL		Selects all adapters found in system.
-EXITCODES		Brings up exit code help.
-HELP	-?	Brings up command line help.
-NIC=XX		Selects a specific adapter (1-8). BROW will not interact with any adapters unless you explicitly specify which adapters you want it to interact with. You can use the -NIC-xx option to select a single adapter, or use the -ALL option to select all of the adapters in your system.
-BOOTENABLE	-BE	Enables Boot ROM.
-BOOTDISABLE	-BD	Disables Boot ROM.
-WOLDISABLE	-WOLD	Disables remote system wake up (WOL).
-WOLENABLE	-WOLE	Enables remote system wake up (WOL).

**NOTE:** If you run BROW without any command line options, the utility will display a list of all the adapters found in your system.

## Examples

### Example 1:

To disable WOL on all adapters, call BROW like this:

```
BROW -ALL -WOLDISABLE
```

### Example 2:

To enable WOL on the second adapter found in your system, call BROW like this:

```
BROW -NIC=2 -WOLENABLE
```

### Example 3:

To disable the Boot ROM on all adapters, call BROW like this:

```
BROW -ALL -BOOTDISABLE
```

### Example 4:

To enable the Boot ROM on the first adapter found in your system, call BROW like this:

```
BROW -NIC=1 -BOOTENABLE
```

# Boot Agent Messages

The Boot Agent may display one or more of the following messages during initialization:

## Information Messages

***This option has been locked and cannot be changed.***

This message appears when the user tries to change a configuration setting that has been locked by your system administrator with the BROW utility. This message can appear either from within PROSet's Boot Agent tab when operating under Windows\* or from the configuration setup menu when operating in a stand-alone environment. If you think you should be able to change the configuration setting, consult your system administrator.

## Adapter-Related Error Messages

***PXE-E05: The LAN adapter's configuration is corrupted or has not been initialized. The Boot Agent cannot continue.***

The Boot Agent determined that the adapter EEPROM checksum is incorrect. The agent will return control to the BIOS and not attempt to remote boot. Try to update the flash image. If this does not solve the problem, contact your system administrator or Intel® Customer Support either by telephone or over the World Wide Web. Phone numbers and web sites are listed at the back of this manual.

***PXE-E04: The LAN adapter is not functioning correctly or the wrong Boot Agent is installed. The Boot Agent cannot continue.***

The Boot Agent was unable to read one or more of the adapter's PCI configuration registers. The adapter may be misconfigured, or the wrong Boot Agent image may be installed on the adapter. The Boot Agent will return control to the BIOS and not attempt to remote boot. Try to update the flash image. If this does not solve the problem, contact your system administrator or Intel® Customer Support either by telephone or over the World Wide Web. Phone numbers and web sites are listed at the back of this manual.

## System-Level Error Messages

***PXE-E06: This system does not support PCI option ROMs. The Boot Agent cannot continue.***

The BIOS does not support the mapping of the PCI expansion ROMs into upper memory as required by the PXE specification. The Boot Agent cannot function in this system. The Boot Agent returns control to the BIOS and does not attempt to remote boot. You may be able to resolve the problem by updating the BIOS on your system. If updating your system's BIOS does not fix the problem, contact your system administrator or your computer vendor's customer support to resolve the problem.

***PXE-E00: This system does not have enough free conventional memory. The Boot Agent cannot continue.***

The Boot Agent was unable to find enough free base memory (below 640 K) to install the PXE client software. The system cannot boot via PXE in its current configuration. The error returns control to the BIOS and the system does not attempt to remote boot. If this error persists, try updating your system's BIOS to the most-recent version. Contact your system administrator or your computer vendor's customer support to resolve the problem.

# Troubleshooting Procedures

The following list of problems and associated solutions covers a representative set of problems that you might encounter while using the Boot Agent.

If you are experiencing a problem that is not listed in this section, contact Intel® Customer Support either by telephone or over the World Wide Web. Phone numbers and web sites are listed at the back of this manual.

## ***Media test failure, check cable***

When an error message like this appears, it means the adapter did not detect a viable network connection. Look at the RJ-45 network connector at the back of your computer and verify that a network cable is plugged in. See “Identifying the Client Computer Configuration” for help in identifying the network connector.

If the network cable is installed correctly at the rear of your computer, it is possible that it is not connected to a server, or that the server has not yet been set up correctly. Make sure your computer is properly set up and connected to the network server before trying to set up the Boot Agent.

## ***Flash device wrong size***

The full version of Boot Agent software cannot be loaded into a flash ROM device smaller than 64 KB. If a 32 KB (or smaller) flash ROM device is detected in the adapter, the Boot Agent software returns the “Flash device wrong size” message. Assuming the device is socketed, remove the “too small” device and install a blank 64 KB (or larger) flash ROM device. See “Configuration Setup” for more information.

## ***Cannot change boot order***

If you are accustomed to redefining your computer’s boot order using the motherboard BIOS setup program, the default settings of the Boot Agent setup program can override that setup. To change the boot sequence, you must first override the Boot Agent setup program defaults. To start the Boot Agent configuration setup program, press Ctrl+S during the time the initialization message appears. A configuration setup menu appears allowing you to set configuration values for the Boot Agent. If you do not press Ctrl+S, the Boot Agent software proceeds with the boot process, eventually bringing up the operating system. To change your computer’s boot order setting, see “Configuration Setup”.

## ***There are configuration/operation problems with the boot process***

For some specific configurations and operating conditions, the boot process does not proceed as expected. Contact Intel® Customer Support.

### ***Not getting a prompt to go to Boot Agent setup program***

This is actually a feature of the Boot Agent product. As part of the setup program, one of the options allows you to turn off the prompt that says:

```
Press Ctrl+S to enter the Setup Menu.
```

You can still press the Ctrl+S key combination to enter the setup program, but the prompt is not displayed telling you when to do so. Immediately after POST, repeatedly press the Ctrl+S key combination until the Boot Agent setup program starts. While in the setup program, you can restore the prompt message if you want.

### ***My computer does not complete POST***

This problem occurs before the Boot Agent software has even begun operating. There is a software or BIOS problem with your computer. Contact your computer manufacturer's customer support group for help in correcting your problem.

### ***After booting, my computer experiences problems***

After the Boot Agent product has finished its sole task (remote booting), it no longer has any effect on the client computer operation. Any problems you are having with your computer after it completes the boot process are most likely related to another part of the computer.

If you are having problems with the local (client) or network operating system, contact the operating system manufacturer for assistance. If you are having problems with some application program, contact the application manufacturer for assistance. If you are having problems with any of your computer's hardware or with the BIOS, contact your computer system manufacturer for assistance.

# Glossary

The Glossary defines terms, abbreviations, and acronyms that apply directly to the Boot Agent.

BBS	BIOS Boot Specification
BIOS	Basic Input Output System
BIS	Boot Integrity Services
BOOTP	Bootstrap Protocol
DHCP	Dynamic Host Configuration Protocol
ESD	Electro-Static Discharge
NIC	Network Interface Controller (same as adapter)
OS	Operating System
PnP	Plug and Play
PXE	Pre-boot eXecution Environment
RPL	Remote Program Load
URL	Uniform Resource Locator
WfM	Wired for Management

# Licensing and Support

## Network Software License Agreement

### IMPORTANT - READ BEFORE COPYING, INSTALLING OR USING.

Do not use or load this software and any associated materials (collectively, the "Software") until you have carefully read the following terms and conditions. By loading or using the Software, you agree to the terms of this Agreement. If you do not wish to so agree, do not install or use the Software.

**LICENSE.** You may copy the Software onto a single computer for your personal, non-commercial use, and you may make one back-up copy of the Software, subject to these conditions:

1. **This Software is licensed for use only in conjunction with Intel component products. Use of the Software in conjunction with non-Intel component products is not licensed hereunder.**
2. You may not copy, modify, rent, sell, distribute or transfer any part of the Software except as provided in this Agreement, and you agree to prevent unauthorized copying of the Software.
3. You may not reverse engineer, decompile, or disassemble the Software.
4. You may not sublicense or permit simultaneous use of the Software by more than one user.
5. The Software may contain the software or other property of third party suppliers, some of which may be identified in, and licensed in accordance with, any enclosed "license.txt" file or other text or file.

**OWNERSHIP OF SOFTWARE AND COPYRIGHTS.** Title to all copies of the Software remains with Intel or its suppliers. The Software is copyrighted and protected by the laws of the United States and other countries, and international treaty provisions. You may not remove any copyright notices from the Software. Intel may make changes to the Software, or to items referenced therein, at any time without notice, but is not obligated to support or update the Software. Except as otherwise expressly provided, Intel grants no express or implied right under Intel patents, copyrights, trademarks, or other intellectual property rights. You may transfer the Software only if the recipient agrees to be fully bound by these terms and if you retain no copies of the Software.

**LIMITED MEDIA WARRANTY.** If the Software has been delivered by Intel on physical media, Intel warrants the media to be free from material physical defects for a period of ninety (90) days after delivery by Intel. If such a defect is found, return the media to Intel for replacement or alternate delivery of the Software as Intel may select.

**EXCLUSION OF OTHER WARRANTIES. EXCEPT AS PROVIDED ABOVE, THE SOFTWARE IS PROVIDED "AS IS" WITHOUT ANY EXPRESS OR IMPLIED WARRANTY OF ANY KIND INCLUDING WARRANTIES OF MERCHANTABILITY, NON-INFRINGEMENT, OR FITNESS FOR A PARTICULAR PURPOSE.** Intel does not warrant or assume responsibility for the accuracy or completeness of any information, text, graphics, links or other items contained within the Software.

**LIMITATION OF LIABILITY.** IN NO EVENT SHALL INTEL OR ITS SUPPLIERS BE LIABLE FOR ANY DAMAGES WHATSOEVER (INCLUDING, WITHOUT LIMITATION, LOST PROFITS, BUSINESS INTERRUPTION, OR LOST INFORMATION) ARISING OUT OF THE USE OF OR INABILITY TO USE THE SOFTWARE, EVEN IF INTEL HAS BEEN ADVISED OF THE POSSIBILITY OF SUCH DAMAGES. SOME JURISDICTIONS PROHIBIT EXCLUSION OR LIMITATION OF LIABILITY FOR IMPLIED WARRANTIES OR CONSEQUENTIAL OR INCIDENTAL DAMAGES, SO THE ABOVE LIMITATION MAY NOT APPLY TO YOU. YOU MAY ALSO HAVE OTHER LEGAL RIGHTS THAT VARY FROM JURISDICTION TO JURISDICTION.

**TERMINATION OF THIS AGREEMENT.** Intel may terminate this Agreement at any time if you violate its terms. Upon termination, you will immediately destroy the Software or return all copies of the Software to Intel.

## Year 2000 Statement

An Intel product, when used in accordance with its associated documentation, is “Year 2000 Capable” when, upon installation, it accurately stores, displays, processes, provides, and/or receives date data from, into, and between the twentieth and twenty-first centuries, including leap year calculations, provided that all other technology used in combination with said product properly exchanges date data with it. See <http://www.intel.com/support/year2000> for more information.



# Intel® Automated Customer Support

You can reach Intel's automated support services 24 hours a day, every day at no charge. The services contain the most up-to-date information about Intel products. You can access installation instructions, troubleshooting information, and general product information.

## Web and Internet Sites

- Support: <http://support.intel.com>
- Network Products: <http://www.intel.com/network>
- Corporate: <http://www.intel.com>
- FTP Host: [download.intel.com](http://download.intel.com)
- FTP Directory: [/support/etherexpress/](http://support/etherexpress/)

## Customer Support Technicians

*US and Canada: 1-916-377-7000 (7:00 - 17:00 M-F Pacific Time)*

Worldwide access: Intel has technical support centers worldwide. Many of the centers are staffed by technicians who speak the local languages. For a list of all Intel support centers, the telephone numbers, and the times they are open, download document 9089 from one of the automated services.

