



939A8X-M

User Manual

Version 1.1

Published July 2006

Copyright©2006 ASRock INC. All rights reserved.

Copyright Notice:

No part of this manual may be reproduced, transcribed, transmitted, or translated in any language, in any form or by any means, except duplication of documentation by the purchaser for backup purpose, without written consent of ASRock Inc.

Products and corporate names appearing in this manual may or may not be registered trademarks or copyrights of their respective companies, and are used only for identification or explanation and to the owners' benefit, without intent to infringe.

Disclaimer:

Specifications and information contained in this manual are furnished for informational use only and subject to change without notice, and should not be constructed as a commitment by ASRock. ASRock assumes no responsibility for any errors or omissions that may appear in this manual.

With respect to the contents of this manual, ASRock does not provide warranty of any kind, either expressed or implied, including but not limited to the implied warranties or conditions of merchantability or fitness for a particular purpose.

In no event shall ASRock, its directors, officers, employees, or agents be liable for any indirect, special, incidental, or consequential damages (including damages for loss of profits, loss of business, loss of data, interruption of business and the like), even if ASRock has been advised of the possibility of such damages arising from any defect or error in the manual or product.



This device complies with Part 15 of the FCC Rules. Operation is subject to the following two conditions:

- (1) this device may not cause harmful interference, and
- (2) this device must accept any interference received, including interference that may cause undesired operation.

ASRock Website: <http://www.asrock.com>

Contents

1. Introduction	5
1.1 Package Contents	5
1.2 Specifications	6
1.3 Motherboard Layout	8
1.4 ASRock 8CH I/O	9
2. Installation	10
Pre-installation Precautions	10
2.1 CPU Installation	11
2.2 Installation of CPU Fan and Heatsink	11
2.3 Installation of Memory Modules (DIMM)	12
2.4 Expansion Slots (PCI and AGP Slots)	14
2.5 Jumpers Setup	15
2.6 Onboard Headers and Connectors	16
2.7 Serial ATA (SATA) Hard Disks Installation	19
2.8 Making a SATA Driver Diskette For SATA Operation in "RAID" Mode	20
2.9 SATA Operating in "non-RAID" Mode	20
3. BIOS SETUP UTILITY	21
3.1 Introduction	21
3.1.1 BIOS Menu Bar	21
3.1.2 Navigation Keys	22
3.2 Main Screen	22
3.3 Advanced Screen	23
3.3.1 CPU Configuration	23
3.3.2 Chipset Configuration	26
3.3.3 ACPI Configuration	27
3.3.4 IDE Configuration	28
3.3.5 PCIPnP Configuration	30
3.3.6 Floppy Configuration	31
3.3.7 Super IO Configuration	31
3.3.8 USB Configuration	33
3.4 Hardware Health Event Monitoring Screen	33
3.5 Boot Screen	33
3.5.1 Boot Settings Configuration	34
3.6 Security Screen	34
3.7 Exit Screen	35

4. Software Support	36
4.1 Install Operating System	36
4.2 Support CD Information	36
4.2.1 Running Support CD	36
4.2.2 Drivers Menu	36
4.2.3 Utilities Menu	36
4.2.4 Contact Information	36
APPENDIX: AMD's Cool 'n' Quiet™ Technology.....	37

1. Introduction

Thank you for purchasing ASRock **939A8X-M** motherboard, a reliable motherboard produced under ASRock's consistently stringent quality control. It delivers excellent performance with robust design conforming to ASRock's commitment to quality and endurance.

In this manual, chapter 1 and 2 contain introduction of the motherboard and step-by-step guide to the hardware installation. Chapter 3 and 4 contain the configuration guide to BIOS setup and information of the Support CD.



Because the motherboard specifications and the BIOS software might be updated, the content of this manual will be subject to change without notice. In case any modifications of this manual occur, the updated version will be available on ASRock website without further notice. You may find the latest memory and CPU support lists on ASRock website as well. ASRock website <http://www.asrock.com>

1.1 Package Contents

- 1 x ASRock **939A8X-M** Motherboard
(Micro ATX Form Factor: 9.6-in x 8.6-in, 24.4 cm x 21.8 cm)
- 1 x ASRock **939A8X-M** Quick Installation Guide
- 1 x ASRock **939A8X-M** Support CD
- 1 x Ultra ATA 66/100/133 IDE Ribbon Cable (80-conductor)
- 1 x 3.5-in Floppy Drive Ribbon Cable
- 1 x Serial ATA (SATA) Data Cable
- 1 x Serial ATA (SATA) HDD Power Cable (Optional)
- 1 x ASRock 8CH I/O

1.2 Specifications

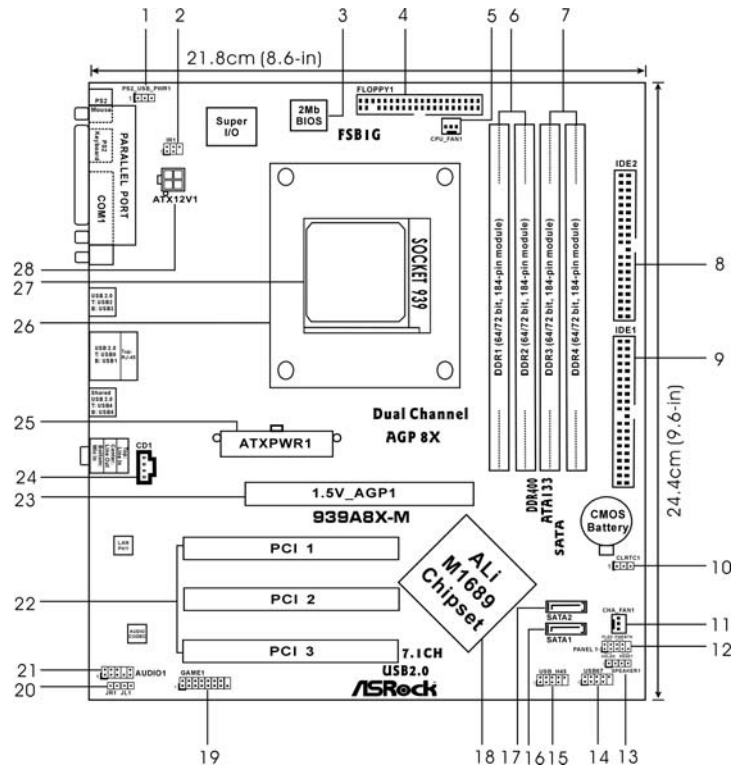
Platform:	Micro ATX Form Factor: 9.6-in x 8.6-in, 24.4 cm x 21.8 cm
CPU:	939-Pin Socket Supporting AMD Athlon™ 64 / 64FX Processor Supports AMD's Cool 'n' Quiet™ Technology (see CAUTION 1)
Chipset:	Bridge: ULi (ALi) M1689, FSB @ 1000 MHz
Memory:	4 x DDR DIMM Slots: 4 DIMMs support PC3200 (DDR 400) / PC2700 (DDR 333) / PC2100 (DDR 266), Max. 4GB
IDE:	IDE1: ATA 133 / Ultra DMA Mode 6 IDE2: ATA 133 / Ultra DMA Mode 6 Support up to 4 IDE devices
Serial ATA:	2 x SATA connectors Support 1.5Gb/s data transfer rate
Floppy Port:	Supports up to 2 floppy disk drives
Audio:	7.1 channels AC'97 Audio
LAN:	Speed: 802.3u (10/100 Ethernet), supports Wake-On-LAN
Hardware Monitor:	CPU temperature sensing Motherboard temperature sensing CPU overheat shutdown to protect CPU life (ASRock U-COP)(see CAUTION 2) CPU fan tachometer Chassis fan tachometer Voltage monitoring: +12V, +5V, +3.3V, Vcore
PCI Slots:	3 x PCI slots, PCI specification 2.3
AGP Slot:	1 x AGP slot Supports 1.5V, 8X / 4X AGP card (see CAUTION 3)
USB 2.0:	8 x USB 2.0 ports: 4 ready-to-use USB 2.0 ports on the I/O panel, plus 2 on-board headers supporting 4 extra USB 2.0 ports (see CAUTION 4)
ASRock 8CH I/O:	1 PS/2 Mouse Port, 1 PS/2 Keyboard Port 1 Serial Port: COM1 1 Parallel Port (ECP/EPP Support) 4 Ready-to-Use USB 2.0 Ports 1 RJ-45 Port Audio Jack: Side Speaker / Rear Speaker / Central/Bass / Line In / Front Speaker / Microphone (see CAUTION 5)

BIOS:	AMI BIOS Supports "Plug and Play" ACPI 1.1 compliance wake up events SMBIOS 2.3.1 support CPU frequency stepless control (only for advanced users' reference, see CAUTION 6)
OS:	Microsoft® Windows® 98SE / ME / 2000 / XP compliant

CAUTION!

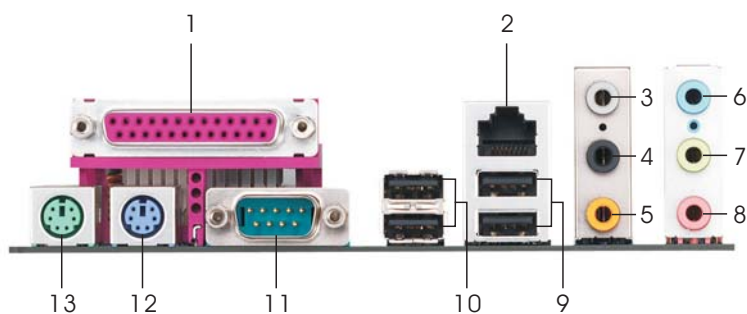
1. For power-saving sake, it is strongly recommended to enable AMD's Cool 'n' Quiet™ technology under Windows system. See APPENDIX on page 37 to enable AMD's Cool 'n' Quiet™ technology.
2. While CPU overheat is detected, the system will automatically shutdown. Before you resume the system, please check if the CPU fan on the motherboard functions properly and unplug the power cord, then plug it back again. To improve heat dissipation, remember to spray thermal grease between the CPU and the heatsink when you install the PC system.
3. Do NOT use a 3.3V AGP card on the AGP slot of this motherboard!
It may cause permanent damage!
4. Power Management for USB 2.0 works fine under Microsoft® Windows® XP SP1 / 2000 SP4. It may not work properly under Microsoft® Windows® 98 / ME.
5. For microphone input, this motherboard supports mono modes. For audio output, this motherboard supports 2-channel, 4-channel, 6-channel, and 8-channel modes. Please check the table on page 9 for proper connection.
6. Although this motherboard offers stepless control, it is not recommended to perform over-clocking. Frequencies other than the recommended CPU FSB frequencies may cause the instability of the system or damage the CPU.

1.3 Motherboard Layout



- | | |
|---|---|
| 1 PS2_USB_PWR1 Jumper | 14 USB 2.0 Header (USB67, Blue) |
| 2 Infrared Module Header (IR1) | 15 USB 2.0 Header (USB_H45, Blue) |
| 3 Flash Memory | 16 Primary Serial ATA Connector (SATA1) |
| 4 Floppy Connector (FLOPPY1) | 17 Secondary Serial ATA Connector (SATA2) |
| 5 CPU Fan Connector (CPU_FAN1) | 18 Bridge Controller |
| 6 2 x 184-pin DDR DIMM Slots
(Dual Channel A: DDR1, DDR2; Blue) | 19 Game Port Header (GAME1) |
| 7 2 x 184-pin DDR DIMM Slots
(Dual Channel B: DDR3, DDR4; Black) | 20 JR1 Jumper / JL1 Jumper |
| 8 Secondary IDE Connector (IDE2, Black) | 21 Front Panel Audio Header (AUDIO1) |
| 9 Primary IDE Connector (IDE1, Blue) | 22 PCI Slots (PCI1 - 3) |
| 10 Clear CMOS Jumper (CLRTC1) | 23 AGP Slot (1.5V_AGP1) |
| 11 Chassis Fan Connector (CHA_FAN1) | 24 Internal Audio Connector: CD1 (Black) |
| 12 System Panel Header (PANEL1) | 25 ATX Power Connector (ATXPWR1) |
| 13 Chassis Speaker Header (SPEAKER 1) | 26 CPU Heatsink Retention Module |
| | 27 939-Pin CPU Socket |
| | 28 ATX 12V Connector (ATX12V1) |

1.4 ASRock 8CH I/O



- | | |
|---------------------------|--------------------------------|
| 1 Parallel Port | 8 Microphone (Pink) |
| 2 RJ-45 Port | 9 USB 2.0 Ports (USB01) |
| 3 Side Speaker (Gray) | 10 USB 2.0 Ports (USB23) |
| 4 Rear Speaker (Black) | 11 Serial Port: COM1 |
| 5 Central / Bass (Orange) | 12 PS/2 Keyboard Port (Purple) |
| 6 Line In (Light Blue) | 13 PS/2 Mouse Port (Green) |
| *7 Front Speaker (Lime) | |

* If you use 2-channel speaker, please connect the speaker's plug into "Front Speaker Jack". See the table below for connection details in accordance with the type of speaker you use.

TABLE for Audio Output Connection

Audio Output Channels	Front Speaker (No. 7)	Rear Speaker (No. 4)	Central / Bass (No. 5)	Side Speaker (No. 3)
2	√	--	--	--
4	√	√	--	--
6	√	√	√	--
8	√	√	√	√

2. Installation

939A8X-M is a Micro ATX form factor (9.6-in x 8.6-in, 24.4 cm x 21.8 cm) motherboard. Before you install the motherboard, study the configuration of your chassis to ensure that the motherboard fits into it.

Pre-installation Precautions

Take note of the following precautions before you install motherboard components or change any motherboard settings.



Before you install or remove any component, ensure that the power is switched off or the power cord is detached from the power supply. Failure to do so may cause severe damage to the motherboard, peripherals, and/or components.

1. Unplug the power cord from the wall socket before touching any component.
2. To avoid damaging the motherboard components due to static electricity, **NEVER** place your motherboard directly on the carpet or the like. Also remember to use a grounded wrist strap or touch a safety grounded object before you handle components.
3. Hold components by the edges and do not touch the ICs.
4. Whenever you uninstall any component, place it on a grounded anti-static pad or in the bag that comes with the component.
5. When placing screws into the screw holes to secure the motherboard to the chassis, please do not over-tighten the screws! Doing so may damage the motherboard.

2.1 CPU Installation

- Step 1. Unlock the socket by lifting the lever up to a 90° angle.
- Step 2. Position the CPU directly above the socket such that the CPU corner with the golden triangle matches the socket corner with a small triangle.
- Step 3. Carefully insert the CPU into the socket until it fits in place.

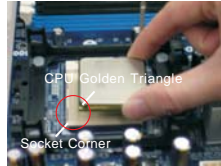


The CPU fits only in one correct orientation. DO NOT force the CPU into the socket to avoid bending of the pins.

- Step 4. When the CPU is in place, press it firmly on the socket while you push down the socket lever to secure the CPU. The lever clicks on the side tab to indicate that it is locked.



STEP 1:
Lift Up The Socket Lever



STEP 2 / STEP 3:
Match The CPU Golden Triangle
To The Socket Corner



STEP 4:
Push Down And Lock
The Socket Lever

2.2 Installation of CPU Fan and Heatsink

After you install the CPU into this motherboard, it is necessary to install a larger heatsink and cooling fan to dissipate heat. You also need to spray thermal grease between the CPU and the heatsink to improve heat dissipation. Make sure that the CPU and the heatsink are securely fastened and in good contact with each other. Then connect the CPU fan to the CPU FAN connector (CPU_FAN1, see Page 8, No. 5). For proper installation, please kindly refer to the instruction manuals of the CPU fan and the heatsink.

2.3 Installation of Memory Modules (DIMM)

939A8X-M motherboard provides four 184-pin DDR (Double Data Rate) DIMM slots, and supports Dual Channel Memory Technology. For dual channel configuration, you always need to install **identical** (the same brand, speed, size and chip-type) DDR DIMM pair in the slots of the same color. In other words, you have to install **identical** DDR DIMM pair in **Dual Channel A** (DDR1 and DDR2; Blue slots; see p.8 No. 6) or **identical** DDR DIMM pair in **Dual Channel B** (DDR3 and DDR4; Black slots; see p.8 No. 7), so that Dual Channel Memory Technology can be activated. This motherboard also allows you to install four DDR DIMMs for dual channel configuration, and please install **identical** DDR DIMMs in all four slots. You may refer to the Dual Channel Memory Configuration Table below.

Dual Channel Memory Configurations

	DDR1 (Blue Slot)	DDR2 (Blue Slot)	DDR3 (Black Slot)	DDR4 (Black Slot)
(1)	Populated	Populated	-	-
(2)	-	-	Populated	Populated
(3)*	Populated	Populated	Populated	Populated

* For the configuration (3), please install **identical** DDR DIMMs in all four slots.

* It is recommended to install DDR3 and DDR4 (black slots) first. Then to install in DDR1 and DDR2. (That is, to populate DDR DIMM from the far side of CPU towards to the near side of CPU.)



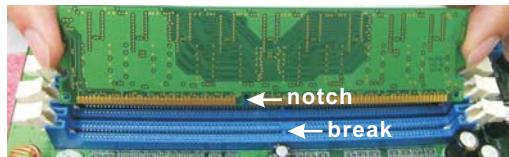
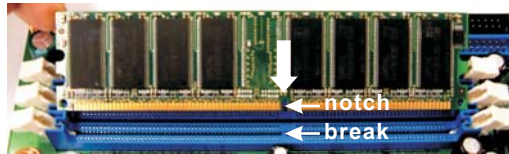
1. If you want to install two different memory modules, for optimal compatibility and reliability, it is recommended to install them in the slots of different color. In other words, install them either in DDR1 and DDR3.
2. If only one memory module or three memory modules are installed in the DDR DIMM slots on this motherboard, it is unable to activate the Dual Channel Memory Technology.
3. If a pair of memory modules is NOT installed in the same Dual Channel, for example, installing a pair of memory modules in DDR1 and DDR3, it is unable to activate the Dual Channel Memory Technology .

Installing a DIMM



Please make sure to disconnect power supply before adding or removing DIMMs or the system components.

- Step 1. Unlock a DIMM slot by pressing the retaining clips outward.
Step 2. Align a DIMM on the slot such that the notch on the DIMM matches the break on the slot.



The DIMM only fits in one correct orientation. It will cause permanent damage to the motherboard and the DIMM if you force the DIMM into the slot at incorrect orientation.

- Step 3. Firmly insert the DIMM into the slot until the retaining clips at both ends fully snap back in place and the DIMM is properly seated.

2.4 Expansion Slots (PCI and AGP Slots)

There are 3 PCI slots and 1 AGP slot on **939A8X-M** motherboard.

PCI Slots: PCI slots are used to install expansion cards that have the 32-bit PCI interface.

AGP slot: The AGP slot is used to install a graphics card. The ASRock AGP slot has a special design of clasp that can securely fasten the inserted graphics card.



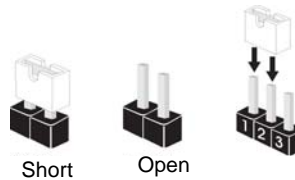
Please do NOT use a 3.3V AGP card on the AGP slot of this motherboard! It may cause permanent damage! For the voltage information of your AGP card, please check with the AGP card vendors.

Installing an expansion card

- Step 1. Before installing the expansion card, please make sure that the power supply is switched off or the power cord is unplugged. Please read the documentation of the expansion card and make necessary hardware settings for the card before you start the installation.
- Step 2. Remove the system unit cover (if your motherboard is already installed in a chassis).
- Step 3. Remove the bracket facing the slot that you intend to use. Keep the screws for later use.
- Step 4. Align the card connector with the slot and press firmly until the card is completely seated on the slot.
- Step 5. Fasten the card to the chassis with screws.
- Step 6. Replace the system cover.

2.5 Jumpers Setup

The illustration shows how jumpers are setup. When the jumper cap is placed on pins, the jumper is "Short". If no jumper cap is placed on pins, the jumper is "Open". The illustration shows a 3-pin jumper whose pin1 and pin2 are "Short" when jumper cap is placed on these 2 pins.



Jumper	Setting	
PS2_USB_PWR1 (see p.8, No. 1)		Short pin2, pin3 to enable +5VSB (standby) for PS/2 or USB wake up events.
<p>Note: To select +5VSB, it requires 2 Amp and higher standby current provided by power supply.</p>		

JR1 / JL1 Jumpers (see p.8, No. 20)		
<p>Note: If JR1 and JL1 Jumpers are short, both the front panel and the rear panel audio connectors can work.</p>		

Clear CMOS (CLRTC1) (see p.8, No. 10)		
<p>Note: CLRTC1 allows you to clear the data in CMOS. The data in CMOS includes system setup information such as system password, date, time, and system setup parameters. To clear and reset the system parameters to default setup, please turn off the computer and unplug the power cord from the power supply. After waiting for 15 seconds, use a jumper cap to short pin2 and pin3 on CLRTC1 for 5 seconds. However, please do not clear the CMOS right after you update the BIOS. If you need to clear the CMOS when you just finish updating the BIOS, you must boot up the system first, and then shut it down before you do the clear-CMOS action.</p>		

2.6 Onboard Headers and Connectors



Onboard headers and connectors are NOT jumpers. Do NOT place jumper caps over these headers and connectors. Placing jumper caps over the headers and connectors will cause permanent damage of the motherboard!

FDD Connector
(33-pin FLOPPY1)
(see p.8, No. 4)



Note: Make sure the red-striped side of the cable is plugged into Pin1 side of the connector.

Primary IDE Connector (Blue)
(39-pin IDE1, see p.8, No. 9)

Secondary IDE Connector (Black)
(39-pin IDE2, see p.8, No. 8)



connect the blue end
to the motherboard



connect the black end
to the IDE devices

80-conductor ATA 66/100/133 cable

Note: If you use only one IDE device on this motherboard, please set the IDE device as "Master". Please refer to the instruction of your IDE device vendor for the details. Besides, to optimize compatibility and performance, please connect your hard disk drive to the primary IDE connector (IDE1, blue) and CD-ROM to the secondary IDE connector (IDE2, black).

Serial ATA Connectors
(SATA1: see p.8, No. 16)
(SATA2: see p.8, No. 17)



SATA2



SATA1

These two Serial ATA (SATA) connectors support SATA data cables for internal storage devices. The current SATA interface allows up to 1.5 Gb/s data transfer rate.

**Serial ATA (SATA)
Data Cable**



Either end of the SATA data cable can be connected to the SATA hard disk or the SATA connector on the motherboard.

**Serial ATA (SATA)
Power Cable**

(Optional)

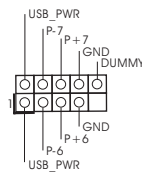


Please connect the black end of SATA power cable to the power connector on the drive. Then connect the white end of SATA power cable to the power connector of the power supply.

USB 2.0 Header

(9-pin USB67)

(see p.8, No. 14)

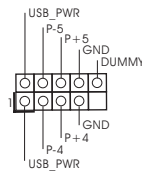


ASRock 8CH I/O provides you 4 ready-to-use USB 2.0 ports on the rear panel. If the rear USB ports are not sufficient, this USB 2.0 header is available to support 2 extra USB 2.0 ports.

USB 2.0 Header

(9-pin USB_H45)

(see p.8, No. 15)

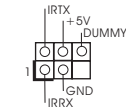


ASRock 8CH I/O™ provides you 4 ready-to-use USB 2.0 ports on the rear panel. If the rear USB ports are not sufficient, this USB 2.0 header is available to support 2 extra USB 2.0 ports.

Infrared Module Header

(5-pin IR1)

(see p.8, No. 2)

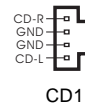


This header supports an optional wireless transmitting and receiving infrared module.

Internal Audio Connectors

(4-pin CD1)

(CD1: see p.8, No. 24)

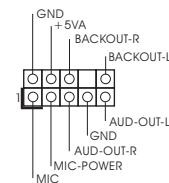


These connectors allow you to receive stereo audio input from sound sources such as a CD-ROM, DVD-ROM, TV tuner card, or MPEG card.

Front Panel Audio Header

(9-pin AUDIO1)

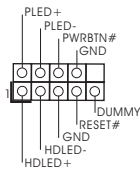
(see p.8, No. 21)



This is an interface for the front panel audio cable that allows convenient connection and control of audio devices.

System Panel Connector

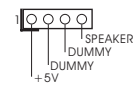
(9-pin PANEL1)
(see p.8 item 12)



This connector accommodates several system front panel functions.

Chassis Speaker Connector

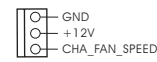
pin SPEAKER 1)
(see p.8 item 13)



Please connect the chassis (4 - speaker to this connector.

Chassis Fan Connector

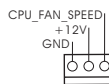
(3-pin CHA_FAN1)
(see p.8 item 11)



Please connect a chassis fan cable to this connector and match the black wire to the ground pin.

CPU Fan Connector

(3-pin CPU_FAN1)
(see p.8 item 5)



Please connect a CPU fan cable to this connector and match the black wire to the ground pin.

ATX Power Connector

(20-pin ATXPWR1)
(see p.8 item 25)



Please connect an ATX power supply to this connector.

ATX 12V Connector

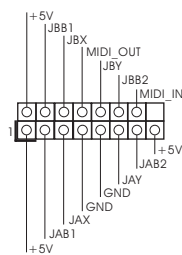
(4-pin ATX12V1)
(see p.8 item 28)



Please note that it is necessary to connect a power supply with ATX 12V plug to this connector so that it can provides sufficient power. Failing to do so will cause the failure to power up.

Game Connector

(15-pin GAME1)
(see p.8 item 19)



Connect a Game cable to this connector if the Game port bracket is installed.

2.7 Serial ATA (SATA) Hard Disks Installation

This motherboard supports Serial ATA (SATA) hard disks and RAID functions. This section will guide you to install the SATA hard disks.

STEP 1: Install the SATA hard disks into the drive bays of your chassis.

STEP 2: Connect the SATA power cable to the SATA hard disk.

STEP 3: Connect one end of the SATA data cable to the motherboard's SATA connector.

STEP 4: Connect the other end of the SATA data cable to the SATA hard disk.



1. If you plan to use RAID 0, RAID 1, or JBOD functions on SATA, SATA HDDs must be operated in "RAID" mode.
2. "RAID" and "non-RAID" mode are options under "SATA Operation Mode" in BIOS setup. Please refer to page 28 for details. They need different drivers during actual operation.

2.8 Making a SATA Driver Diskette For SATA Operation in "RAID" Mode

If you want to install Windows 2000, Windows XP, or Windows XP 64-bit OS on your SATA HDDs, you will need to make a SATA driver before you start the OS installation.

- STEP 1: Insert the ASRock Support CD into your optical drive to boot your system. (Do NOT insert any floppy diskette into the floppy drive at this moment!)
- STEP 2: During POST at the beginning of system boot-up, press <F11> key, and then a window for boot devices selection appears. Please select CD-ROM as the boot device.
- STEP 3: When you see the message on the screen, "Do you want to generate Serial ATA driver diskette [YN]?", press <Y>.
- STEP 4: Then you will see these messages,
Please insert a diskette into the floppy drive.
WARNING! Formatting the floppy diskette will lose ALL data in it!
Start to format and copy files [YN]?
Please insert a floppy diskette into the floppy drive, and press <Y>.
- STEP 5: The system will start to format the floppy diskette and copy SATA drivers into the floppy diskette.

Once you have the SATA driver diskette ready, you may start to install Windows 2000 / Windows XP / Windows XP 64-bit on your system directly without setting the RAID configuration on your system, or you may start to use "ALi RAID BIOS Setup Utility" to set RAID 0 / RAID 1 / JBOD configuration before you install the OS. Before you start to configure the RAID function, you need to check the installation guide in the Support CD for proper configuration. Please find the document, "Guide to SATA Hard Disks Installation and RAID Configuration", at the following path in the Support CD:

.. \ RAID_SETUP_GUIDE \ English.PDF

2.9 SATA Operating in "non-RAID" Mode

If you want to install Windows 2000, Windows XP, or Windows XP 64-bit OS on your SATA HDDs operating in non-RAID mode, you don't need to make a SATA driver diskette before OS installation.



Windows 98 SE and Windows ME must be installed by SATA operating in RAID mode, and you don't need to make a SATA driver diskette for these two OS before OS installation.

3. BIOS SETUP UTILITY

3.1 Introduction

This section explains how to use the BIOS SETUP UTILITY to configure your system. The Flash Memory on the motherboard stores the BIOS SETUP UTILITY. You may run the BIOS SETUP UTILITY when you start up the computer. Please press <F2> during the Power-On-Self-Test (POST) to enter the BIOS SETUP UTILITY, otherwise, POST will continue with its test routines.

If you wish to enter the BIOS SETUP UTILITY after POST, restart the system by pressing <Ctl> + <Alt> + <Delete>, or by pressing the reset button on the system chassis. You may also restart by turning the system off and then back on.



Because the BIOS software is constantly being updated, the following BIOS setup screens and descriptions are for reference purpose only, and they may not exactly match what you see on your screen.

3.1.1 BIOS Menu Bar

The top of the screen has a menu bar with the following selections:

- Main** To set up the system time/date information
- Advanced** To set up the advanced BIOS features
- H/W Monitor** To display current hardware status
- Boot** To set up the default system device to locate and load the Operating System
- Security** To set up the security features
- Exit** To exit the current screen or the BIOS SETUP UTILITY

Use <←> key or <→> key to choose among the selections on the menu bar, and then press <Enter> to get into the sub screen.

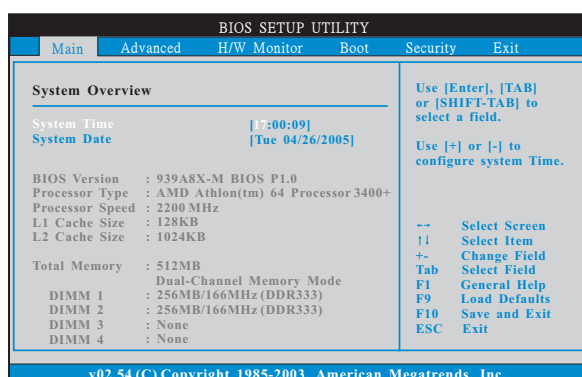
3.1.2 Navigation Keys

Please check the following table for the function description of each navigation key.

Navigation Key(s)	Function Description
← / →	Moves cursor left or right to select Screens
↑ / ↓	Moves cursor up or down to select items
+ / -	To change option for the selected items
<Enter>	To bring up the selected screen
<F1>	To display the General Help Screen
<F9>	To load optimal default values for all the settings
<F10>	To save changes and exit the BIOS SETUP UTILITY
<ESC>	To jump to the Exit Screen or exit the current screen

3.2 Main Screen

When you enter the BIOS SETUP UTILITY, the Main screen will appear and display the system overview



System Time [Hour:Minute:Second]

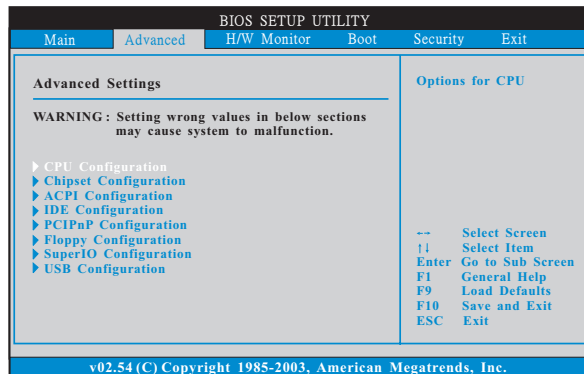
Use this item to specify the system time.

System Date [Day Month/Date/Year]

Use this item to specify the system date.

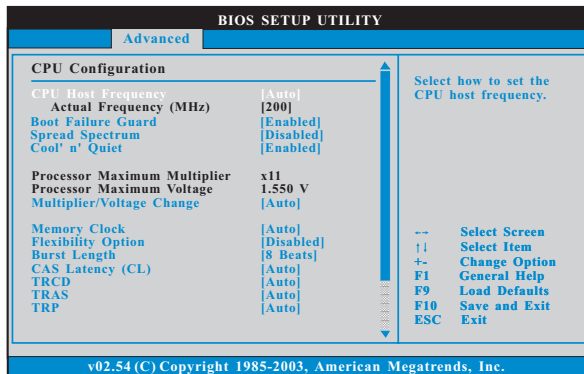
3.3 Advanced Screen

In this section, you may set the configurations for the following items: CPU Configuration, Chipset Configuration, ACPI Configuration, IDE Configuration, PCI/PnP Configuration, Floppy Configuration, SuperIO Configuration, and USB Configuration.



Setting wrong values in this section may cause the system to malfunction.

3.3.1 CPU Configuration



CPU Host Frequency

While entering setup, BIOS auto detects the present CPU host frequency of this motherboard. The actual CPU host frequency will show in the following item.

Boot Failure Guard

Enable or disable the feature of Boot Failure Guard.

Spread Spectrum

This item should always be [Disabled] for better system stability.

Cool 'n' Quiet

Use this item to enable or disable AMD's Cool 'n' Quiet™ technology.

Processor Maximum Multiplier

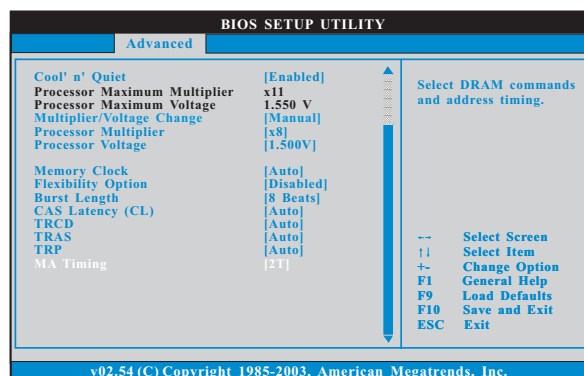
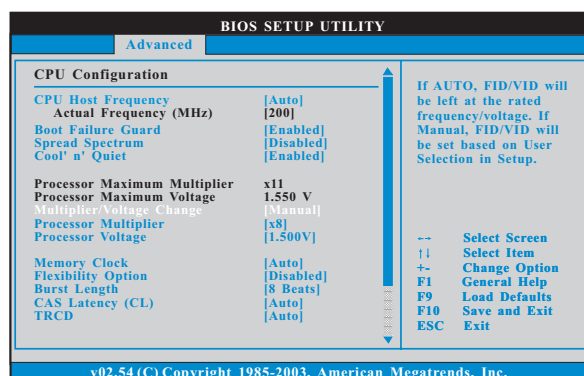
It will display Processor Maximum Multiplier for reference.

Processor Maximum Voltage

It will display Processor Maximum Voltage for reference.

Multiplier/Voltage Change

This item is set to [Auto] by default. If it is set to [Manual], you may adjust the value of Processor Multiplier and Processor Voltage. However, it is recommended to keep the default value for system stability.



Processor Multiplier

This item will show when “Multiplier/Voltage Change” is set to [Manual]; otherwise, it will be hidden. You may set the value from [x4] up to [x25] but no higher than the value of “Processor Maximum Multiplier”. For example, if the value of “Processor Maximum Multiplier” is [x11], the actual value of multiplier will be [x11] even if you set this item to a value higher than [x11]. However, for system stability, it is not recommended to adjust the value of this item.

Processor Voltage

This item will show when “Multiplier/Voltage Change” is set to [Manual]; otherwise, it will be hidden. You may set the value from [1.550V] down to [0.800V]. However, for safety and system stability, it is not recommended to adjust the value of this item.

Memory Clock

This item can be set by the code using [Auto]. You can set one of the standard values as listed: [133 MHz (DDR266)], [166 MHz (DDR333)], [200 MHz (DDR400)].

Flexibility Option

The default value of this option is [Disabled]. It will allow better tolerance for memory compatibility when it is set to [Enabled].

Burst Length

Burst length can be set to 8 or 4 beats. 64 Bit Dq must use the 4 beats.

CAS Latency (CL)

Use this item to adjust the means of memory accessing. Configuration options: [Auto], [2.0], [3.0], and [2.5].

TRCD

Use this to adjust TRCD values. Configuration options: [Auto], [2CLK], [3CLK], [4CLK], [5CLK], and [6CLK].

TRAS

Use this to adjust TRAS values. Configuration options: [Auto], [5CLK], [6CLK], [7CLK], [8CLK], [9CLK], [10CLK], [11CLK], [12CLK], [13CLK], [14CLK], and [15CLK].

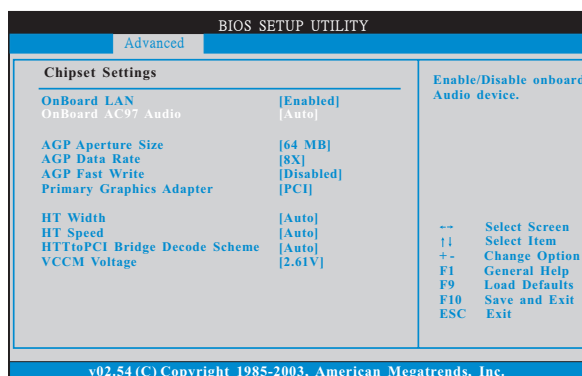
TRP

Use this to adjust TRP values. Configuration options: [Auto], [2CLK], [3CLK], [4CLK], [5CLK], and [6CLK].

MA Timing

Use this to adjust values for MA timing. Configuration options: [2T], [1T]. The default value is [2T].

3.3.2 Chipset Configuration



OnBoard AC97 Audio

Select [Auto] or [Disabled] for the onboard AC97 Audio feature.

OnBoard LAN

This allows you to enable or disable the onboard LAN feature.

AGP Aperture Size

It refers to a section of the PCI memory address range used for graphics memory. It is recommended to leave this field at the default value unless the installed AGP card's specifications requires other sizes.

AGP Data Rate

For an AGP 3.0 card, you may set AGP Data Rate between [8X] or [4X], and the default value is [8X]. For an AGP 2.0 card, you may set AGP Data Rate among [4X], [2X], and [1X], and the default value is [4X].

AGP Fast Write

Use this item to enable or disable the feature of AGP fast write protocol support.

Primary Graphics Adapter

This item will switch the PCI Bus scanning order while searching for video card. It allows you to select the type of Primary VGA in case of multiple video controllers.

HT Width

You may set the HyperTransport width as [8 Bit], [16 Bit], or [Auto]. The default value is [Auto].

HT Speed

You may set the HyperTransport speed as [Auto], [200 MHz], [400 MHz], [600 MHz], [800 MHz], or [1000 MHz]. The default value is [Auto].

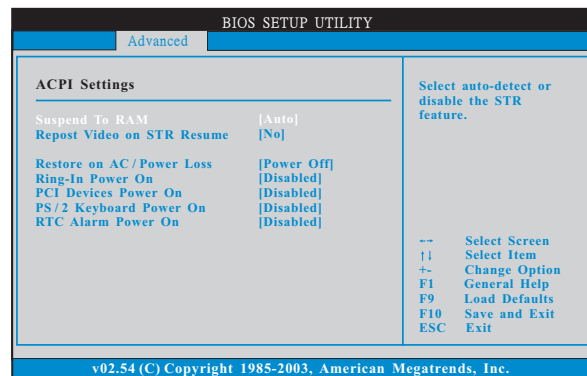
HTTtoPCI Bridge Decode Scheme

You may set the HTTtoPCI Bridge Decode Scheme as [Auto], [Positive], or [Subtractive]. The default value is [Auto].

VCCM Voltage

Use this to select VCCM voltage between [2.72V] and [2.61V].

3.3.3 ACPI Configuration



Restore on AC/Power Loss

If you set the item "Suspend to RAM" to [Auto], you may use this item to set the power state after an unexpected AC/Power loss. If [Power Off] is selected, the AC/power remains off when the power recovers. If [Power On] is selected, the AC/power resumes and the system starts to boot up when the power recovers.

Repost Video on STR Resume

This feature allows you to repost video on STR resume. It is recommended to enable this feature under Microsoft Windows 98 / ME. (STR refers to suspend to RAM.)

Ring-In Power On

Use this item to enable or disable Ring-In signals to turn on the system from the power-soft-off mode.

PCI Devices Power On

Use this item to enable or disable PCI devices to turn on the system from the power-soft-off mode.

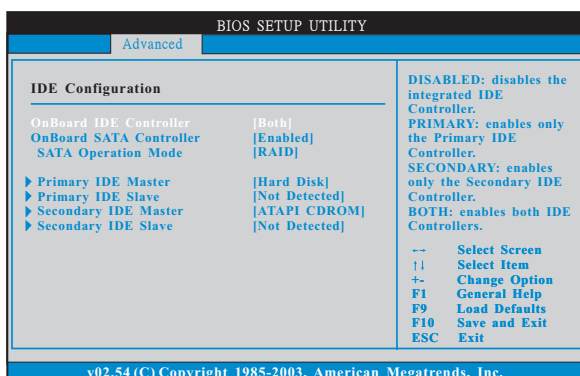
PS/2 Keyboard Power On

Use this item to enable or disable PS/2 keyboard to turn on the system from the power-soft-off mode.

RTC Alarm Power On

Use this item to enable or disable RTC (Real Time Clock) to power on the system.

3.3.4 IDE Configuration



OnBoard IDE Controller

You may enable either the primary IDE channel or the secondary IDE channel. Or you may enable both the primary and the secondary IDE channels by selecting [Both]. Set to [Disabled] will disable the both. Configuration options: [Disabled], [Primary], [Secondary], [Both].

OnBoard SATA Controller

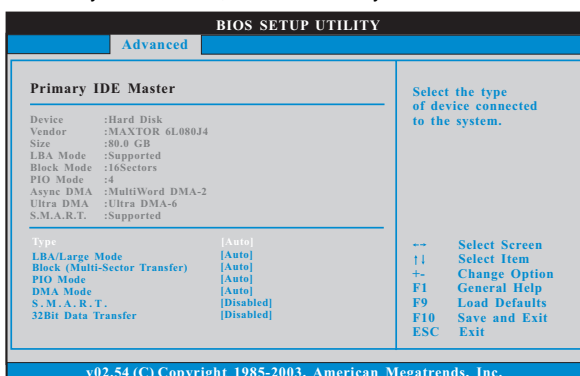
Use this item to enable or disable the "OnBoard SATA Controller" feature.

SATA Operation Mode

Use this item to adjust SATA Operation Mode. The default value of this option is [RAID]. If you don't want to operate RAID function on SATA HDDs, please select [non-RAID].

IDE Device Configuration

You may set the IDE configuration for the device that you specify. We will use the "Primary IDE Master" as the example in the following instruction, which can be applied to the configurations of "Primary IDE Slave", "Secondary IDE Master", and "Secondary IDE Slave" as well.



TYPE

Use this item to configure the type of the IDE device that you specify.
Configuration options: [Not Installed], [Auto], [CD/DVD], and [ARMD].

[Not Installed]: Select [Not Installed] to disable the use of IDE device.

[Auto]: Select [Auto] to automatically detect the hard disk drive.



After selecting the hard disk information into BIOS, use a disk utility, such as FDISK, to partition and format the new IDE hard disk drives. This is necessary so that you can write or read data from the hard disk. Make sure to set the partition of the Primary IDE hard disk drives to active.

[CD/DVD]: This is used for IDE CD/DVD drives.

[ARMD]: This is used for IDE ARMD (ATAPI Removable Media Device), such as MO.

LBA/Large Mode

Use this item to select the LBA/Large mode for a hard disk > 512 MB under DOS and Windows; for Netware and UNIX user, select [Disabled] to disable the LBA/Large mode.

Block (Multi-Sector Transfer)

The default value of this item is [Auto]. If this feature is enabled, it will enhance hard disk performance by reading or writing more data during each transfer.

PIO Mode

Use this item to set the PIO mode to enhance hard disk performance by optimizing the hard disk timing.

DMA Mode

DMA capability allows the improved transfer-speed and data-integrity for compatible IDE devices.

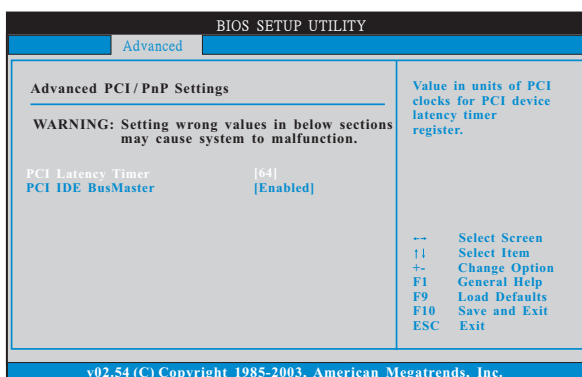
S.M.A.R.T.

Use this item to enable or disable the S.M.A.R.T. (Self-Monitoring, Analysis, and Reporting Technology) feature. Configuration options: [Disabled], [Auto], [Enabled].

32-Bit Data Transfer

Use this item to enable 32-bit access to maximize the IDE hard disk data transfer rate.

3.3.5 PCIPnP Configuration



Setting wrong values in this section may cause the system to malfunction.

PCI Latency Timer

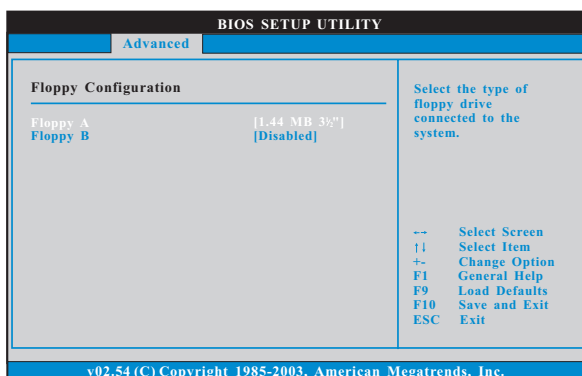
The default value is 32. It is recommended to keep the default value unless the installed PCI expansion cards' specifications require other settings.

PCI IDE BusMaster

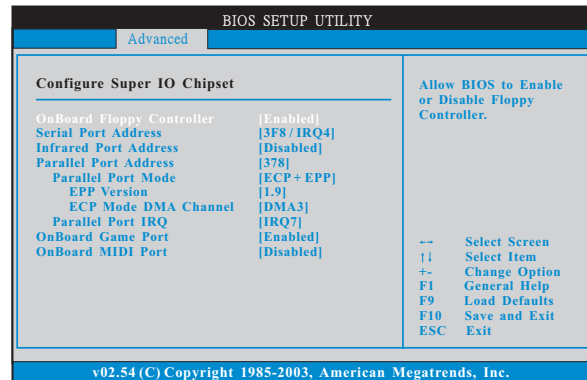
Use this item to enable or disable the PCI IDE BusMaster feature.

3.3.6 Floppy Configuration

In this section, you may configure the type of your floppy drive.



3.3.7 Super IO Configuration



OnBoard Floppy Controller

Use this item to enable or disable floppy drive controller.

Serial Port Address

Use this item to set the address for the onboard serial port or disable it.

Configuration options: [Disabled], [3F8 / IRQ4], [2F8 / IRQ3], [3E8 / IRQ4], [2E8 / IRQ3].

Infrared Port Address

Use this item to set the address for the onboard infrared port or disable it.

Configuration options: [Disabled], [2F8 / IRQ3], and [2E8 / IRQ3].

Parallel Port Address

Use this item to set the address for the onboard parallel port or disable it.

Configuration options: [Disabled], [378], and [278].

Parallel Port Mode

Use this item to set the operation mode of the parallel port. The default value is [ECP+EPP]. If this option is set to [ECP+EPP], it will show the EPP version in the following item, "EPP Version". Configuration options: [Normal], [Bi-Directional], and [ECP+EPP].

EPP Version

Use this item to set the EPP version. Configuration options: [1.9] and [1.7].

ECP Mode DMA Channel

Use this item to set the ECP mode DMA channel. Configuration options: [DMA0], [DMA1], and [DMA3].

Parallel Port IRQ

Use this item to set the IRQ for the parallel port. Configuration options: [IRQ5] and [IRQ7].

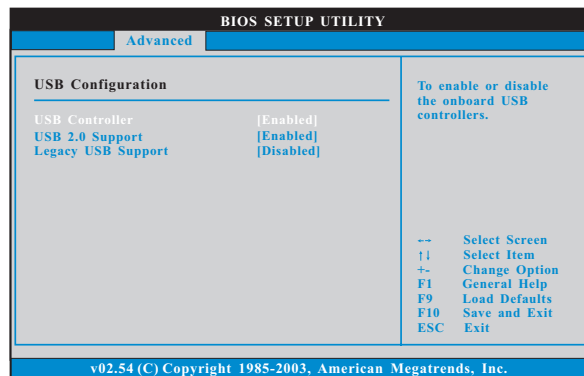
OnBoard Game Port

Use this item to enable the Game Port or disable it.

OnBoard MIDI Port

Use this item to select the address for the MIDI Port or disable it. Configuration options: [Disabled], [300], and [330].

3.3.8 USB Configuration



USB Controller

Use this item to enable or disable the use of USB controller.

USB 2.0 Support

Use this item to enable or disable the USB 2.0 support.

Legacy USB Support

Use this item to enable or disable the support to emulate legacy I/O devices such as mouse, keyboard,... etc. Or you may select [Auto] so that the system will start to auto-detect; if there is no USB device connected, "Auto" option will disable the legacy USB support.

3.4 Hardware Health Event Monitoring Screen

In this section, it allows you to monitor the status of the hardware on your system, including the parameters of the CPU temperature, motherboard temperature, CPU fan speed, chassis fan speed, and the critical voltage.

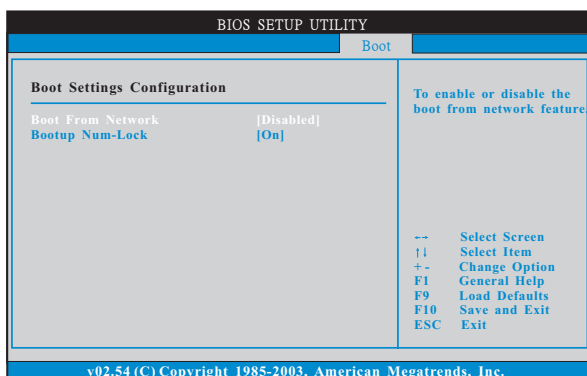
BIOS SETUP UTILITY					
Main	Advanced	H/W Monitor	Boot	Security	Exit
Hardware Health Event Monitoring					
CPU Temperature	:	37°C / 98°F			
M/B Temperature	:	31°C / 87°F			
CPU Fan Speed	:	2833 RPM			
Chassis Fan Speed	:	N/A			
Vcore	:	1.532 V			
+ 3.30V	:	3.129 V			
+ 5.00V	:	4.877 V			
+ 12.00V	:	11.741 V			
			--	Select Screen	
			F1	Select Item	
			F1	General Help	
			F9	Load Defaults	
			F10	Save and Exit	
			ESC	Exit	
v02.54 (C) Copyright 1985-2003, American Megatrends, Inc.					

3.5 Boot Screen

In this section, it will display the available devices on your system for you to configure the boot settings and the boot priority.

BIOS SETUP UTILITY					
Main	Advanced	H/W Monitor	Boot	Security	Exit
Boot Settings					
▶ Boot Settings Configuration			Configure Settings during System Boot.		
1st Boot Device	:	[1st Floppy Device]			
2nd Boot Device	:	[2nd Floppy Device]			
▶ 3rd Boot Device	:	[3rd Floppy Device]			
▶ Hard Disk Drives					
▶ Removable Drives					
▶ CD/DVD Drives					
			--	Select Screen	
			F1	Select Item	
			Enter	Go to Sub Screen	
			F1	General Help	
			F9	Load Defaults	
			F10	Save and Exit	
			ESC	Exit	
v02.54 (C) Copyright 1985-2003, American Megatrends, Inc.					

3.5.1 Boot Settings Configuration



Boot From Network

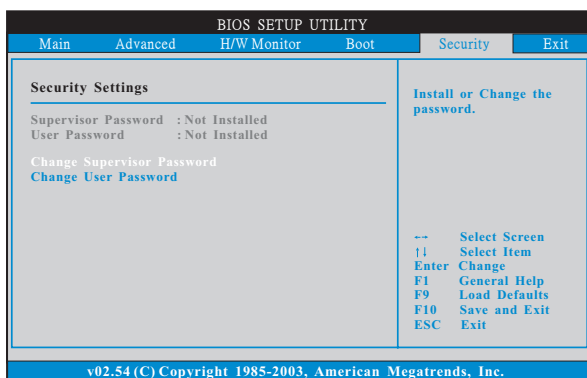
Use this item to enable or disable the Boot From Network feature.

Boot Up Num-Lock

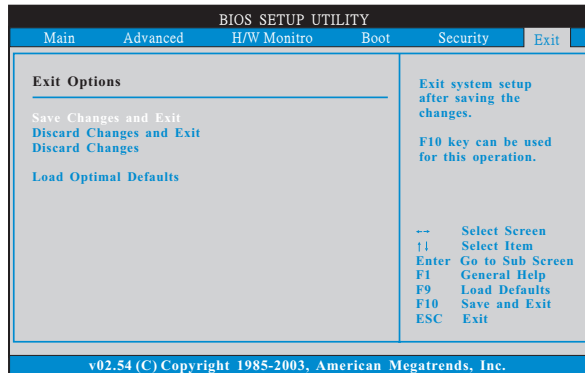
If this item is set to [On], it will automatically activate the Numeric Lock function after boot-up.

3.6 Security Screen

In this section, you may set or change the supervisor/user password for the system. For the user password, you may also clear it.



3.7 Exit Screen



Save Changes and Exit

When you select this option, it will pop-out the following message, "Save configuration changes and exit setup?" Select [OK] to save the changes and exit the BIOS SETUP UTILITY.

Discard Changes and Exit

When you select this option, it will pop-out the following message, "Discard changes and exit setup?" Select [OK] to exit the BIOS SETUP UTILITY without saving any changes.

Discard Changes

When you select this option, it will pop-out the following message, "Discard changes?" Select [OK] to discard all changes.

Load Optimal Defaults

When you select this option, it will pop-out the following message, "Load optimal defaults?" Select [OK] to load the default values for all the setup configurations.

4. Software Support

4.1 Install Operating System

This motherboard supports various Microsoft® Windows® operating systems: 98 SE / ME / 2000 / XP. Because motherboard settings and hardware options vary, use the setup procedures in this chapter for general reference only. Refer to your OS documentation for more information.

4.2 Support CD Information

The Support CD that came with the motherboard contains necessary drivers and useful utilities that enhance the motherboard features.

4.2.1 Running The Support CD

To begin using the support CD, insert the CD into your CD-ROM drive. The CD automatically displays the Main Menu if "AUTORUN" is enabled in your computer. If the Main Menu did not appear automatically, locate and double click on the file "ASSETUP.EXE" from the BIN folder in the Support CD to display the menus.

4.2.2 Drivers Menu

The Drivers Menu shows the available devices drivers including ASRock Express GbL PCI Express LAN card driver if the system detects the installed devices. Please install the necessary drivers to activate the devices.

4.2.3 Utilities Menu

The Utilities Menu shows the applications software that the motherboard supports. Click on a specific item then follow the installation wizard to install it.

4.2.4 Contact Information

If you need to contact ASRock or want to know more about ASRock, welcome to visit ASRock's website at <http://www.asrock.com>; or you may contact your dealer for further information.

APPENDIX:

AMD's Cool 'n' Quiet™ Technology

For power-saving sake, it is strongly recommended to enable AMD's Cool 'n' Quiet™ technology under Windows system. When using this feature, please make sure to install "AMD Processor Driver" from the "Support CD" first.

If you are using Windows 2000/XP operating system, please follow the instruction below to enable AMD's Cool 'n' Quiet™ technology:

1. From the Windows 2000/XP operating system, click the Start button. Select Settings, then Control Panel.
2. Switch to Classic View. (for Windows XP only)
3. Double-click the Display icon in the Control Panel then select the Screen Saver tab.
4. Click the "Power..." button. The following dialog box appears.
5. From the Power schemes combo list box, select **Minimal Power Management**.
6. Click OK to implement settings.

If you are using Windows 98SE/ME operating system, please follow the instruction below to enable AMD's Cool 'n' Quiet™ technology:

1. From the Windows 98SE/ME operating system, click the Start button. Select Settings, then Control Panel.
2. Double-click the Display icon in the Control Panel then select the Screen Saver tab.
3. From the Energy saving features of monitor group, click the "Settings..." button.
4. From the Power Options Properties dialog box, select AMD's Cool 'n' Quiet™ Technology tab.
5. Click the Performance combo list box, to select desired mode. **Automatic mode** is the recommended setting.
6. Click OK to implement settings.