
DeskNote Computer

User's Guide

900001

Preface

©Copyright 2002

All Rights Reserved.

Manual edition, January 2002

The information in this document is subject to change without prior notice in order to improve reliability, design and function and does not represent a commitment on the part of the manufacturer.

In no event will the manufacturer be liable for direct, indirect, special, incidental, or consequential damages arising out of the use or inability to use the product or documentation, even if advised of the possibility of such damages.

This document contains proprietary information protected by copyright. All rights are reserved. No part of this manual may be reproduced by any mechanical, electronic, or other means in any form without prior written permission of the manufacturer.

Trademarks

AutoCAD and Autoshade are trademarks of Autodesk, Inc. IBM, OS/2, and VGA are trademarks of International Business Machines Corp. Lotus, 1-2-3, and Symphony are trademarks of Lotus Development Corp. Windows, Word, MS-DOS, and Microsoft are trademarks of Microsoft Corp. VESA is a trademark of Video Electronics Standards Association.

Other product names mentioned herein are used for identification purposes only and may be trademarks and/or registered trademarks of their respective companies.

Limitation of Liability

While reasonable efforts have been made to ensure the accuracy of this manual, the manufacturer and distributor assume no liability resulting from errors or omissions in this manual, or from the use of the information contained herein.

This page is intentionally blank

Table of Contents

Notices

Federal Communications Commission Radio Frequency Interference Statement

NOTE: This equipment has been tested and found to comply with the limits for a Class B digital device, pursuant to Part 15 of the FCC Rules. These limits are designed to provide reasonable protection against harmful interference in a residential installation. This equipment generates, uses, and can radiate radio frequency energy and if not installed and used in accordance with the instruction manual may cause harmful interference to radio communications. However, there is no guarantee that interference will not occur in a particular installation. If this equipment does cause harmful interference to radio or television reception, which can be determined by turning the equipment off and on, the user is encouraged to try to correct the interference by one or more of the following measures:

- Reorient or relocate the receiving antenna.
- Increase the separation between the equipment and receiver.
- Connect the equipment into an outlet on a circuit different from that to which the receiver is connected.
- Consult the dealer or an experienced radio TV technician for help.

Notice:

Changes or modifications not expressly approved by the party responsible for compliance could void the user's authority to operate the equipment. Shielded interface cables and a non-shielded AC power cord must be used in order to comply with emission limits. This equipment is to be used with power supply: Rated input 100-240 Vac, 50-60 or 47-63Hz, 2.0A maximum; output 19 Vdc, 4.7A min., 90W min. There is no internal power supply.

Canadian DOC Notice For Class B Computing Devices

This Class B digital apparatus meets all requirements of the Canadian Interference - Causing Equipment Regulations. Cet appareil numérique de la classe B respecte toutes les exigences du Règlement sur le matériel brouilleur du Canada.

Safety Precautions

This section is designed to assist you in identifying potentially unsafe conditions while working with this product. Required safety features have been installed in the computer to protect you from injury. However, you should use good judgment to identify potential safety hazards:

1. Please read these safety instructions carefully.
2. Please keep this User's Manual for later reference.
3. Please disconnect this equipment from AC outlet before cleaning. Don't use liquid or sprayed detergent for cleaning. Use moisture sheet or cloth for cleaning.
4. For pluggable equipment, that the socket-outlet shall be installed near the equipment and shall be easily accessible.
5. Please keep this equipment from humidity.
6. Lay this equipment on a reliable surface when install. A drop or fall could cause injury.
7. Make sure to use the right voltage for the power source when connecting the equipment to the power outlet.
8. Place the power cord in such a way that people can not step on it. Do not place anything on top of the power cord.
9. All cautions and warnings on the equipment should be noted.
10. If the equipment is not use for a long time, disconnect the equipment from the main power outlet to avoid being damaged by transient overvoltage.
11. Never pour any liquid into the opening, this could cause fire or electrical shock.

-
12. Never open the equipment. For safety reason, the equipment should only be opened by a qualified service personnel.
 13. If on the following situations arises, get the equipment checked by a service personnel:
 - a. The Power cord or plug is damaged.
 - b. Liquid has penetrated into the equipment.
 - c. The equipment has been exposed to moisture.
 - d. The equipment has not work well or you cannot get it work according to the user's manual.
 - e. The equipment has dropped and damaged.
 - f. If the equipment has obvious sign of breakage.
 14. Do not leave this equipment in an environment unconditioned, storage temperature above 60°C (140°F), it may damage the equipment.
 15. The unit can be operated at an ambient temperature of max. 35°C.
 16. The sound pressure level at the operators position according to IEC 704-1: 1982 is equal or less than 70 dB(A).
 17. Power Cord Requirements
The power cord set used with the AC adaptor must meet the requirements of the country where you use the AC adaptor, whether it is 100-120 or 200-240 Vac. The following information explains the requirements for power cord set selection.
 - The cord set must be approved for the country in which it is used.
 - The appliance coupler must have a configuration for mating with a CEE22/EN6032/IEC 320 appliance inlet.
 - A. For U.S. and Canada:
 - The cord set must be UL Listed and CSA Certified.
 - The minimum specifications for the flexible cord are No. 18 AWG.
 - B. For Japan:

-
- All components of the cord set must bear a “ T ” mark and registration number in accordance with the Japanese Dentori Law.
 - The minimum specifications for the flexible cord are .75m² conductors.
- C. For Other Countries:
- The cord set fittings must bear the certification mark of the agency responsible for evaluation in a specific country.
 - The flexible cord must be of a HAR (harmonized) type H05W-F.
 - The cord set must have a current capacity of at least 2.5 Amperes and voltage rating of 125 or 250 Vac.
18. When using your telephone equipment, basic safety precautions should always be followed to reduce the risk of fire, electric shock and injury to persons. These precautions includes the following:
1. Do not use this product near water, for example, near a bathtub, wash bowl, kitchen sink or laundry tub, in a wet basement or near a swimming pool.
 2. Avoid using a telephone (other than a cordless type) during an electrical storm. There may be a remote risk of electric shock from lightning.
 3. Do not use the telephone to report a gas leak in the vicinity of the leak.
 4. Use only the power cord indicated in this manual.

Wichtige Sicherheitshinweise

1. Bitte lesen Sie diese Hinweis sorgfältig durch.
2. Heben Sie diese Anleitung für den späteren Gebrauch auf.
3. Vor jedem Reinigen ist das Gerät vom Stromnetz zu trennen. Versenden Sie Keine Flüssig- oder Aerosolreiniger. Am besten eignet sich ein angefeuchtetes Tuch zur Reinigung.
4. Die Netzanschlußsteckdose soll nahe dem Gerät angebracht und leicht zugänglich sein.

-
5. Das Gerät ist vor Feuchtigkeit zu schützen.
 6. Bei der Aufstellung des Gerätes ist auf sicheren Stand zu achten. Ein Kippen oder Fallen könnte Beschädigungen hervorrufen.
 7. Beachten Sie beim Anschluß an das Stromnet die Anschlußwerte.
 8. Verlegen Sie die Netzanschlußleitung so, daß niemand darüber fallen kann. Es sollte auch nichts auf der Leitung abgestellt werden.
 9. Alle Hinweise und Warnungen, die sich am Gerät befinden, sind zu beachten.
 10. Wird das Gerät über einen längeren Zeitraum nicht benutzt, sollten Sie es vom Stromnetz trennen. Somit wird im Falle einer Überspannung eine Beschädigung vermieden.
 11. Durch die Lüftungsöffnungen dürfen niemals Gegenstände oder Flüssigkeiten in das Gerät gelangen. Dies könnte einen Brand bzw. Elektrischen Schlag auslösen.
 12. Öffnen Sie niemals das Gerät. Das Gerät darf aus Gründen der elektrischen Sicherheit nur von autorisiertem Servicepersonal geöffnet werden.
 13. Wenn folgende Situationen auftreten ist das Gerät vom Stromnetz zu trennen und von einer qualifizierten Servicestelle zu Überprüfung:
 14. Netzlabel oder Netzstecker sind beschädigt.
 15. Flüssigkeit ist in das Gerät eingedrungen.
 16. Das Gerät war Feuchtigkeit ausgesetzt.
 17. Wenn das Gerät nicht der Bedienungsanleitung entsprechend funktioniert oder Sie mit Hilfe dieser Anleitung keine Verbesserung erzielen.
 18. Das Gerät ist gefallen und/oder das Gehäuse ist beschädigt.
 19. Wenn das Gerät deutliche Anzeichen eines Defektes aufweist.
 20. VORSICHT: Explosionsgefahr bei unsachgemäßen Austausch der Batterie. Ersatz nur durch denselben oder einem vom Hersteller empfohlenem ähnlichen Typ. Entsorgung gebrauchter Batterien nach Angaben des Herstellers.
 21. Dieses Schaltnetzteil kann bis zu einer Außentemperatur von

maximal 35°C.

22. Die Ausgangswerte dürfen nicht die auf dem Label angegebenen Werte überschreiten.

23. Anforderungen an das Stromkabel

Das Kabel-Set, das an das Netzteil angeschlossen wird, muss den Anforderungen des Landes, in dem Sie das Netzteil einsetzen, genügen, je nachdem, ob die Netzspannung 100-120 oder 200-240V Wechselspannung beträgt.

- Das Kabel-Set muss für das Land, in dem es eingesetzt wird, zugelassen sein.
- Der Gerätestecker des Kabels muss in eine CEE22/ EN603/ IEC 320 Buchse passen.

A. Für die USA und Kanada:

- Das Kabel-Set muss UL-gelistet und CSA zertifiziert sein.
- Die Minimalanforderungen für das Kabel entsprechen No. 18 AWG.

B. Für Japan:

- Alle Teile des Kabel-Sets müssen entsprechend dem japanischen Dentori Law mit einem "T"-Symbol markiert sein
- Die Minimalanforderungen für das Kabel sind .75m m^2 Leiter.

C. Für andere Länder:

- Die Zubehörteile des Kabel-Sets müssen das Prüfsiegel derjenigen Stelle, die in dem jeweiligen Land für die Sicherheitsprüfung zuständig ist, tragen.
- Das Kabel muss vom HAR (harmonisierten) Typ H05W-F sein.
- Das Kabel-Set muss eine Stromkapazität von mindestens 2,5 Ampere haben und Spannungen von 125 oder 250 V Wechselstrom gestatten.

Personal Inventory

This DeskNote computer system is designed for years of productive and pleasurable computing. Use this section to keep notes about details of your purchase. Update this section when you add new options.

Date of Purchase:

Dealer's Name:

Phone:

Address:

E-Mail Address:

WWW Site:

Serial Number:

CPU Type:

Hard Disk Capacity:

Memory Capacity:

Optional Equipment:

Chapter 1

Introduction

User's Info: There are more and more people spending large amounts of time in front of computer monitors now that scientists from many fields including anatomy, psychology, and occupational safety are involved in the study of ergonomically sound work environments.

A few tips to help you work effectively without a lot of physical discomfort:

- Purchase a chair with armrests and good back support. Don't slouch when sitting; keep your back straight.
- Try to place the LCD panel or external monitor so that there is little glare from the sun on the monitor.
- Walk around the room every hour.
- Every half hour look away from the computer screen for a few minutes.
- Place everything that you need to work within easy reach.

Welcome to the DeskNote Computer

Congratulations on your purchase of the DeskNote computer. Your DeskNote features the latest advances in portable computing technology. The DeskNote is designed for those who need the full power of a desktop PC with a modular design to provide maximum expandability without compromising portability.

The high-performance CPU and enhanced IDE hard drive provide you with extra processing power for handling complex graphics and running large programs.

The DeskNote features a factory fixed expansion module; a 5¼" CD-ROM or DVD-ROM drive.

To keep pace with the accelerated advances in technology, your DeskNote provides extensive upgrade options, an upgradeable hard disk drive and an upgradeable DIMM.

Unpacking the DeskNote Computer

The DeskNote comes securely packaged in a sturdy cardboard shipping carton. If anything is missing or damaged, please contact your DeskNote dealer immediately.

The shipping carton should contain the following items:

- The DeskNote computer
- An AC/DC adapter
- An AC power cord
- Phone cable
- The User's manual/Software Drivers CD title

Do not throw the packaging materials away. You may need them later if you have to ship the computer for repairs.

Accessories and Optional Devices

- TV-Out cable

-
- External battery (optional)

Getting to Know Your Computer

Opening the LCD Panel

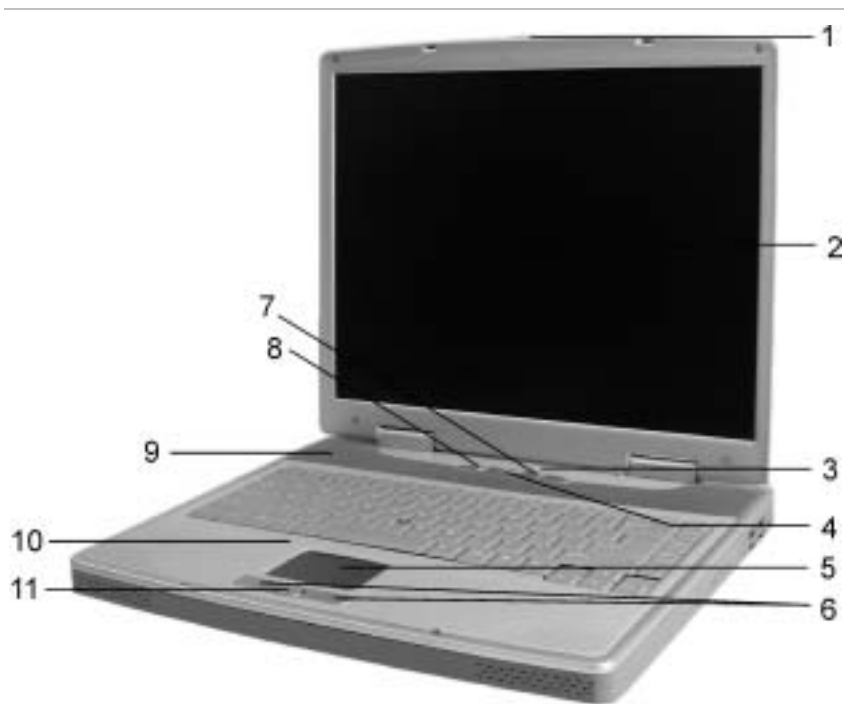
At the front of the DeskNote you will find a retaining latch on the display panel, which locks the display in closed position when the DeskNote is not in use.

1. Slide the display panel latch and then raise the LCD screen.
2. At any time you can tilt the display toward or away from you to a comfortable viewing position.

CAUTION: To avoid damage to the display panel:

1. Try not to slam the display upon closing it.
2. Try not to place any object on top when it is closed or open.
3. Be sure the system is turned off or in suspend mode before you close the display panel.

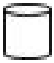



With the LCD screen open, you will see several features important for operating your DeskNote computer.



Each of these features is briefly described below.

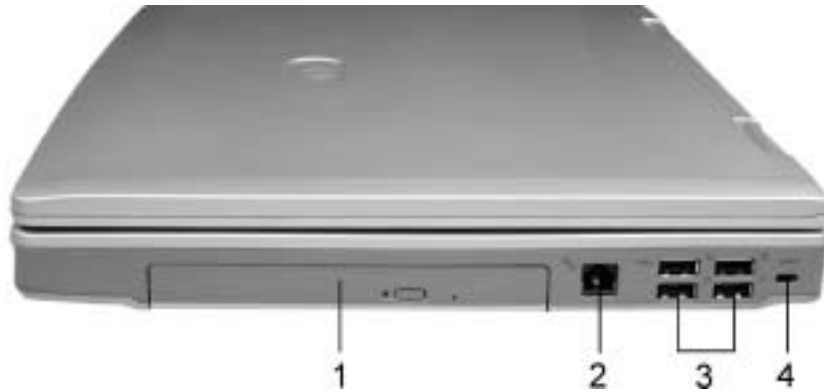
1. LCD Cover Release Latch - Allows you to open the display panel and reveal the LCD screen and the keyboard.
2. LCD Screen - Your DeskNote computer is equipped with a replaceable color Liquid Crystal Display (LCD) screen that supports up to 1024 x 768 LCD resolution.
3. System Status Indicator Panel - The system status indicator panel keeps you informed of the computer's operating status.



	HDD - Indicates that the computer is accessing the hard disk drive.
	NumLock - Indicates that the keyboard is in Num Lock mode.
	Caps Lock - Indicates when the keyboard is in Caps Lock mode. In this mode, the keyboard produces uppercase text when you press a key. When you press the Caps Lock key again, the indicator goes off and the keyboard produces lowercase text.
	Scroll Lock - Indicates when the keyboard is in Scroll Lock mode. Some applications will move information across the screen differently when Scroll Lock is on.

4. Power/Resume Button - Pressing this button for 1-2 seconds will turn on the system or pressing this button when the computer is in Suspend mode will resume normal operation. Pressing this button for 4-6 seconds will also turn off the system.
5. TouchPad - The TouchPad is hardware-compatible with the IBM PS/2 mouse and software-compatible with the Microsoft mouse.
6. TouchPad Buttons - The buttons below the TouchPad correspond to the left and right buttons on a standard mouse. The PS/2 compatible mouse will work with the DeskNote TouchPad simultaneously.
7. Internet Button - Press this button to launch Microsoft Internet Explorer or your default browser. If you are using Win98SE OS, it is necessary to install the hotkey driver to fully utilize this function key.
8. E-Mail Button - Use this key to open the Microsoft's Outlook Express to send/receive your mail. If you are using Win98SE OS, it is necessary to install the hotkey driver to fully utilize this function key.
9. Built-in Speaker - The internal speakers provide true stereo sound.
10. The Built-in Microphone - The built-in microphone is located to the left of the TouchPad.
11. Scroll Button - Use this button to scroll up and down the scrolling bar.

The Right Side

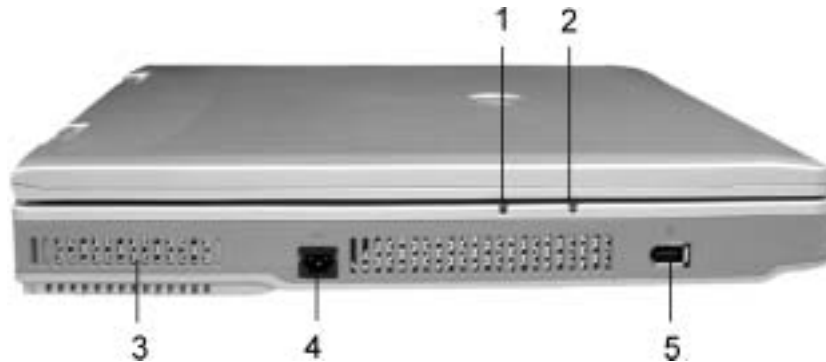


1. The CD-ROM/DVD-ROM Drive - Your DeskNote comes with a swappable 24X (or higher) 5.25" IDE CD-ROM or 8X DVD-ROM drive.
2. Modem Port - You will be able to connect your computer to your phone line through this port.

CAUTION: Always disconnect all telephone lines from the wall outlet before servicing or disassembling this equipment. To reduce the risk of fire use only No. 26 AWG or larger telecommunication line cord.

3. USB Ports - Your computer includes four Universal Serial Bus (USB) ports. USB is the latest development in Plug and Play technology. It will eventually replace the need for separate connectors for external keyboards, serial ports, and parallel (printer) port.
4. Kensington Lock - Your computer includes a keyhole to be used with a standard Kensington lock. You can connect the DeskNote lock to a large object with the Kensington lock to prevent theft of your DeskNote.

The Left Side



Power LED Indicators



These two LED indicators are separately programmed for the following functions: Suspend mode and Power On.

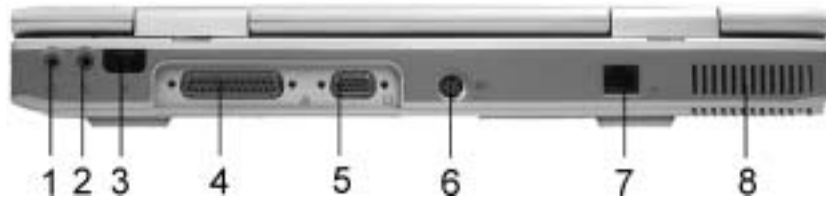


1. Suspend mode - This indicator will lit when the DeskNote is in suspend mode.
2. Power On - This indicator will lit when the DeskNote is powered on.
3. Cooling Fan Vent - This fan prevents the DeskNote CPU and other internal components from becoming overheated. Keep this fan unobstructed to allow proper ventilation to the DeskNote's internal components.
4. DC IN Connector - Plug the AC adapter into this connector. Refer to Chapter Two, *Connecting to a Power Source* for more information.
5. 1394 USB - A very fast external bus standard that supports data transfer rates of up to 400 Mbps (400 million bits per second).

Can be used to connect up 63 external devices, also supports isochronous

data -- delivering data at a guaranteed rate. This makes it ideal for devices that need to transfer high levels of data in real-time, such as video devices. Also supports both Plug-and-Play and hot plugging, and also provides power to peripheral devices.

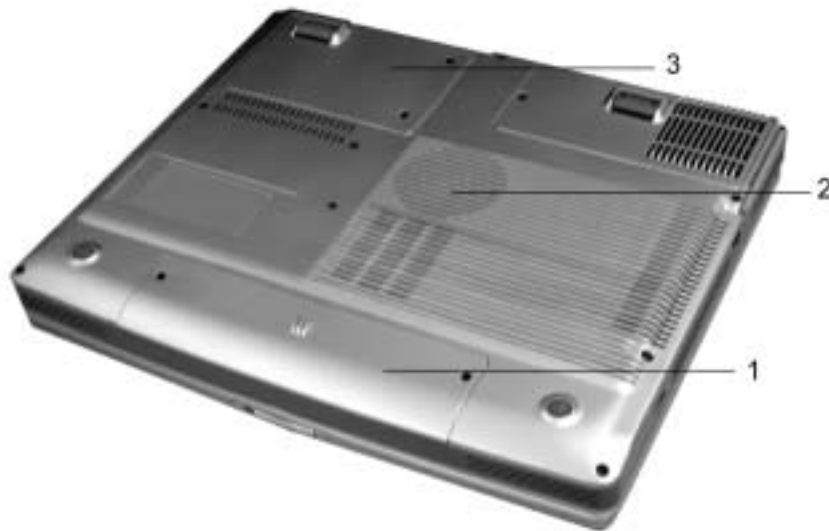
The Rear Side



1. Headphone Jack - This is for headphone output that supports SPDIF output 5.1 channel. You can plug an external headphone into your DeskNote or connect to SPDIF speaker to enjoy the DVD title.
2. External Microphone Jack - This mono microphone jack is used to connect an external microphone.
3. Infrared Data Port - The Infrared Data Port allows your DeskNote to become truly wireless. You can use this port to transfer large amounts of data very quickly to any other machine (DeskNote computers, printers, etc.), which is also equipped with an IrDA-compliant IR port. This allows you to print documents without any inconvenient cable hookups.
4. Parallel Port - This port allows you to easily connect a parallel printer or plotter using this 25-pin bi-directional female port.
5. External CRT Port - This port allows you to easily connect an external VGA/SVGA display monitor into your DeskNote using the 15-pin female connector.
6. TV Out Connector - You can connect an external television via the S-Video TV out connector.
7. LAN Port - This port provides a standard RJ-45 connection with an existing network via a network cable.

-
8. Cooling Fan Vent - This fan prevents the DeskNote CPU and other internal components from becoming overheated. Keep this fan unobstructed to allow proper ventilation to the DeskNote's internal components.

The Bottom



1. Expansion Compartment - This compartment will serve as an expansion to upgrade your DDR module.
2. Cooling Fan Vent - This fan prevents the DeskNote CPU and other internal components from becoming overheated. Keep this fan unobstructed to allow proper ventilation to the DeskNote's internal components.
3. Hard Disk Drive Compartment - Your computer includes a 2.5-inch IDE hard disk drive (9.5mm in height) with 10GB or more storage capability. The DeskNote BIOS automatically detects IDE drive types.

Preparing the DeskNote for Transport

To prepare the computer for transport, you should first disconnect all peripherals. Make sure the computer is turned off before you do this. After disconnecting all peripherals, close the rear port covers to protect the connectors. The DeskNote hard disk head is self-parking.

This means that the DeskNote can be directly turned off from the DOS prompt.

Chapter 2

Getting Started

Connecting the AC Adapter

A universal AC adapter or an optional UPS is provided to supply your computer with power. The adapter's AC input voltage can range anywhere from 100 to 240 volts, covering the standard voltages available in almost every country.

Using the AC adapter as your power source



1. Plug the AC adapter's connector into the connector on the rear side of the DeskNote.

-
2. Connect the power cord to the AC adapter and then to a wall outlet.
-
-

CAUTION: The best kind of AC power source to connect your DeskNote to an external battery. Lacking this, use a power strip with a built-in surge protector. Do not use inferior extension cords as this may result in damage to your DeskNote.
The DeskNote comes with its own AC adapter. Do not use a different adapter to power the computer and other electrical devices.

Whenever possible, keep the AC adapter plugged into the DeskNote.

CAUTION: Never turn off or reset your DeskNote while the hard disk is in use and the HDD status icon is lit; doing so can result in loss or destruction of your data. Always wait at least 5 seconds after turning off your DeskNote before turning it back on; turning the power on and off in rapid succession can damage the DeskNote's electrical circuitry.

Turning On Your DeskNote Computer

Turn on your DeskNote by pressing the power button. Hold the button down for a second or two and release. The Power-On Self Test (POST) runs automatically.

After the POST is completed, the computer reads the operating system from the hard disk drive into computer memory (this is commonly referred to as "booting" a computer). If your OS (Operating System such as Windows ME, Windows 2000.... etc) is installed, it should start automatically.

To turn the DeskNote off, save your work and close all open applications, click on Start, then Shut Down and select Shut down the computer and click "Yes" or press the power button for 4 seconds.

About the ROM BIOS

Your DeskNote computer is configured with a customized Basic Input/Output System (BIOS), which tests the computer and determines how the computer reacts to specific instructions that are part of programs.

About the Power-On Self Test

The Power-On Self Test (POST) runs every time you turn on the computer. The POST checks memory, the main system board, the display, the keyboard, the disk drives, and other installed options.

Two kinds of malfunctions can be detected during the POST:

- Error messages that indicate a failure with the hardware, the software, or the BIOS. These critical malfunctions prevent the computer from operating at all or could cause incorrect results. An example of a critical error is a microprocessor malfunction.
- Messages that furnish important information (such as memory status) on power-on and boot processes. These *non-critical malfunctions* are those that cause incorrect results that may not be readily apparent. An example of a non-critical error would be a memory chip failure.

In general, if the POST detects a system board failure (a critical error), the computer halts and generates a series of beeps.

If failure is detected in an area other than the system board (such as the display, keyboard, or an adapter card) an error message is displayed on the screen and testing is stopped.

The POST does not test all areas of the computer, but only those that allow it to be operational enough to run any diagnostic program. If your system does not successfully complete the POST, but displays a blank screen, emits a series of beeps, or displays an error code, consult your dealer.

Resetting the System

After installing a software application package, you may be prompted to reset the system to load the changed operating environment. To reset the system, or “reboot,” press the [Ctrl] + [Alt] + [Delete] keys simultaneously. This is known as “warm boot.” This key combination acts as a “software” reset switch when you encounter hardware or software problems, which lock up the DeskNote.

If this key combination does not reset the DeskNote, you can shut down the DeskNote by using the computer's power button. Should the computer lock up for some reason, pressing this button powers the computer off.

Adjusting the Brightness

To adjust the brightness on the LCD screen, press and hold down the [Fn] key in the lower left hand corner of the keyboard and press the [F7] key to reduce the brightness or [F8] to increase the brightness.

Chapter 3

Using the DeskNote Computer

The LCD Display

The DeskNote computer comes with a Color LCD display panel that supports the following display options:

Display	Resolution	Color Depth
15.0" SXGA TFT	1280 x 1024	32 bit
15.0" XGA TFT	1024 x 768	32 bit
14.1" XGA TFT	1024 x 768	32 bit

All displays support up to 1024 x 768 x 64K color mode on an external CRT. The LCD screen display results can be adjusted by changing the LCD panel angle, and the display brightness.

Adjusting the LCD Screen Display

The following key combinations can adjust the LCD screen display.

Key Combinations	Definitions
[Fn] + [F7]	Decreases the brightness level.
[Fn] + [F8]	Increases the brightness level.
[Fn] + [F10]	Use this key combination to expand your video screen

	or reset to its original size.
[Fn] + [F12]	This key combination toggles the display between the LCD display and an external CRT or TV simultaneously.

LCD Care

LCD screens are delicate devices that need careful handling. Please pay attention to the following precautions:

- When you are not using the computer, keep the LCD screen closed to protect it from dust.
- If you need to clean your LCD screen, use a soft tissue to gently wipe the LCD surface.
- Do not put your fingers or sharp objects directly on the surface and never spray cleaner directly onto the display.
- Do not press on, or store any objects on the cover when it is closed. Doing so may cause the LCD to break.

External CRT Display

You can hook up an external monitor through the 15-pin CRT connector. Four configurations are available:

- LCD only
- Simultaneous display of the LCD screen and CRT monitor
- CRT only
- TV out

You can switch between these display configurations by pressing the key combination [Fn] + [F12].

A Tour of the DeskNote's Keyboard

The DeskNote's keyboard uses a standard QWERTY layout with the addition of special function keys and an embedded numeric keypad for number intensive data entry. Your keyboard supports Windows 98 by incorporating the two Windows specific keys. With the two Windows 98 keys you will be able to access and take advantage of many of the time-saving features of Windows 98

software.

The QWERTY layout means the alphanumeric keys located on the keyboard are in the same position as those found on a standard typewriter.

The function keys (F1-F12) on the top row of the keyboard serve different purposes and carry out different tasks depending on the application you are running.

The cursor (arrow) keys (which are all located in the lower right corner of your keyboard) and the [PgUp], [PgDn], [Home] and [End] keys (which are located along the right edge of the keyboard) allow you to move the active cursor of the computer to various locations on the screen or within the document.

The embedded numeric keypad consists of 15 keys that make number intensive input more convenient. Like the [Num Lock] key, these keys are labeled in blue on the keycaps. Numeric assignments are located at the upper right of each key.



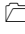
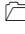
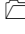
When the numeric keypad is engaged, the NumLock icon will appear in the System Window. The keypad is activated by pressing the [Fn] + [NumLk] key. If an external keyboard is connected, pressing the NumLock key on either the DeskNote or external keyboard will enable/disable NumLock of both keyboards in unison.

To disable the DeskNote numeric keypad while keeping the keypad on an external keyboard activated, use the [Fn] + [NumLk] hot key on the DeskNote keyboard.



The DeskNote's Hot Key Controls

Your DeskNote also contains controls, which are feature in blue color on the keys activated by pressing the [Fn] key (the key in the lower left corner of the keyboard beside the [Ctrl] key) in conjunction with the key for specific control function. To activate these keys, hold the [Fn] key and press the specific control function.

Key Combinations	Definitions
Power button	Press this button once to turn On your notebook. Press this button for over 4 seconds to turn Off your notebook. Press the button once to enter the suspend/resume mode under normal operating condition.
 Internet button	Press this button to open the Internet WWW Home short-cut key. Install the Hotkey driver.
 Email button	Press this button to open the Email reader short-cut key. Install the Hotkey driver.
 [Fn] + [F2]	Press this function to mute and unmute the system audio function. Install the Hotkey driver.
 [Fn] + [F3]	Press this function to decrease the volume. Install the Hotkey driver.
 [Fn] + [F4]	Press this function to increase the volume. Install the Hotkey driver.
[Fn] + [F7]	Decreases the brightness level.
[Fn] + [F8]	Increases the brightness level.
[Fn] + [F10]	Use this key combination to expand your video screen or reset to its original size.
[Fn] + [F12]	This key combination toggles the display between the LCD display and an external CRT or simultaneous.

User's Info: To fully utilize the hotkey function of Internet, Email, Fn+F2, Fn+F3, Fn+F4, the "Hotkey Driver" must be installed into your system. Please refer to Chapter 5 on "Installation of Hotkey Driver".

The TouchPad

Using the TouchPad

The TouchPad is a pressure sensitive pointing device that provides all the features of a two-button mouse.

1. The TouchPad is easily accessible by moving either your left or right thumb off the space bar and on to the TouchPad.
2. Gently move your thumb across the pressure-sensitive TouchPad in the direction you want the cursor to move.
3. The TouchPad offers a method of making selections called *double-tapping* and this corresponds to double-clicking with a mouse.



4. Clicking the buttons below the TouchPad makes selections, drags

objects, or performs a variety of other functions depending on the software.

TouchPad Precautions

The TouchPad is a pressure sensitive device. Please take note of the following precautions.

- Make sure the TouchPad does not come into contact with dirt, liquids or grease.
- Do not touch the TouchPad if your fingers are dirty.
- Do not rest heavy objects on the TouchPad or the TouchPad buttons.

You can use the TouchPad with Microsoft Windows as well as non-Windows applications.

Data Storage and Retrieval

Data storage and retrieval are two of the most fundamental tasks you will perform when working with your computer. The DeskNote is equipped with hard disk drive (HDD). The HDD is removable allowing for easy upgrades.

The Upgradeable HDD Module

Your computer's hard disk drive is an integrated electronic drive, commonly referred to as an IDE drive, with a form factor of 2.5 inches. The formatted capacity of the DeskNote's HDD is 10GB or above.

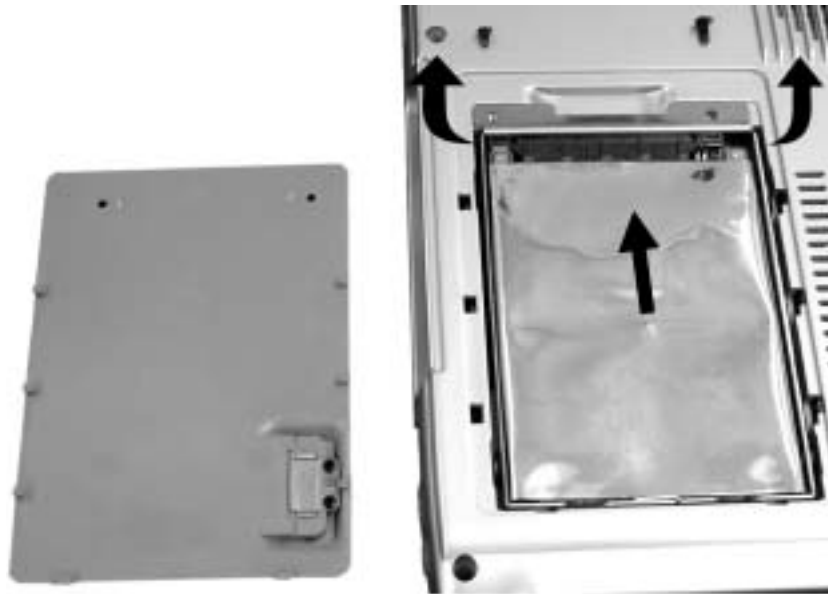
To Upgrade Your Hard Drive

Power down the system completely. Be sure to unplug the AC adapter before removing the drive. Disconnect any attached peripherals. Turn the system over. The front of the unit should be facing you. The hard disk drive (HDD) compartment is located toward the front of the unit.

-
1. Remove the two screws and set them in a safe place. Slide the grip into the direction away from you as shown in the illustration.
 2. Use a screwdriver to lift up the HDD cover from the compartment.



3. Remove the two screws attached to the HDD drive. Lift up the HDD from its compartment.



4. Remove the new hard drive from its anti-static bag. You can use the same anti-static bag to store your old hard drive.
5. To install the new hard drive, align the tabs on the drive bracket with the slots on the bay and press it gently ease the drive into the bay. Slide the drive until it engages with the system.
6. Slide the compartment cover into place. Be sure that the screw holes on the cover align completely with the screw holes in the case and secure the cover with the two screws.

The CD-ROM

Features of the CD-ROM Module

The features of the CD-ROM drive are listed below.

- The Audio Play feature allows you to play music CDs
- Front panel load/unload button

-
- Supports CD-DA, CD-ROM mode 1 and mode 2, Multi-Session Photo CD™, CD-I/Video CD (pcs.)
 - Low power consumption
 - 12.7mm height

Precautions for Handling CD-ROM Discs

- Always hold the disc by the edges, avoid touching the surface.
- Use a clean, dry, cloth to remove dust, smudges, or fingerprints. Wipe from the center outward.
- Do not write or place objects on the surface of the disc.
- Store discs in a cool dry place not to damage the disc.
- Do not use benzene, thinners, or cleaners with detergent. Only use CD-ROM cleaning kits.
- Do not bend or drop the discs.

Loading a Disc

To play a CD disk, follow the instructions listed below.

1. Push the CD-ROM eject button on the CD drive door. Gently pull the tray all the way out.
2. Carefully lift the CD disk by the edges and make sure the shiny surface is face down (the side with no writing on it). Carefully insert the CD disk onto the tray. Push the CD disk down gently so that it snaps onto the center ring.
3. Push the tray back into the drive.

To remove a CD disk, do the following:

1. Check the LED display and make sure that the computer is not accessing the CD-ROM drive.
2. Push the eject button and pull the tray all the way out.
3. Carefully pick up the CD by the edges and – while pressing down on the center ring – remove the CD disk from the tray.

NOTE: Do not insert any foreign objects into the disc tray. If you experience difficulty when ejecting the CD disk tray, stretch a paper clip (or use a pin or a thin metal rod) and insert it into the emergency eject hole located on the right side of the front panel. The CD disk tray should eject immediately. This procedure can also be used to remove a CD from the drive when the DeskNote is powered off.

The Multimedia Sound System

The DeskNote's built-in audio capabilities allow you to take advantage of a wide range of education and entertainment multimedia software. The DeskNote is equipped with two internal stereo speakers, a microphone, and input audio ports for external audio units.

An external microphone can be connected to the microphone jack. External speakers or headphones can be connected to the DeskNote's audio-out jack.

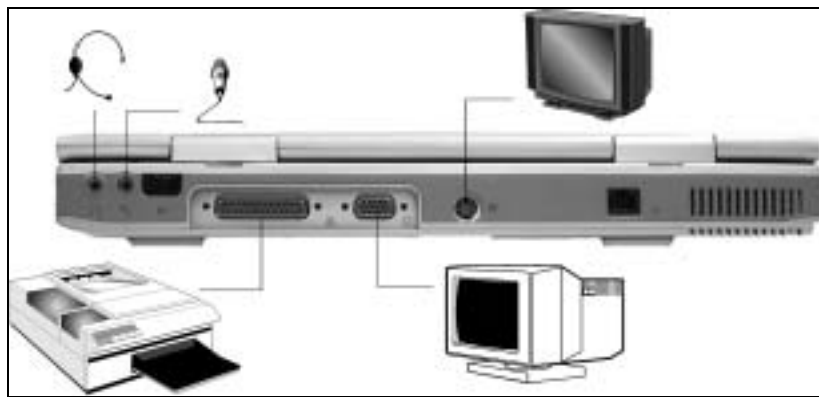
External audio devices can be connected to the Line in jack. All audio features are software controlled. The DeskNote's multimedia sound system includes the following features:

- Supports Windows Sound System compatibility
- Full Duplex operation
- Dynamic filtering reduces noise and distortion rate
- 16-bit digitized audio playback
- A built-in microphone for convenient recording
- Two built-in stereo speakers with chambers
- Digitized audio recording through the DeskNote's built-in microphone or any external source

Connecting Peripheral Devices

To expand your computing capabilities, you can add a variety of external devices to your computer. You may, for example, want to add a mouse, modem, or a printer.

The computer is equipped with several interface ports, including an enhanced parallel (printer) port, a serial port, and 4 USB ports. These are provided as a means of connecting peripheral devices to the computer. Connect peripheral devices to the computer's interface ports as shown below:



Power Saving Modes

This section contains information on the DeskNote's power system, including the AC Adapter, the UPS system, recharging the UPS, and tips for conserving UPS power. The power system is comprised of two parts, the AC Adapter and the UPS system. The AC Adapter converts AC power from a wall outlet to the DC power required by the computer.

The AC Adapter

The AC Adapter's primary function is to provide power to the DeskNote. If the AC Adapter is not functioning properly, please consult your dealer immediately for support.

Small Battery for the Real Time Clock

There is a small built-in battery that supplies power to the system in order to maintain certain system information while the power is off.

WARNING: Danger of explosion if the battery is incorrectly replaced. Replace only with the same or equivalent type recommended by the manufacturer. Dispose of used batteries according to the manufacturer's instructions. Never remove the battery pack while the power is on as this may result in data loss when the system loses power.

Chapter 4

Running BIOS Setup

Introduction

The BIOS (Basic Input and Output System) Setup program is a menu driven utility that enables you to make changes to the system configuration and tailor your system to reflect installed hardware or alter system performance. When the DeskNote is turned back on, the system is configured with the values stored in CMOS.

Navigating through BIOS Setup

The Setup program has been designed to make it as easy to use as possible. If you accidentally make a setting and don't know which one to switch back to, the Setup program has a hot key that allows you to return to the previous value.

Accessing the BIOS Setup Program

To access the BIOS Setup program, press the Del key after the DeskNote has run through its POST.

Item Specific Help

On the right side of the Setup screen is an area labeled Item Specific Help. This area will list navigation key shortcuts and information that is specific for the item that you are currently editing.

The Menu Bar

The top of the screen has a menu bar with the following selections:

Standard CMOS Setup

Set the time and date. Configure disk drives.

Advanced CMOS Setup

Configure basic system performance parameters.

Peripheral Setup

Configure I/O support for the DeskNote.

To access the menu bar items, press the **↑** up or **↓** down arrow key on the keyboard until the desired item is highlighted.

The Legend Bar

At the bottom of the Setup screen you will notice a legend bar. The keys in the legend bar allow you to navigate through the various setup menus.

The following table lists the keys found in the legend bar with their corresponding alternates and functions.

Legend Key	Function
Esc	Jumps to the Exit menu or returns to the Main menu from a submenu.
↑ or ↓	Moves the cursor up and down between fields.
PgUp/PgDn	Set to modify the field selected.
F2/F3	Set the color (8 colors) of the BIOS Setup screen.

F10	Save and Exit.
Enter	Will select a sub menu or show a range of options for a field.

Launching Submenus

Note that a right pointer symbol ⏏ appears to the left of certain fields. This pointer indicates that a submenu can be launched from this field. A submenu contains additional options for a field parameter. To call up a submenu, simply move the cursor to highlight the field and press the **[Enter]** key. Use the **[Esc]** key to return to the Main menu.

General Help

In addition to the Item Specific Help window, the BIOS Setup program also provides a General Help screen can be called up from any menu by simply pressing **[F1]** or the **[Alt] + [H]** combination.

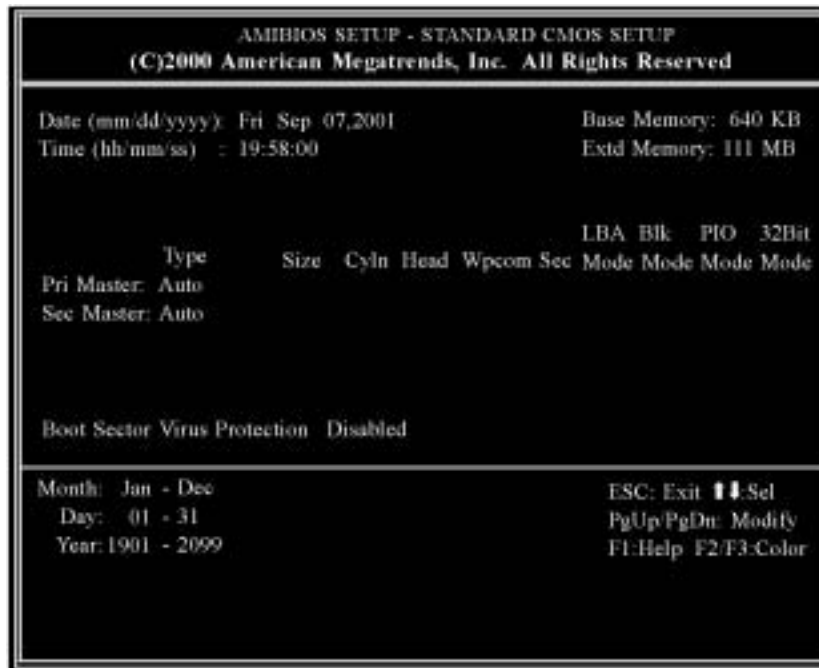
Use the up and down arrow keys (\updownarrow) to scroll through the entire help document. Press the Home key to display the first page, press End to go to the last page. To exit the help window, press the **[Enter]** or **[Esc]** key.

Save Changes and Exit the Setup Program

Refer to the Exit menu section of this chapter for detailed information on saving changes and exiting the setup program.

The Standard CMOS Setup

When the Setup program is accessed, the following screen appears:



Date/Time

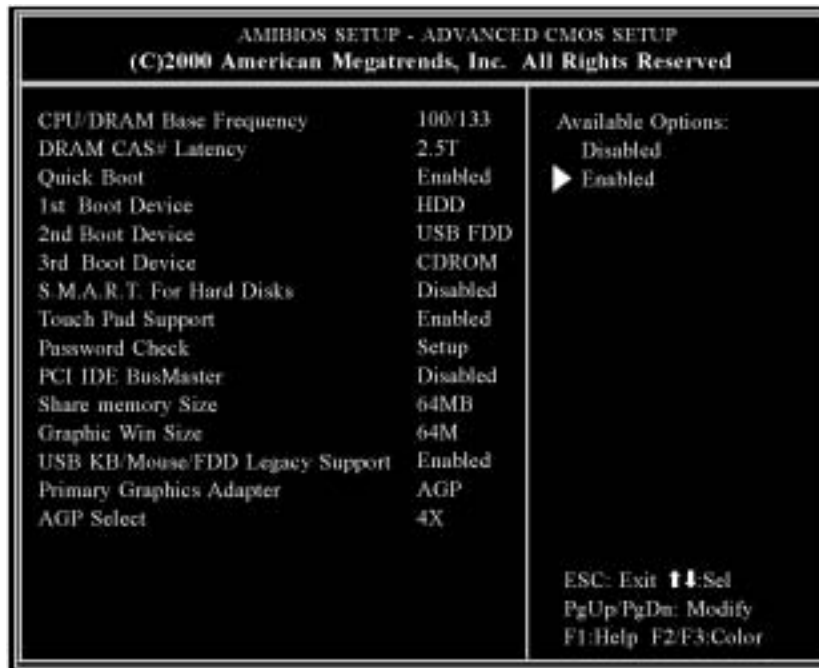
The current values for each category are displayed. Enter new values through the keyboard.

Pri Master, Sec Master

Select one of these hard disk drive icons to configure the hard disk drive named in the option.

The Advanced CMOS Setup

When the Setup program is accessed, the following screen appears:



CPU/DRAM Base Frequency

Set this option to select the CPU/DRAM base frequency for your system.

- The settings are 100/100MHz or 100/133 MHz

DRAM CAS# Latency

Set the amount of time to access the memory.

- The settings are 2.5T or 3T

Quick Boot

Set this option to Enabled to instruct AMIBIOS to boot quickly when the computer is powered on.

- The settings are Disabled or Enabled (default value).

1st Boot Device

This option sets the type of device for the first boot drives that the AMIBIOS attempts to boot from after AMIBIOS POST completes.

- The settings are Disabled, HDD (default value), CD-ROM and USB FDD.

2nd Boot Device

This option sets the type of device for the second boot drives that AMIBIOS attempts to boot from after AMIBIOS POST completes.

- The settings are Disabled, HDD, CD-ROM and USB FDD (default value).

3rd Boot Device

This option sets the type of device for the third boot drives that the AMIBIOS attempts to boot from after AMIBIOS POST completes.

- The settings are Disabled, HDD, CD-ROM (default value) and USB FDD.

S.M.A.R.T. for Hard Disks

Set this option to Enabled to permit AMIBIOS to use the SMART (System Management System and Reporting Technologies) protocol for reporting server system information over a network.

- The settings are Enabled or Disabled (default value).

TouchPad Support

Set this option to enabled or disabled the touchpad. The default setting is Enabled.

Password Check

This option enables password checking every time the system boots or when you run AMIBIOS Setup. If Always is chosen, a user password prompt appears every time the computer is turned on. If Setup is chosen, the password prompt appears if AMIBIOS is executed.

PCI IDE BusMaster

Set this option to Enabled to specify that the IDE controller on the PCI bus has bus mastering capability.

- The settings are Disabled (default value) or Enabled.

Share Memory Size

This field shows the share memory size available.

Graphic Win Size

This field shows the graphic win size available.

- The settings are 4M/8M/16M/32M/64M (default value)/128M/256M

USB Keyboard/Mouse/FDD Legacy Support

Set this option to Enabled to enable support for older keyboards and mouse devices if the USB Function option is set to Enabled.

- The settings are Enabled (default value) or Disabled.

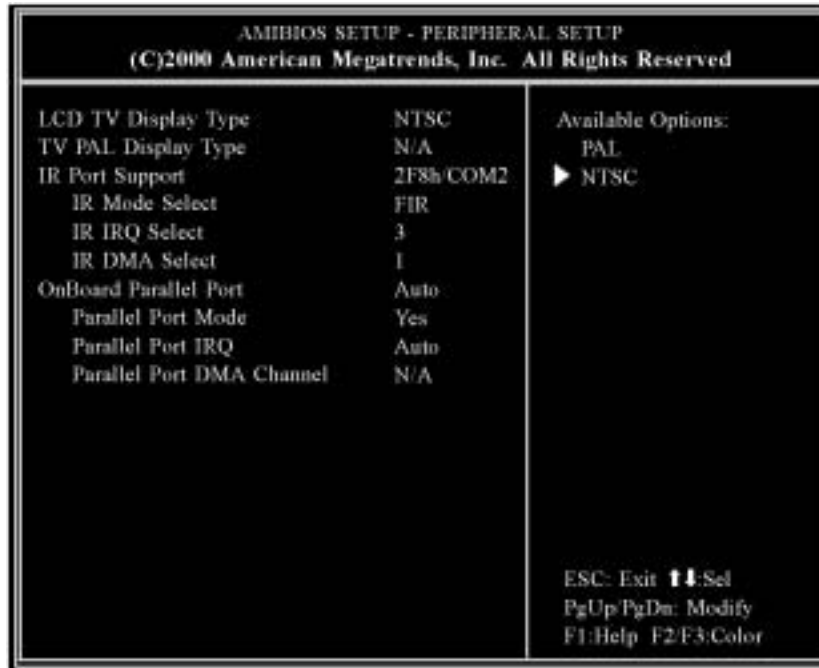
Primary Graphics Adapter

This is only a display-only item and cannot be altered.

AGP Select

This is only a display-only item and cannot be altered.

The Peripheral Setup



LCD TV Display Type

This field allows you to choose the television display option when using the TV out port.

- The settings are PAL, NTSC (default value).

TV PAL Display Type

This field allows you to choose the television PAL system type.

- The settings are PAL (default value), PAL-M, PAL-N.

IR Port Support

This option specifies the IR port address for the IR Port.

-
- The settings are Disabled, 6F8h (default value), 7F8h, 7E8h or 6E8h.

IR Mode Select

This option specifies the infrared transmission method.

- The settings are SIR (default value) or FIR.

IR IRQ Select

This option specifies the IR IRQ select for the IR port.

- The settings are 3 (default value), 4, 5, 9, 10, 11 and 12.

IR DMA Select

This option specifies the IR DMA select for the IR port.

- The settings are Disabled, 0, 1 (default value) and 3.

OnBoard Parallel Port

This option specifies the base I/O port address of the parallel port on the motherboard.

- The settings are Auto, Disabled, 378h, 278h, or 3BCh.

Parallel Port Mode

This option specifies the parallel port mode.

- The settings are Normal, Bi-dir (default value), EPP or ECP.

Parallel Port IRQ

This option specifies the IRQ used by the parallel port. This is only a display-only item and cannot be altered.

- The settings are 5 or 7 (default value).

Parallel Port DMA Channel

This is only a display-only item and cannot be altered.

Change Supervisor Password

This field allows you to set the Supervisor password. To set the Supervisor password, highlight this field and press the [Enter] key. The following dialog box appears:

Enter new supervisor password:

Auto Configuration with Optimal Settings

The optimal default settings are best-case values that should optimize system performance. To set the configuration, highlight this field and press the [Enter] key. The following dialog box appears:

Load high performance settings [Y/N] ?

Save Settings and Exit

This option saves your selections and exit the Setup program.

Save current settings and exit [Y/N] ?

Exit Without Saving

This option should only be used if you do not want to save the changes you have made to the Setup program.

Quit without saving [Y/N] ?

Chapter 5

The Software Utilities Disks

There are two separate procedures on how to install the driver: AutoRun installation and Manual installation.

AutoRun Installation

- Follow the step-by-step procedures on the CD-ROM to execute the “AutoRun” application by selecting the topic of “Driver Installation”.
- To re-run the “AutoRun” installation, please refer to the procedures on the “Manual Installation” for a more detailed explanation.

Installing VGA Display Drivers for Win98SE/2K/ME/XP

1. Insert the CD-ROM Driver into your CD-ROM drive. Click “Start” and Select “Run”.
2. Type the following: D:\Driver\VGA\Setup.exe (If D is not your CD-ROM drive, substitute D with the correct drive letter).
3. Click on “Setup” to begin the Installation Wizard.
4. Follow the Wizard’s on-screen instructions to complete the installation. Restart the system.

Installing Hotkey Drivers for Win98SE

NOTE: This driver must be installed into your system to fully utilize the hotkey function of Internet, Email, Mute/Unmute, Volume.

1. Insert the CD-ROM Driver into your CD-ROM drive. Click “Start” and Select “Run”.
2. Type the following: D:\Driver\Hotkey Driver\Win98SE\Setup.exe (If D is not your CD-ROM drive, substitute D with the correct drive letter).
3. Click on “Setup” to begin the Installation Wizard.
4. Follow the Wizard’s on-screen instructions to complete the installation. Restart the system.

Intalling the Audio Driver for Win98SE/2K/Me/XP

1. Insert the CD-ROM Driver into your CD-ROM drive. Click “Start” and Select “Run”.
2. Type the following: D:\Driver\Audio\Win9X\Setup.exe (for Win98SE/ME) or D:\Driver\Audio\Win2KXP\Setup.exe (for Win2K/XP) (If D is not your CD-ROM drive, substitute D with the correct drive letter).
3. Click on “Setup” to begin the Installation Wizard.
4. Follow the Wizard’s on-screen instructions to complete the installation. Restart the system.

Installing the TouchPad Driver for Win98SE/2K/Me/XP

1. Insert the CD-ROM Driver into your CD-ROM drive. Click “Start” and Select “Run”.
2. Type the following: D:\Driver\Touchpad\Setup.exe (If D is not your CD-ROM drive, substitute D with the correct drive letter).
3. Click on “Setup” to begin the Installation Wizard.

-
4. Follow the Wizard's on-screen instructions to complete the installation. Restart the system.

Installing the IR Driver for Win2K/XP/ME

1. Insert the CD-ROM Driver into your CD-ROM drive. Click "Start" and Select "Run".
2. Type the following: D:\Driver\IR Driver\SETUP.exe (If D is not your CD-ROM drive, substitute D with the correct drive letter).
3. Click on "Setup" to begin the Installation Wizard.
4. Follow the Wizard's on-screen instructions to complete the installation. Restart the system.

Manual Installation

To install the driver manually, follow the step-by-step procedures described on each individual section for a more clear installation.

Installing the IR Driver for Win98SE

Please follow these instructions to install the FIR driver:

1. From your screen, click on the "My Computer" icon and use your mouse or touchpad right button to select the "Properties" item.
2. Select the "Device Manager" and click on the "Winbond Infrared Controller" (denoted by a yellow mark symbol).
3. Click the "Update Driver" tab and select the "Search for a better driver than the one your device is using now(Recommended)" item and specify a location.
4. Select the "Browse" button from the "Include this location in the search" and specify for the designate location of your CD driver.

For Win2K/XP

After the installation of the IR is completed, the device name found on your system is "Winbond Fast Infrared Controller (DMA)".

Double click on the item and select the "Advanced" tab. From the "Value" box, select the "TEMIC" item and click on the "Apply" button.

For Win98SE/ME

Select the "My Network Places" icon and click your mouse right button to select the "Properties" item. Select the "Winbond Infrared Controller (DMA)".

Double click on the item and select the "Advanced" tab. From the "Value" box, select the "TEMIC" item and click on the "Apply" button.

The installation will create a certain icon for the IR to operate for wireless link between two DeskNote computers.

For WinXP

- Double click on the "Wireless Link" icon from the "Control Panel" window.
- Click on the "Image Transfer" tab and select the "Use wireless link to transfer images from a digital camera to your computer" item
- Click on the "Apply" tab to proceed with the installation and make the application running.

For Win98SE/ME

- From your window display, select on the "My Network Places" icon and use your mouse/touchpad right button to click the "Properties" item
- Select the "File & Print Sharing" tab from the "Network" window.
- Select put a check mark (✓) on the two items shown in the window and click the OK button to execute the program.
- Restart the system.

Installing the USB 2.0 Driver for Win2K

Please follow these instructions to install the USB 2.0 driver.

1. From your screen, click on the "My Computer" icon and use your mouse or touchpad right button to select the "Properties" item.
2. Click on the "Hardware" tab from the "System Properties" window.
3. Click on the "Device Manager" and double click the "Universal Serial Bus (USB) Controller" (denoted by a yellow mark symbol).
4. Click the "Update Driver" tab on the "Driver" item and select the "Next".
5. Select the "Search for a suitable driver for my device (recommended)" and click on the "Next" item.
6. Select the "Specify a location", click on the "Next" item.
7. Select the "Browse" button and specify for the designate location of your CD driver.

NOTE: The procedures mentioned above described if you are installing the driver automatically to search for a suitable driver. Another is option if you are installing the driver manually where you select from a list of known drivers for your system.

1. Repeat steps 1-4 and select the "Display a list of the know drivers for this device so that I can choose a specific driver" and click on the "Next" item.
2. Select "Other Devices" and click on the "Have Disk" tab.
3. From the "Upgrade Device Driver Wizard" window, select "VIA" and "VIA PCI to USB Enhanced Host Controller" models.
4. Click on the "Next" item to complete the installation.

Installing the USB 2.0 Driver for WinXP

Please follow these instructions to install the USB driver.

1. From your system, click on "Start" and click the "My Computer" icon.

Select the "View System Information".

2. Click on the "Hardware" tab from the "System Properties" window.
3. Click on the "Device Manager" and double click the "Universal Serial Bus (USB) Controller" (denoted by a yellow mark symbol).
4. Click the "Update Driver" tab on the "Driver" item.
5. Select the "Install from a list or specific location (Advanced)" and click on the "Next" item.
6. Select the "Search for the best driver in these location" and select the "Include this location in the search".
7. Select the "Browse" button and specify for the designate location of your CD driver.

Installing the LAN Driver for Win2K

Please follow these instructions to install the LAN driver:

1. From your screen, click on the "My Computer" icon and use your mouse or touchpad right button to select the "Properties" item.
2. Click on the "Hardware" tab from the "System Properties" window.
3. Click on the "Device Manager" and select the "Ethernet Controller" (denoted by a yellow mark symbol).
4. Click the "Update Driver" tab on the "Driver" item and select the "Next".
5. Select the "Search for a suitable driver for my device (recommended)" and click on the "Next" item.
6. Select the "Specify a location", click on the "Next" item.
7. Select the "Browse" button and specify for the designate location of your CD driver.

Installing the LAN Driver for Win98SE/ME

Please follow these instructions to install the LAN driver:

1. From your screen, click on the "My Computer" icon and use your mouse or touchpad right button to select the "Properties" item.

-
2. Click on the "Device Manager" tab from the "System Properties" window.
 3. Double click on the "PCI Ethernet Controller (for Win98SE) or "Network Adapter" (for WinME) (denoted by a yellow mark symbol).
 4. Click the "Update Driver" tab on the "Driver" item and select the "Next".
 5. Select the "Specify the location of the driver (Advanced)" item. Select the "Specify a location".
 6. Select the "Browse" button and specify for the designate location of your CD driver.

Installing the LAN Driver for WinXP

Please follow these instructions to install the LAN driver:

1. Click on the "Start" icon and select the "Control Panel" item
2. Click on the "Hardware" tab from the "System Properties" window.
3. Click on the "Device Manager" tab from the "Hardware" window.
4. Click on the "Network Adapter" (denoted by a yellow mark symbol), select the "SiS 900 PCI Fast Ethernet Adapter" and double click to enter the window.
5. Double click the "Update Driver" tab and select the "Install from a list or specific location (Advanced)" item.
6. Select the "Include this location in the search" item.
7. Select the "Browse" button from the "Include this location in the search" and specify for the designate location of your CD driver.

Installing the Modem Driver for Win2K/XP

Please follow these instructions to install the Modem driver:

1. From your screen, click on the "My Computer" icon and use your mouse or touchpad right button to select the "Properties" item.
2. Click on the "Hardware" tab from the "System Properties" dialog window.

-
3. Click on the "Other Device" (denoted by a yellow mark symbol), select the "PCI Device" (for Win2K) or "PCI Modem" (for WinXP).
 4. Click the "Update Driver" tab and select the "Install from a list or specific location (Advanced)" item.
 5. Select the "Include this location in the search" item.
 6. Select the "Browse" button from the "Include this location in the search" and specify for the designate location of your CD driver.

Installing the Modem Driver for Win98SE/ME

Please follow these instructions to install the Modem driver:

1. From your screen, click on the "My Computer" icon and use your mouse or touchpad right button to select the "Properties" item.
2. Click on the "Device Manager" and select the "PCI Card" item. Use your mouse cursor to double click the "Reinstall Driver" item.
3. Select the "Specify the location of the driver (Advanced)" and click on the "Specify a location" item.
4. Select the "Browse" button from the "Include this location in the search" and specify for the designate location of your CD driver.

Windows 98SE/ME VGA Utilities

After you have restarted Windows, open the "Control Panel" and double click on the "Display" icon. From the "Display Properties" window, select the "Settings" tab and click on the "Advanced" tab to enter the "SiS 650/740 Properties" window.

You will notice three new entries have been made in the Display Properties window: Display Modes, Video Setting, and 3D Settings.

Display Modes

The SiS's driver allows three simultaneous outputs to LCD, LCD/CRT and CRT. Before proceeding, be sure the monitor is connected to the DeskNote computer.



Driver Mode

This defines the two status of Single, Mirror and Multi Monitor (when an external monitor is connected to your DeskNote computer).

- When the "Single" is selected, the display can only be seen on the DeskNote LCD panel or external monitor.
- When the "Mirror" is selected, you can toggle between the LCD and CRT display. Both the LCD and CRT screen display the same image.

Display Combination

This applies to the display that you prefer to use. The options are VGA1 and LCD2.

REMINDER: The "Auto" tab will serve as an additional function of the "Mirror" and "VGA1" respectively by removing the ✓ check mark under the "Display Combination" selection field.

-
- Select the "VGA1" if you want the picture to only display on the monitor screen.
 - Select "LCD2" if you want the picture to only display on the DeskNote screen.
-

NOTE: Use the [Fn] + [F12] hot keys to toggle between the LCD and external monitor display.

If you prefer to use only one display in operating your system, press the [Fn] + [F12] hot keys will shut down the LCD display, external monitor display or both at this random order.

Option 1: Single

This function will only show one single display whether it be on your Desknote or external monitor.

Option 2: Mirror (Simultaneous Display)

This function supports two asynchronous simultaneous display paths with the features of LCD, LCD/CRT or CRT).

1. Click on the "Control Panel" and double click on the "Display" icon. Click on the "Settings" tab to enter the "Display Properties" window. Click on the "Advanced" button.
2. From the "SiS 650/740 Properties" window, click on the "Display Modes" tab
3. Select the "VGA1" or "LCD2" tab by clicking on the button to enable and connect the video display to the external CRT screen.
4. Click on the "Apply" tab and you will be ask to keep the new setting. The DeskNote and external monitor/TV screen will now simultaneously display the same image.


Option 3: Multi-Monitor

"Multi-Monitor" is only applicable when the function of "Dual View" is being access. This function will only be available if an external monitor is connected to your DeskNote computer.

Use this to achieve a large desktop display on a small size screen. To do this:

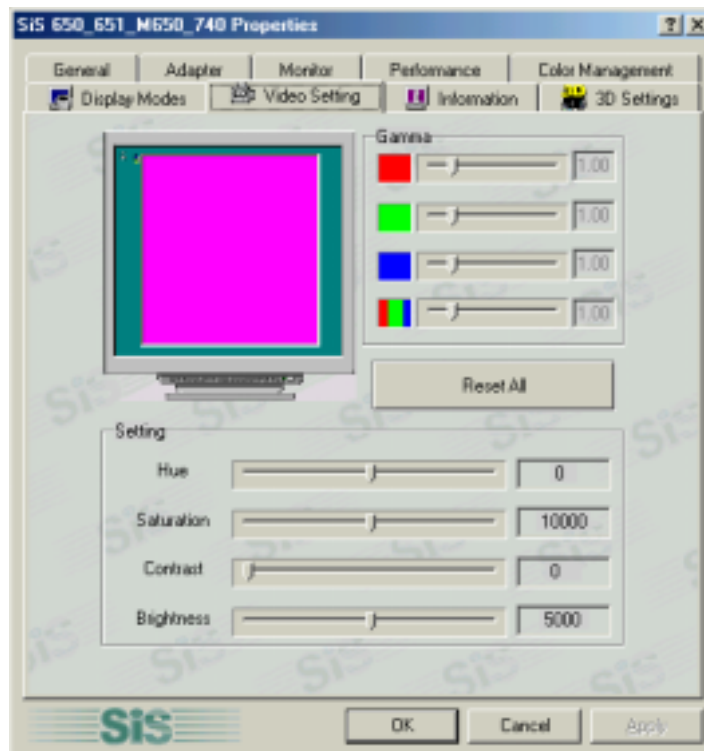
- Adjust the screen resolution by increasing the desktop area in the “Display Area”.
- Use your touch pad or mouse cursor to point at any area of the screen to move the window screen to a larger view.

To achieve the “Dual View” function, follow the procedures below:

1. Click on the “Control Panel” and double click on the “Display” icon. Click on the “Settings” tab to enter the “Display Properties” window.
 2. Use the cursor to click on the Monitor “2” screen on the sub-screen of the “Display Properties” window.
- 
3. A message is shown on your screen to ask you whether to enable the monitor that you have chosen. Click “Yes” to accept the change.
 4. Click the “Apply” tab to run the function and restart the computer.
 5. After the system has restarted, your DeskNote LCD screen and the external monitor screen are connected with each other.
 6. From the LCD display, open the “Display Properties” and use the cursor to drag it to the right thus moving the image to the external monitor screen.

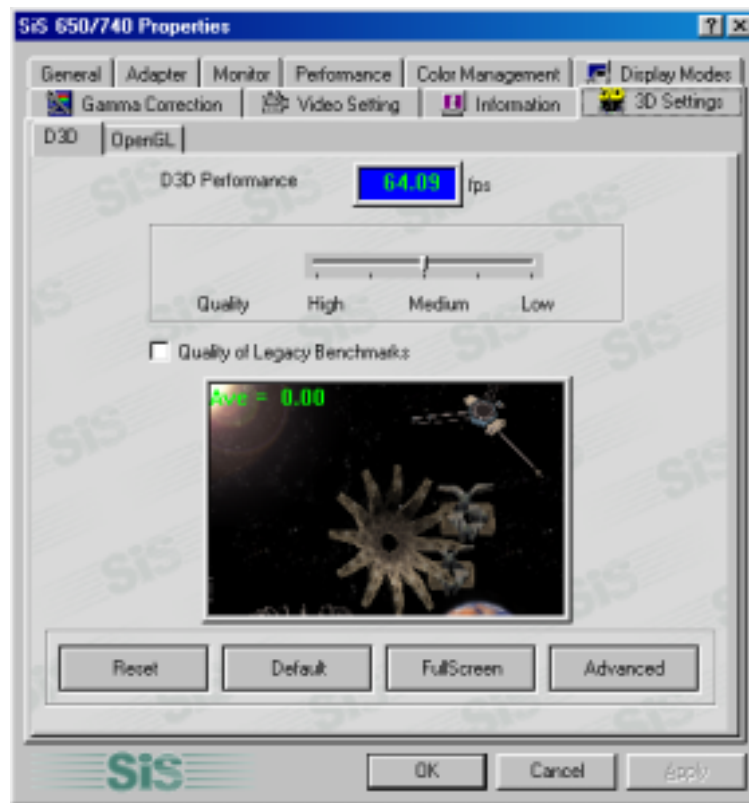
Video Setting

From the "Setting", you can also adjust the video of your display to overlay, contrast or brightness.



3D Settings

This setting lets you modify the 3D display performance.

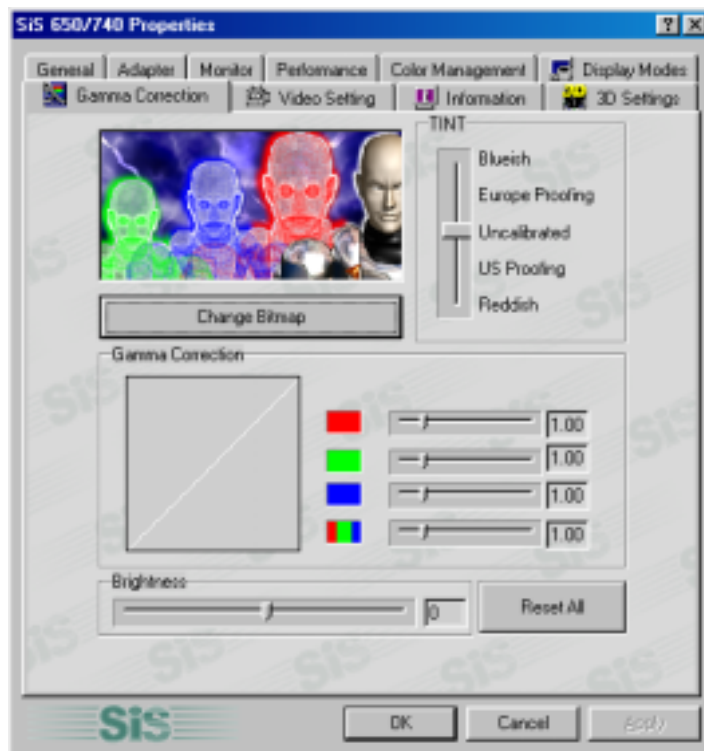


D3D

Modify the speed and quality of your 3D display.

Gamma Correction

You can adjust the right color for your window screen by moving the "Brightness" adjustment window to increase or decrease the right resolution for your screen display.



Windows 2000/XP VGA Utilities

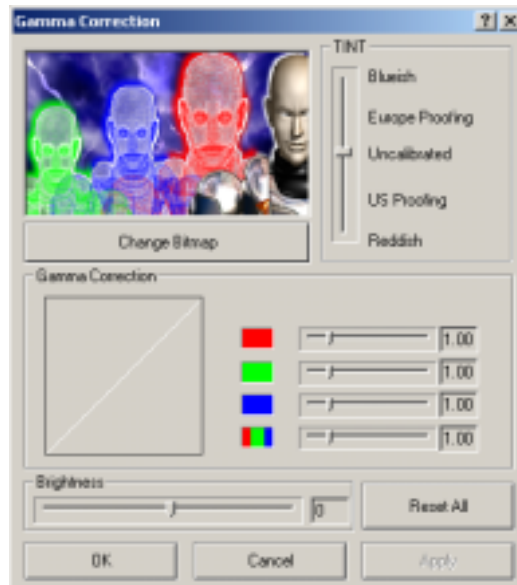
After you have restarted Windows, open the "Control Panel" and double click on the "Display" icon. From the "Display Properties" window, select the "Settings" tab and click on the "Advanced" tab to enter the "SiS 650/740 Properties" window.

You will notice four new entries have been made in the "Utility Manager" window: Gamma Correction, Video Setting, Driver Mode Setting and Product File Information.

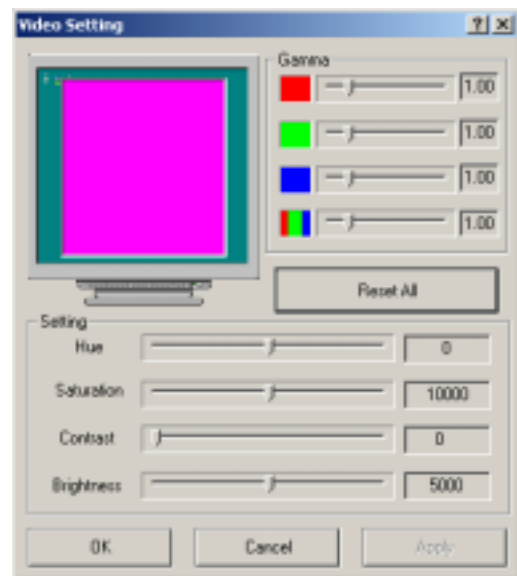


Gamma Correction

You can adjust the right color for your window screen by moving the "Tint" adjustment window. Adjust the "Brightness" to increase or decrease the right resolution for your screen display.



Video Setting



This dialog box has the following scroll bars and buttons for controlling the color components of the video image.

Brightness

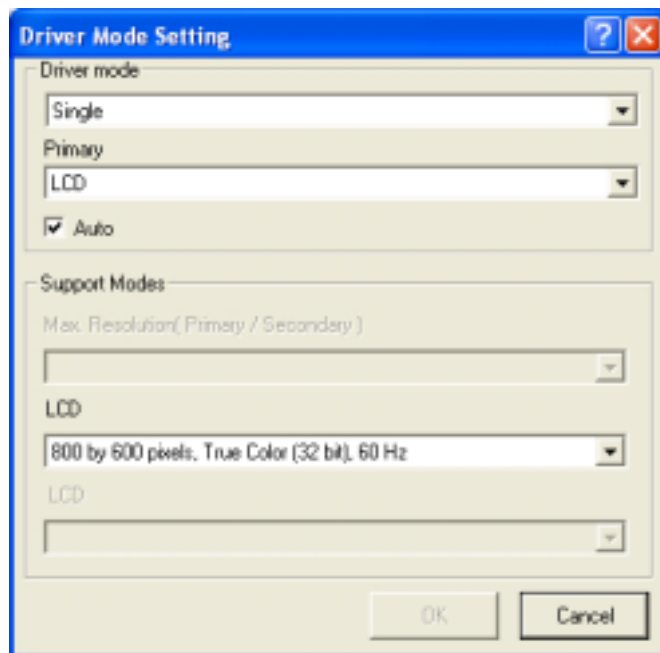
Use this scroll bar to adjust the overall intensity of light emitted by the video display.

Contrast

Use this scroll bar to adjust the contrast level between the bright and dark areas of the video image. The higher the contrast, the brighter the bright areas and the darker the dark areas, and vice versa.

Driver Mode Settings

The SiS's driver allows three simultaneous outputs to LCD, LCD/CRT and CRT. Before proceeding, be sure the monitor is connected to the DeskNote computer.



Driver Mode

This defines the two status of Single, Mirror and Multi Monitor (when an external monitor is connected to your DeskNote computer).

- When the "Single" is selected, the display can only be seen on the DeskNote LCD panel or external monitor.
- When the "Mirror" is selected, you can toggle between the LCD and CRT display. Both the LCD and CRT screen display the same image.

Display Combination

This applies to the display that you prefer to use. The options are VGA1 and LCD2.

REMINDER: The "Auto" tab will serve as an additional function of the "Mirror" and "VGA1" respectively by removing the ✓ check mark under the "Display Combination" selection field.

- Select the "VGA1" if you want the picture to only display on the monitor screen.
- Select "LCD2" if you want the picture to only display on the DeskNote screen.

NOTE: Use the [Fn] + [F12] hot keys to toggle between the LCD and external monitor display.

If you prefer to use only one display in operating your system, press the [Fn] + [F12] hot keys will shut down the LCD display, external monitor display or both at this random order.

Option 1: Single

This function will only show one single display whether it be on your Desknote or external monitor.

Option 2: Mirror (Simultaneous Display)

This function supports two asynchronous simultaneous display paths with the features of LCD, LCD/CRT or CRT).

1. Select the "VGA1" or "LCD2" tab by clicking on the button on "Primary" and "Secondary" to enable and connect the video display to the external CRT screen.
2. Click on the "Apply" tab and you will be asked to keep the new setting. The DeskNote and external monitor/TV screen will now simultaneously display the same image.

Option 3: Multi-Monitor (for Win XP)

"Multi-Monitor" is only applicable when the function of "Dual View" is being accessed. This function will only be available if an external monitor is connected to your DeskNote computer.

NOTE: This function is only applicable when you are using the Win XP operating system.

Chapter 6

Troubleshooting

This chapter describes locating and solving problems that you may encounter while using your computer.

Locating a Problem

Problems with your computer can be caused by something as minor as an unplugged power cord – or as major as a damaged hard disk. The information in this chapter is designed to help you find and solve minor problems. If you try all the suggested solutions and you still have a problem, make a list of what steps you have taken to correct the problem and contact your dealer.

Successful troubleshooting is the result of careful observation, deductive reasoning, and an organized approach to solving the problem.

The problems that you will encounter can be divided into two basic categories: hardware problems and software problems. Hardware problems can be further divided into electrical and mechanical problems. You will know you have a hardware problem if the screen is dark, the computer cannot read the disk drives, or you get an error message during the Power-On Self Test (POST).

Software errors can occur at several levels. The ROM BIOS and the operating system can give you a large number of error messages. On top of this, each application software package has its own set of error messages. It is important to determine whether the software error message you are getting is from the application or the operating system.

Once you know this, you can look in the respective manual for a solution to the

problem.

Checking Cables and Connections

Start by performing a careful visual inspection of the exterior of the computer. If no LEDs are illuminated, make sure that your computer and its peripherals are getting power and communicating with each other properly.

To check the power cables, and connections:

1. If you have been using UPS power, connect the DeskNote to an external power source and make sure that the UPS has a charge.
2. If you are using the DeskNote with the AC adapter, check the power outlet, the power cord, and any power switches that may affect your computer.
 - Check the wall outlet or power strip with an item that you know is functioning properly. A lamp or radio is a convenient item for checking the power. You may also need to check the fuses and breakers in your electric box.
 - If the outlet is controlled by a wall switch, make sure that the switch is on.
 - If the outlet is controlled by a dimmer switch, use a different outlet.
 - If your computer is plugged into a power strip with an On/Off switch, make sure the switch is on.
3. With the computer's power switched off, check all cable connections. If the computer is connected to any peripheral devices, look for loose or disconnected cables. If the computer is too close to a wall, a cable connection may be loose or the cables may be crimped.

NOTE: Do not substitute cables for different devices (other than the manufacturer recommended cables) even if they look exactly alike. The wiring inside the cable may be different.

4. When you are certain that you have power available and all connections are good, turn the computer on again. If the computer still does not start, you may have a hardware problem.

The Power-On Self Test

The Power-On Self Test (POST) runs every time you turn on or reset the DeskNote. The POST checks memory, the main system board, the display, the keyboard, the disk drives, and other installed options.

A few seconds after you turn on your computer, a copyright message appears on your display screen. A memory test message appears next; as the test continues, memory size increases until all installed memory is tested. Normally, the only test routine visible on the screen will be the memory test.

Two classifications of malfunctions can be detected during the POST:

- Error messages that indicate a failure either with the hardware, the software, or the *Basic Input/Output System* (BIOS). These *critical malfunctions* prevent the computer from operating at all or could cause incorrect and apparent results. An example of a critical error is microprocessor malfunction.
- Messages that furnish important information on the power-on and boot processes (such as memory status). These *non-critical malfunctions* are those that cause incorrect results that may not be readily apparent. An example of a non-critical error would be a memory chip failure.

In general, if the POST detects a system board failure (a critical error), the computer halts and generates a series of beeps. If failure is detected in an area other than the system board (such as the display, keyboard, or an adapter card) an error message is displayed on the screen and testing is stopped. It is important to remember that the POST does not test all areas of the computer, only those that allow it to be operational enough to run diagnostic programs.

If your system does not successfully complete the POST, but displays a blank screen, emits a series of beeps, or displays an error code, consult your dealer.

General Hardware Problems

A few common hardware problems and suggested solutions are presented in the table below:

Problem: Failure in the installation of the Audio driver.

-
- Solution:** Be sure to first remove the current audio device from your system. Please follow the instruction on the installation of audio driver.
- Problem:** The display screen is dark
- Solution:** Make sure that the computer is not in Suspend mode. Check the Brightness controls for the screen. If the controls are turned too far down, the screen will be dark.
- Problem:** An incorrect date and time are displayed.
- Solution:** Correct the date and time using the DOS DATE and TIME commands or the options in the Setup Utility. If the date and time become incorrect after a short time, your CMOS battery may be depleted. Contact your dealer.
- Problem:** The message: "Invalid system disk, Replace the disk, and then press any key" appears during boot.
- Solution:** Check and make sure that you do not have a non-bootable floppy diskette inserted in your floppy drive. If your FDD is empty, you may not have an operating system installed on your drive. Contact technical support for assistance.
- Problem:** You hear irregular beeps during operation of the DeskNote and the system halts.
- Solution:** The problem is beyond the scope of this manual. Contact technical support.
- Problem:** An unidentified message is displayed.
- Solution:** Reboot the computer and run the BIOS system setup. Confirm the Setup parameters. If the same message is displayed after booting up again, contact technical support for assistance.
- Problem:** The system cannot access the CD-ROM drive.
- Solution:** Check that a CD is properly inserted in the drive. Make sure that you are using the correct program for that kind of CD. For example, the system cannot read a data CD using an audio program.
- Problem:** You cannot operate the printer.
- Solution:** Check the printer cable connection. Ensure that the printer power switch is turned on. Confirm that the printer is on-line.
- Problem:** You can't save data to disk.

Solution: Ensure that the disk has been formatted.
Consult your operating system manual for information on formatting floppy diskettes.

The diskette is write-protected. Eject the diskette, remove the write protection, and try again.

The diskette is full. Try using another diskette or free up some space on the diskette.

The disk drive is not operating. Contact your dealer for support.

Problem: You cannot use the mouse.

- Check the cable connection.
- Check the mouse with another application to see if there is a software incompatibility problem.
- If possible, check the mouse with another computer to see if it works. If it doesn't operate on a different system, the mouse might be broken.

Contacting Your Dealer

If you still have a problem after reading the preceding sections, the next step is to contact your dealer. Your dealer can determine if the problem is something that requires the computer to be taken to the shop. Before you call your dealer, however, prepare the following information:

- How is your computer configured? Your dealer needs to know what peripheral devices you are using.
- What messages, if any, are on the screen?
- What software were you running at the time?
- What have you done already to try to solve the problem? If you have overlooked a step, your dealer may be able to solve the problem over the phone.

Appendix A

Specifications

Detailed Notebook Specifications

General

CPU

- Intel FC-PGA2 P4 series
1.4GHz/1.5GHz/1.6GHz/1.7GHz/1.8GHz/1.9GHz/2.0GHz CPU,
256KB L2 cache on die, CPU front-side bus 400MHz, 0.18u core
- Intel FC-PGA2 P4 series 2.0GHz/2.2GHz/2.26GHz/2.4GHz/2.5GHz
CPU, 512KB L2 cache on die, CPU front-side bus 400MHz, 0.13u core
- 478 pin mPGA478 socket

Memory

- 0MB on board, expandable up to 1GB with 512Mb technology
- 64/128/256/512MB memory options
- One 184 pin DDR RAM slot
- Supports 2.5V 200/266 MHz DDR RAM

Core Logic

- SiS650, SiS961
- 4X AGP bus interface
- Supports host bus at 400MHz
- 533MB/s high bandwidth MuTIOL between SiS650 and SiS961

-
- AGP v2.0 compliant
 - 3.3V PCI version 2.2 compliance
 - ACP v1.0b compliance
 - I/O APIC
 - Max. 266MB/s bandwidth hub interface to ICH2

Pointing Devices

- Synaptics TouchPad

Keyboard

- Keyboard controller: NS PC87591
- 12 function keys, Windows function keys
- 2 short-cut keys

Audio

- Built-in Chipset

Codec

- Winbond W83972D

Features

- Dual full-duplex Direct Sound Channels
- Hardware SoundBlaster Pro for real-mode DOS legacy compatibility
- 16-bit ADC & DAC resolution
- Support SPDIF out
- Supports 6 channels of AC'97 2.2 compliance audio for 5.1-channel Dolby Digital Material for DVD Movies
- PC2001 compliant

I/O Ports

- One parallel port supported EPP/ECP (25-pin female D-connector)
- One S-video TV out port for TV
- One DC input port for External AC adapter (3-pin DC jack)

-
- One video port for external analog VGA monitor (15-pin female D-connector)
 - USB 2.0 port x 4
 - MIC-in, headphone jack w/ adapter for 5.1 channel SPDIF support
 - RJ-11 jack for Fax/Modem
 - RJ-45 jack for LAN
 - IEEE 1394 mini-jack
 - FIR

LAN

- MAC: built-in SiS961
- PHY: Realtek RTL8201, Transformer: PULSE TS6121K
- IEEE 802.3 and IEEE 802.3x compliant
- Full duplex 10 Base-T, 100 Base-T Ethernet

IEEE 1394

- Controller: VIA VT6306
- 1394 OHCI v1.0 and v1.1 compliant
- Integrated IEEE 1394 OHCI-link and three ports of IEEE 1394 PHY
- Data transfer rate: 100/200/00 Mbit/s

USB2.0

- Controller: VIA VT1221
- Integrated two UHCI host controller cores for full-speed (12Mbits) USB device/low-speed (1.5Mbit/s) USB device and one EHCI host controller core for high-speed (480Mbit/s) device

FIR

- IrDA 1.3 standard compliant, up to 4.0Mbit/s

Mass Storage

HDD

- Support Enhanced IDE (PIO mode 4) and bus master (Ultra DMA 33/66/100 mode)

-
- Removable 2.5" 9.5mm HDD

CD-ROM/DVD-ROM (factory option)

- Built-in 5.25" standard 12.7mm CD-ROM/DVD-ROM/CD-RW/Combo (factory option)
- IDE interface CD-ROM/DVD-ROM/CD-RW/Combo Drive

Graphic and Video

Controller and features

- Built-in chipset, SiS315 graphic core

Features

- High performance 256bit 3D graphics engine, up to 143MHz 3D engine clock
- Supports Ultra-AGP II 2GB/s bandwidth, AGP 2.0 interface 4X
- Supports up to 2048x1536x32bit (true color) colors mode on external CRT @75MHz NI
- Supports 1600x1200x256K colors UXGA TFT LCD through external 2 channel LVDS transmitter

Graphic Memory

- Share Memory Architecture (SMA), supports 8MB/16MB/32/64MB frame buffer (user adjustable in BIOS)

LCD Display

- Supports 15.0" TFT SXGA+/15.0" TFT XGA/14.1" TFT XGA
- Models:

15.0" SXGA+ TFT	AU:	B150PN01
	AU:	B150PG01
	CPT:	CLAA150PA01
	CMO/IBM:	ITSX95C
	Hannstar:	HSD150PK11-A
15.0" XGA TFT	AU:	B150XG01
	LG:	LP150X2-A2M1
	Samsung:	LTN150XD-L02

	Hannstar: HDS150PX11-B
	Hydis: HT15X31-00
14.1" XGA TFT	AU: UB141X03
	CMO: N141X6-01

Electrical

AC Adapter

- Universal input - auto-sensing - 2 wire AC and 2 wire DC

DC-DC Converter

- Supplies 5V, 3.3V CORE VCC and IO VCC, +12V, MP5V
- Contains smart battery charger
- Charge modes
 - System on - 1.5 hours charge time
 - System off or in Suspend mode - 3.5 hours charge time

Mechanical

Dimension

- 332.0 mm (W) x 281.0 mm (D) x 39.7 mm/44.7mm (H)
- 13.07" (W) x 10.81" (D) x 1.56"/1.76" (H)

Weight

- 3.5 kg (7.7 lbs) with 15.0" panel and DVD-ROM drive installed

Operating Environment

Temperature

- Operating: 5°C ~ 35°C
- Storage: -20°C ~ 60°C

Humidity

- Operating: 30% ~ 90% (non-condensing)
- Non-operating: 10% ~ 90% (non-condensing)

Altitude

-
- Operating: -200 to 10,000 feet above sea level
 - Non-operating: -200 to 30,000 feet above sea level.

Options

- Memory extension card
- Factory option: CD-ROM/DVD-ROM/CD-RW/Combo (DVD-ROM+CD-RW) Drive

Software Specifications

System Software

- System BIOS: AMI BIOS
- Video BIOS: SiS 315 VGA BIOS
- Supported Operating Systems
 - Optional Windows XP RTM or above version
 - Optional Windows ME or above version
 - Optional Windows 2000 or above version
 - Optional Windows 98SE or above version
- Standard Software Drivers
 - VGA driver, audio driver, 1394 driver, touchpad driver, modem driver, LAN driver, USB 2.0 driver