

FlashMenu is an easy and convenient way of live-updating your BIOS. No more complicated procedures; a new BIOS update is only one click away. You can find FlashMenu on the installation CD-Title that came with your motherboard, or download it from our Web site.

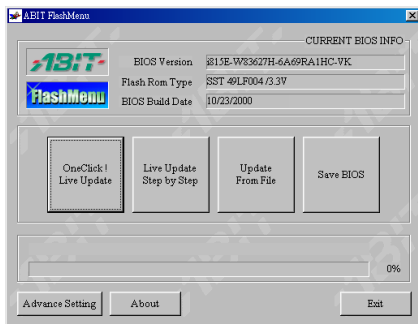
1. How do I Run the One-Click Live Update?

FlashMenu gives you an easy access to BIOS updating. One click is all you need to update the BIOS by using this method.

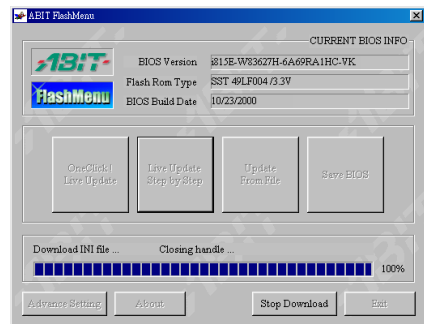
Note: Make sure to connect the Internet first.

Please refer to ABIT's Web site (www.abit.com.tw) for the "Support List" of what the models and BIOS versions the FlashMenu supports.

To enter the FlashMenu screen, go to "Start" → "Programs" → "ABIT" → "FlashMenu", and click the execution file "FlashMenu". The FlashMenu main screen pops up. Here you can see your current BIOS information:

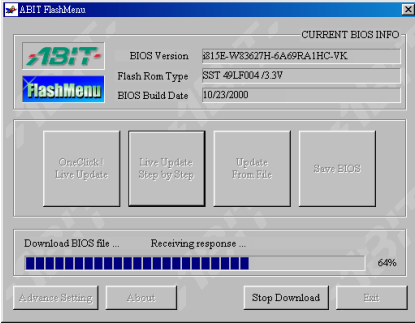


1. Click the "OneClick! Live Update" button.

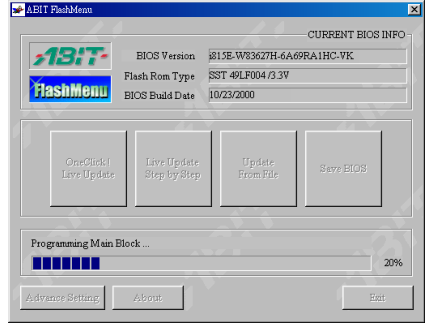


2. The "BIOS.INI" information file will first be downloaded to your computer, and then FlashMenu will compare your motherboard's BIOS.INI with the one from the Web site.

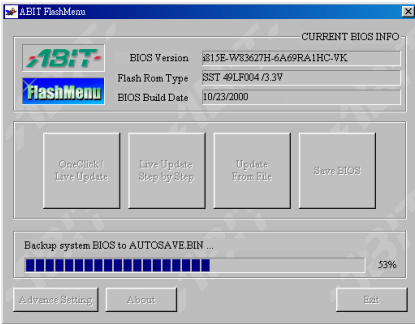
The download procedure will only begin when there is a newer BIOS than the one on your motherboard.



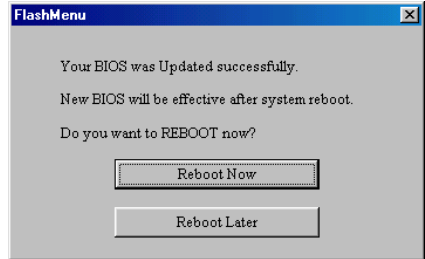
3. FlashMenu is now downloading the latest BIOS for your motherboard.



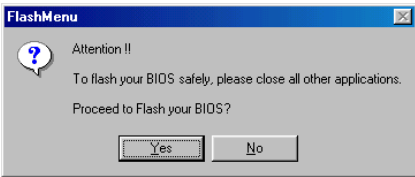
6. The BIOS is being updated.



4. The older BIOS will be saved automatically to C:\ as "autosave.bin".



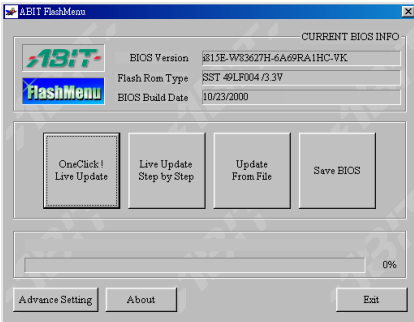
7. Now your BIOS has been updated successfully. Click "Reboot Now" to reboot your system.



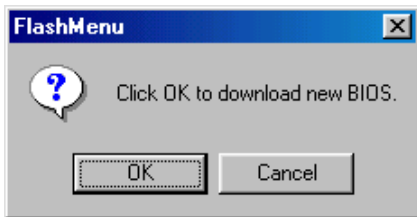
5. Close all other applications first, and then click the "Yes" button once you are ready to update your BIOS.

2. How do I Run the Step-by-Step Live Update?

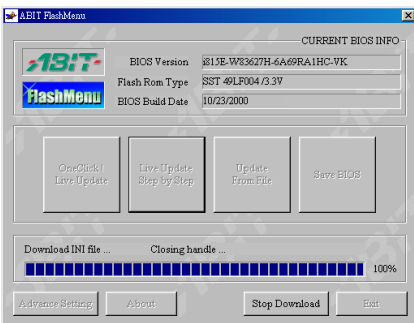
Please follow the on-screen instructions to run step-by-step live update.



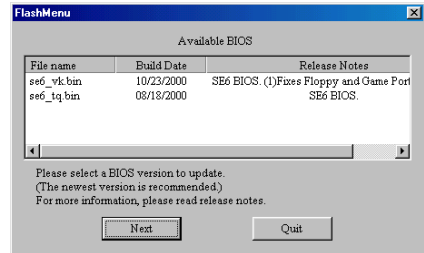
1. Click the “Step by Step Live Update” button.



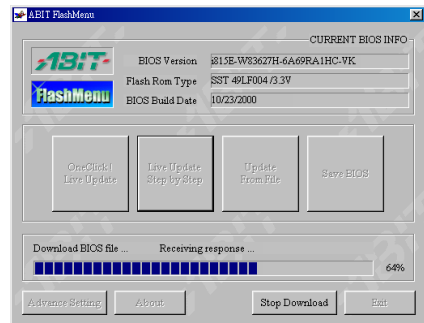
2. FlashMenu is now ready to download the new BIOS information file. Click “Yes” button to continue.



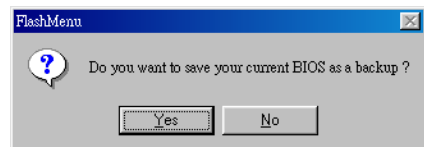
3. The BIOS information file is now being downloaded.



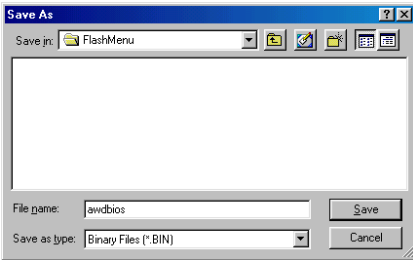
4. Select the BIOS version you want (we recommended that you select the most recent), and then click the “Next” button to continue.



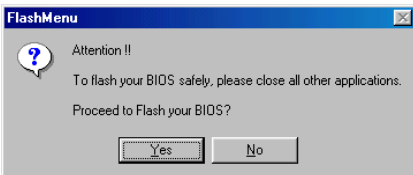
5. The selected BIOS is now being downloaded.



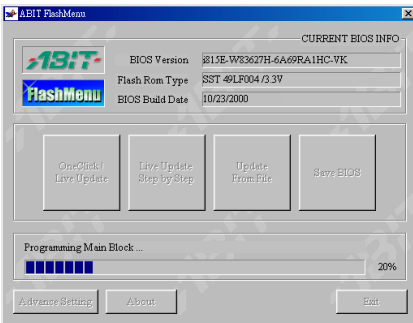
6. Click “Yes” to save your current BIOS file as a backup.



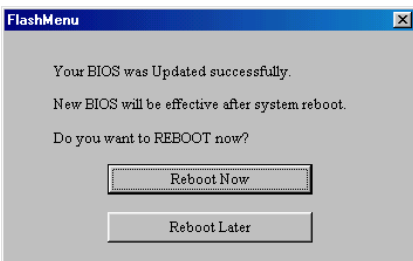
7. Select the path to save your current BIOS.



8. Close all other applications first, and then click the “Yes” button once you are ready to update your BIOS.

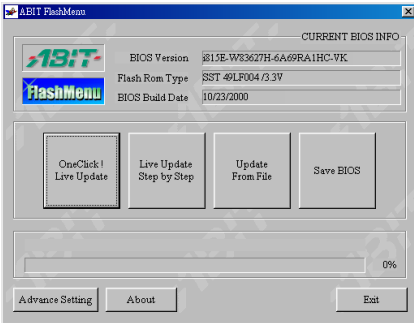


9. The BIOS is now being updated.

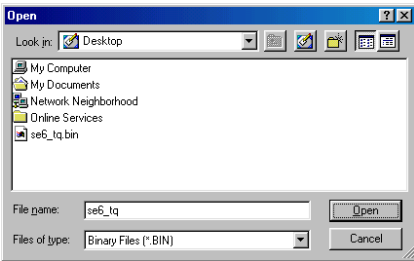


10. Now your BIOS is updated successfully. Click “Reboot Now” to reboot your system.

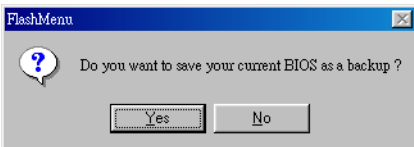
3. How do I Update From File?



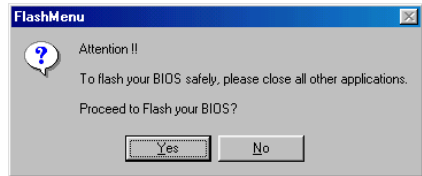
1. Click on the **“Update From File”** button.



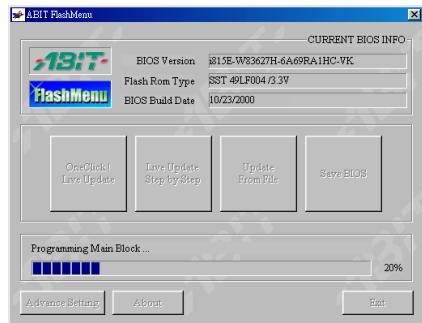
2. FlashMenu will ask you the location of the file you want to update.



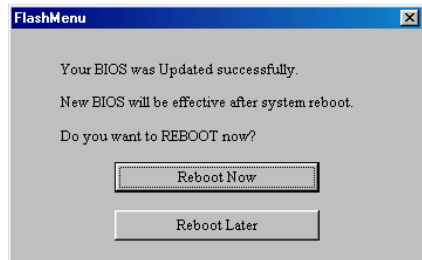
3. Click the **“Yes”** button to save your current BIOS as a backup.



4. Close all other applications first, and then click the **“Yes”** button once you are ready to update your BIOS.

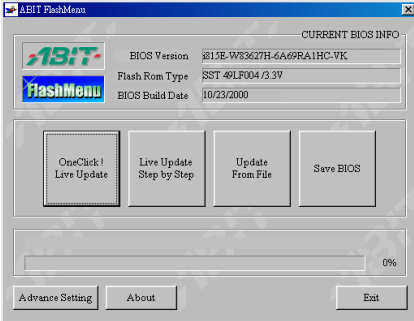


5. The BIOS is now being updated.

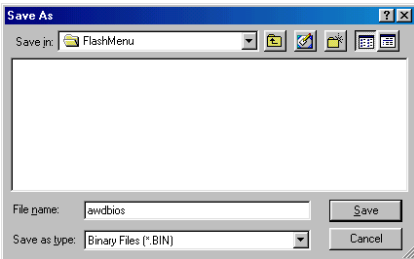


6. Your BIOS has been updated successfully. Click **“Reboot Now”** to reboot your system.

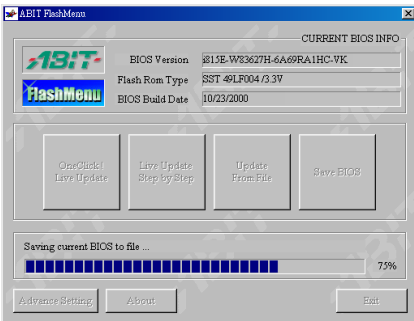
4. How do I Save the BIOS File?



1. Click the “Save BIOS” button.

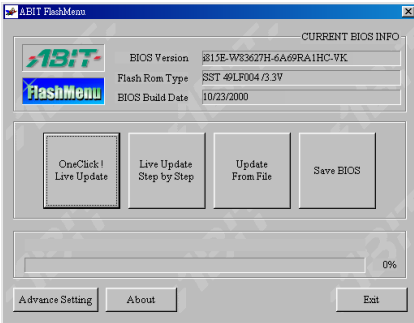


2. Choose a new location to save the BIOS file under a different name.

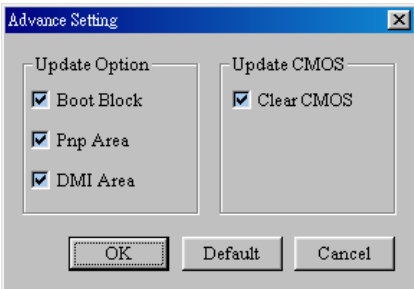


3. The current BIOS is being saved.

5. How do I Configure the Advance Setting?



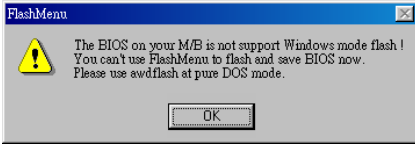
1. Click the “Advance Setting” button.



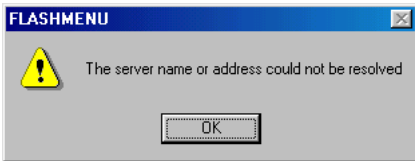
2. Click the check box for the option you want. Click “Default” for default configuration. Click “OK” to exit.

6. Error Messages

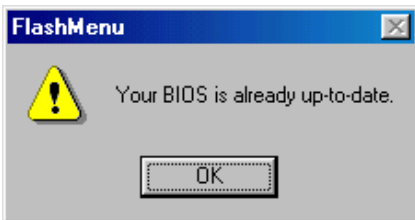
These screen shots pop up when errors occur.



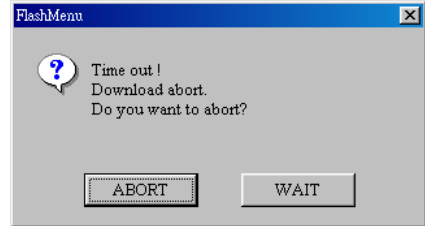
1. This screen pops up when the BIOS on your motherboard does not support Windows mode flash. You may have to update your BIOS with the Awardflash program in the pure DOS environment.



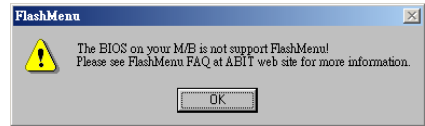
2. This screen pops up when a faulty connection to ABIT's Web site has occurred. Please check your Internet connection and try again later.



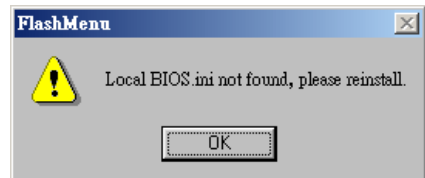
3. This screen pops up when the BIOS on your motherboard is already up-to-date. There is no need to update the BIOS.



4. This screen pops up when there is no activity for 60 seconds. You may click "**ABORT**" to cancel or click "**WAIT**" to wait for another 60 seconds.



5. Your BIOS version is too old or not supported by FlashMenu. Get on the Web to check if your motherboard is supported or not. If yes, run the steps 1 to steps 3 in the section of "Step-by-Step Live Update" to update the "BIOS.ini" file.



6. FlashMenu cannot find the "BIOS.ini" file. Run the steps 1 to steps 3 in the section of "Step-by-Step Live Update" to update the "BIOS.ini" file, or to reinstall the FlashMenu.